



Constellation Schools

Westpark Community Elementary

Financial Report for Fiscal Year 2011

The Cash Basis Report of Revenues and Expenditures for the Year ended June 30, 2011 reflects the activities of Constellation Schools: Westpark Community Elementary during the year. The information provided below refers to this report and the accompanying graphs.

Highlights for the Year: ✓9th annual audit issued for 2010 with an "unqualified opinion" (best opinion available)

Revenues

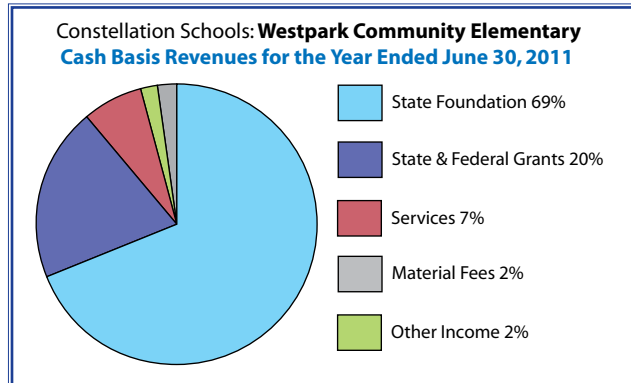
The largest source of operating revenue (69%) comes from the State of Ohio School Foundation Program. This funding is earned at a base rate of \$5,703 for each student enrolled during the year. Additional funds are provided for the special needs of students, the poverty level of the community in which each student resides, and other adjustments.

State and Federal Grants (20%) supplement school operations for specific purposes. The school received grants for Title I Intervention, Professional Development, Technology, Special Education, Child Nutrition Services, State Fiscal Stabilization Funds, American Recovery and Reinvestment Act, Race to the Top, Education Jobs, Statistical Reporting (EMIS) and Electronic Communications.

Materials Fees (2%) are collected from each student to provide consumable materials used during the year.

Services (7%) were provided to Constellation Schools: Westpark Community Middle for shared space and staff.

Other income (2%) includes interest earned on bank account activity, contributions and donations, lunch collections and other miscellaneous items.



| Constellation Schools: Westpark Community Elementary | |
|--|---------------------|
| Cash Basis Statement of Revenues and Expenditures for the Year ended June 30, 2011 (Unaudited) | |
| Beginning Cash - July 1, 2010 | \$ 1,344,141 |
| Revenues | |
| State Foundation | \$ 2,059,889 |
| State & Federal Grants | \$ 611,518 |
| Material Fees | \$ 62,608 |
| Services | \$ 202,500 |
| Other Income | \$ 60,240 |
| Total Revenue | \$ 2,996,755 |
| Expenditures | |
| Personnel | \$ 1,093,182 |
| Retirement & Benefits | \$ 315,743 |
| Purchased Services | \$ 1,328,806 |
| Supplies & Materials | \$ 138,558 |
| Capital Outlay | \$ 46,112 |
| Other | \$ 39,887 |
| Total Expenditures | \$ 2,962,288 |
| Ending Cash - June 30, 2011 | \$ 1,378,608 |

Additional Information

A more detailed set of financial statements may be obtained by calling (216) 712-7600, writing to the Treasurer, Constellation Schools 5730 Broadview Road, Parma, Ohio 44134 or by e-mail at the following address: babb.thomas@constellationschools.com

During the fall of 2011 an audit of the school's financial records for the year ended June 30, 2011 will be completed. The audit report should be available during the winter at the above address and on the Auditor of State's website: www.auditor.state.oh.us

Expenditures

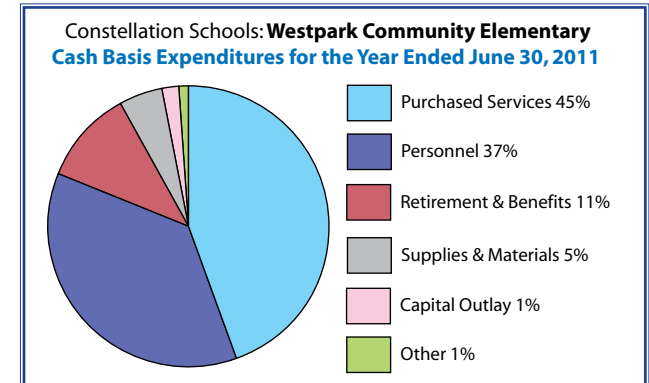
Personnel services, combined with retirement and benefits, accounted for 48% of the expenditures for the year. These expenditures include principal, support staff, teachers, state retirement systems, employment taxes and health insurances.

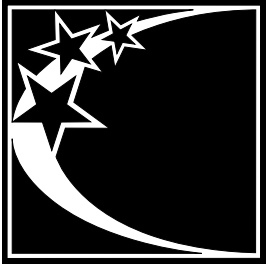
Purchased services (45%) include expenditures for student support services (speech, psychologist, health, physical therapy and occupational therapy), field trips, professional development, management services, sponsor services, test scoring, data reporting, facility lease and operations, equipment leases, telephone, postage, travel, marketing, printing, food services and other services.

Supplies and materials (5%) include textbooks, instructional supplies, testing materials, office supplies, medical supplies, instructional software and maintenance supplies.

Capital Outlay (1%) includes purchases of equipment, furniture and building renovations.

Other (1%) includes audit fees, insurances (property, liability, fidelity bond, directors & officers), dues and subscriptions and other miscellaneous.





Mission, Vision, Value Statements & Slogans

Mission

Constellation Schools creates and provides diverse superior educational opportunities for a community of learners, built on a foundation of character education in a safe environment, ensuring the success and wellness of all children in our advancing technological society.



Value

As a school of choice, we believe all children deserve a superior education in a safe, caring, nurturing environment. **We** will create a community of learners where children excel, become responsible citizens, and are exposed to the highest ethical standards.

Organization Slogan

*The Right Choice for Parents
and a Real Chance for Children!*

Vision

Constellation Schools will create a premier learning community characterized by high expectations and academic excellence.

Our students will be actively engaged in the process of learning and will become responsible involved citizens. They will be life long learners, technologically proficient and perform to their maximum potential.

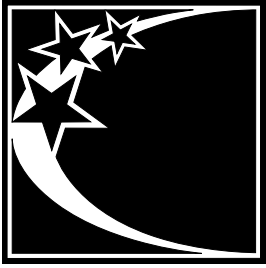
Our personnel will be committed, competent, compassionate individuals who will consistently exemplify the highest ethical and professional standards.

Our management team will provide superior leadership, resources, and support to facilitate the optimal operations of our school.

Our Board of Directors will guide the organization in creating a culture of excellence and success.

Character Education Slogan

*Remember
We all have Choices.
Choices have Consequences.
Be Smart and Make the Right Choice!*



Constellation Schools & Its History

Constellation Schools LLC was established to create and operate high quality community (charter) schools by offering a superior, safe learning environment. Currently there are seventeen (17) Constellation Schools in Northeast Ohio.

Constellation Schools offer families a real choice for their children to receive a high-quality education. Our schools are privately operated public charter schools of choice. An education at Constellation starts during the early years of kindergarten, where we begin to prepare students to become successful, well-rounded, life-long learners by developing their academic foundation and providing them with the tools to be successful in their future endeavors. Our learning communities are characterized by small classes, high expectations, involved parents, and engaged students. We provide safe and secure buildings; the best available curriculum; current textbooks; and, extensive use of computers and other technology. Character education is the cornerstone of our program. Students are expected to adhere to a demanding code of behavioral conduct, including a dress code, and are held accountable for their actions through a comprehensive and strict disciplinary policy. Constellation Schools hires only highly qualified, state-certified/licensed teachers and provides extensive and on-going professional development for all personnel.

In addition, our schools offer parents a real opportunity to be involved in the education of their child by creating a learning community where teachers, parents and students work together to ensure academic success for all students. Parents are expected to be active participants in the education of their children, support the schools policies, supervise homework and attend conferences.

Constellation Schools Grades K-4

Old Brooklyn Community Elementary (1998)

Cherie Kaiser, Principal

4430 State Road, Cleveland, Ohio 44109

216.661.7888 • 216.661.5975 fax

Westpark Community Elementary (2001)

Alice Weeks, Principal

16210 Lorain, Cleveland, Ohio 44111

216.688.0271 • 216.688.0273 fax

Lorain Community Elementary (2001)

Melisa Shady, Principal

201 West Erie Avenue, Lorain, Ohio 44052

440.204.2130 • 440.204.2134 fax

Puritas Community Elementary (2003)

Meg Paulus, Principal

15204 Puritas Avenue, Cleveland, Ohio 44135

216.688.0680 • 216.688.0609 fax

Constellation Schools Grades K-3

Mansfield Community Elementary (2002)

Bethany Scott, Principal

215 North Trimble Road, Mansfield, Ohio 44906

419.522.4578 • 419.522.0045 fax

Constellation Schools Grades K-6

Elyria Community Elementary (2001)

Tracey Frierson, Principal

300 North Abbe Road, Elyria, Ohio 44035

440.366.5225 • 440.366.6280 fax

Westside Community School of the Arts (2007)

Deborah Kilbane, Principal

3727 Bosworth, Cleveland, Ohio 44111

216.688.1900 • 216.688.1902 fax

Stockyard Community Elementary (2004)

Amber Edmisten, Principal

3200 West 65th Street, Cleveland, Ohio 44102

216.651.5143 • 216.651.9515 fax

Constellation Schools Grades K-8

Madison Community Elementary (2004)

Melissa Rice, Principal

2015 West 95th Street, Cleveland, Ohio 44102

216.651.5212 • 216.651.9040 fax

Constellation Schools Grades 7-8

Stockyard Community Middle (2010)

Gregory Cek, Principal

3200 West 65th Street, Cleveland, Ohio 44102

216.651.5143 • 216.651.9515 fax

Constellation Schools Grades 4-6

Mansfield Community Middle (2009)

Bethany Scott, Principal

455 Park Avenue West, Mansfield, Ohio 44906

419.522.3563 • 419.522.2705 fax

Constellation Schools Grades 5-8

Old Brooklyn Community Middle (2006)

Amy Mobley, Principal

4430 State Road, Cleveland, Ohio 44109

216.351.0280 • 216.661.5975 fax

Westpark Community Middle (2006)

Karil Sako, Principal

16210 Lorain, Cleveland, Ohio 44111

216.251.7200 • 216.251.0355 fax

Puritas Community Middle (2006)

Donald Disantis, Principal

15204 Puritas Avenue, Cleveland, Ohio 44135

216.251.1596 • 216.251.3540 fax

Lorain Community Middle (2006)

Debbie Thoren, Principal

307 West 7th Street, Lorain, Ohio 44052

440.242.2023 • 440.244.0857 fax

Constellation Schools Grades K-12

Parma Community (2000)

Linda Geyer, Principal

Elementary

7667 Day Drive, Parma, Ohio 44129

440.888.5490 • 440.888.5890 fax

Middle and High

5983 West 54th Street, Parma, Ohio 44129

440.845.2587 • 440.845.2834 fax

Outreach Academy (2006)

Mary Wideman, Principal

3727 Bosworth, Cleveland, Ohio 44111

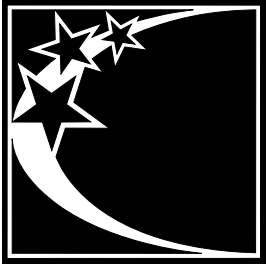
216.688.1244 • 330.732.2497 fax

Constellation Schools LLC

Administrative Office

5730 Broadview Road, Parma, Ohio 44134

216.712.7600 • 216.712.7601 fax



Chairman's Message

Constellation community schools continue to accomplish outstanding achievements as a result of the dedicated people who put the children's needs first and do their best every day to ensure every student has an opportunity to be successful. Preliminary results from the Ohio Department of Education indicate that our schools will make up the majority of Ohio community schools rated "Excellent" and "Effective" and that our schools continue to improve with every year.

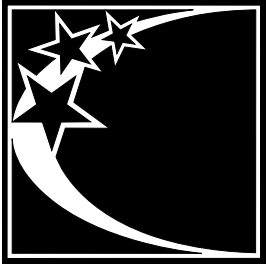
As our schools and organization grow, we are working hard to maintain the principles that have gotten us to where we are: safe, pleasant classrooms and schools which emphasize respect and responsibility; highly qualified and compassionate teachers and staff focused on bringing out the best in every child; and administrators responsive to the needs of the families we serve. We believe strongly that every child deserves a great teacher and we are continuing to provide collaboration and professional development opportunities that give our teachers the necessary tools and resources they need to reach their full potential as educators.

Parent support and involvement remain important to our school communities. The role parents play in the education of their children should not be underestimated. Involved, active parents ensure that students will be engaged in their education. When parents take an interest in what's going on at school, children are better behaved and better students. Throughout Constellation we are fortunate to have the support of concerned parents. We thank our involved parents for their dedication throughout the years.

Although finding appropriate buildings for some of our schools remains a major challenge, we continue our search for buildings while undertaking several additional expansion projects to our current schools to meet the growth demands. We have completed the purchase of a former Lorain City School District Building which will be the future home of our Lorain Community Elementary and Middle; we are adding classrooms to our Madison school, and we are renovating additional space for our Stockyard Community Middle School. In addition, we plan to open two new schools for the 2011/2012 school year.

In June 2011, we proudly watched our first graduating class from our Parma Community High School, and the growth and success of this school continues to be a source of great pride. Now in its fifth year, we are excited to see the number of students wanting to enroll in our school.

The performance of students attending our schools once again proves that Constellation's community schools are:
The Right Choice for Parents and a Real Chance for Children.



Directors & Administrative Staff

Gerald Preseren
Executive Director

Elizabeth Long
Receptionist

Thomas Babb
Treasurer

Jean Sandler
Accountant

Dee Crawford
Edie Myhre
Administrative Assistants-Finance

Susan Knurek
Administrative Assistant-Finance p.t.

Marilyn Kehn
Payroll p.t.

Rebecca Novak
EMIS Manager

David Calco
Technology Coordinator

Gary Schaefer
Lisa Geyer
Randall Kufel
Shawnda Thombs
Lou Videc
David Colon
Technology Specialists

Pamela Goswick
Coordinator of Educational Programs

Roy Zeman
Coordinator of Educational Services

Becky Jordan
Heather Zeman
Jamie Parker
Kevin Panek
Jillian Lukich
School Psychologists

Amanda Cell
Jill Teresczuk
Jillian Zak
Speech & Language Pathologists

Frances Horvath
Karen Boose
Occupational Therapists

Kimberly Stanislo
Supervisor of Health Services

Malinda Miller
Lisa Stern
Julia Howerton
Kelley Vazquez
Elizabeth Clause
Kristen Johnson
Diane Sauder
Rochelle Kirby
Albert Krosse
School Nurses

April Gunderman
Manager of Special Education

Sharon Morgan
Coordinator of Staff & Professional Development

Marybeth Oko
Administrative Assistant

Sheila Woidke
Adrienne Dancsok
Megan Lange
Shelly Wohl
Erin Towne
Kelly Koehler
Laura Horvath
Teacher Coach

Brian Belmont
Thomas Flood
Leadership Trainees

Jeffrey Soltis
Facility Operations Manger

John Allen
Brian Preseren
Maintenance

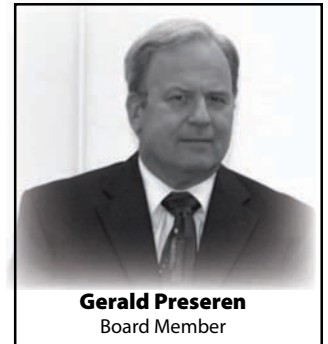
Karen Florian
Human Resource Manager

Amy Spears
Administrative Assistant

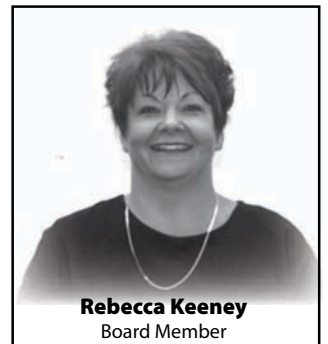
Lisa Vinarcik
Manager of Marketing & Public Relations



Richard Lukich
Board Chairman



Gerald Preseren
Board Member

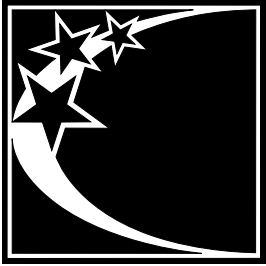


Rebecca Keeney
Board Member

Constellation Schools: Westpark Community Elementary

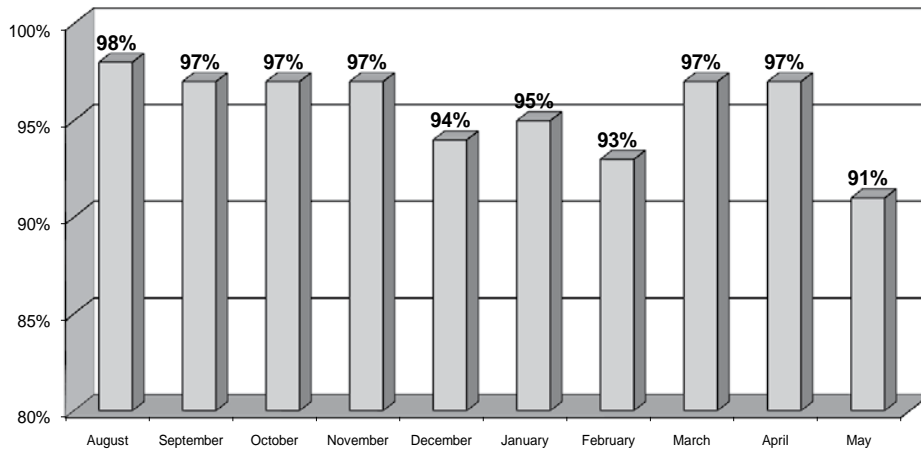
Sponsor: James George, *Director of Community Schools*

Lucas County Educational Service Center - Collingwood Center - 2275 Collingwood Road - Toledo, Ohio 43624 - 419.295.4150



Westpark Community Elementary Staff & Board

2010-2011 Staff Monthly Attendance Percentage



Westpark Community Elementary Staff

Principal

Alice Weeks

Admin. Assistants

Patricia Knaggs
Judy Sylvester

Kindergarten

Danielle Gearhart
Theresa Klobusnik
Suzannah Skinner

1st Grade

Sarah Mooney
Tina Parente
Brianna Smith

2nd Grade

Diane Dougherty
Christine Grovu
Kimberly Scott

3rd Grade

Heather Campbell
Jennifer Dukarm
Kelly Stout

4th Grade

Jennifer Koeth
Sharon Moore
Rebecca Trendell

Music

Valerie Niese

Phys Ed

Cathy Schneider

Title 1

Diane Boehnlein
Ademetria Lett-Martin
Kathryn Norris
Georgeta Serban
Carolyn Smith

Bldg. Sub

Erica Kovacs
Rebecca Knaggs

Special Education

Amanda Lenetz
Cara Meadows

Aide

Guy Dagata
Amy Gonos
Jodi May
Danette Wolodzko

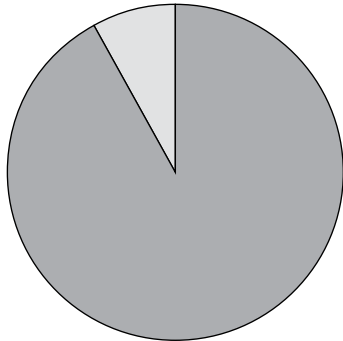
Food Service

Lois Cagney
Beth Hartman

Cleaner

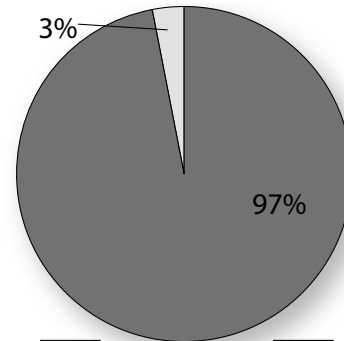
Sherrie Gibbs
Cyril Sako

Staff Demographics



- Asian 0%
- African American 8%
- Hispanic 0%
- American Indian/Alaskan Native 0%
- Multiracial 0%
- Native Hawaiian/Pacific Islander 0%
- Caucasian 92%
- Other 0%

Staff Gender



- Male 3%
- Female 97%

Westpark Community Elementary Board Members

President:

Bruce Szczepinski

Melisa Shady

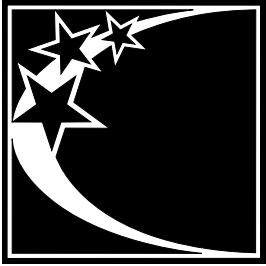
Linda Skupski

Holly Morley

Amy Mobley

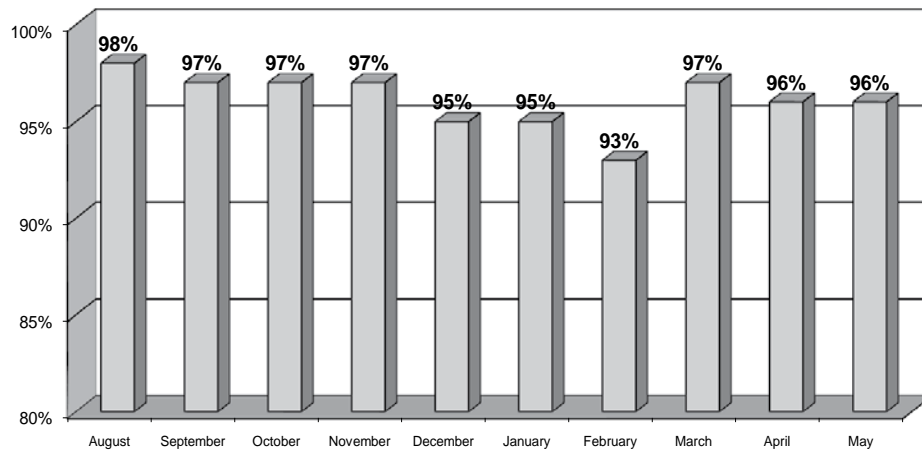
Bridget Gorbett

Sheila Delzani



Student Enrollment, Attendance & Demographics

2010-2011 Student Monthly Attendance Percentage



About Our Students

Students at Westpark Community Elementary are enrolled on a first come, first served basis during the first two weeks of December. Those students who are currently enrolled are ensured a place for the following school year if they enroll during these two weeks. If more students apply than there are spots, a lottery is held and a waiting list is formed.

Student per Class/Teacher Ratio for the 2010-2011

20 Students : 1 Teacher

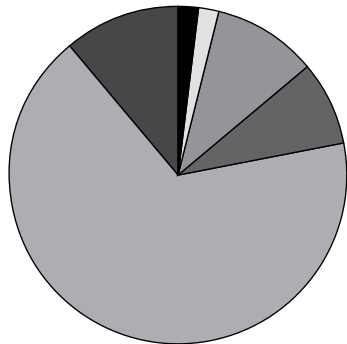
287 Students Enrolled

57% Eligible for Low Income

Demographics

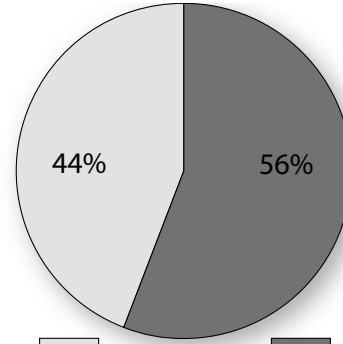
- 2% Asian
- 2% African American
- 0% American Indian/Alaskan Native
- 67% Caucasian
- 10% Hispanic
- 8% Multiracial
- 0% Native Hawaiian/Pacific Islander
- 11% Other

Student Demographics



- Asian 2%
- African American 2%
- Hispanic 10%
- American Indian/Alaskan Native 0%
- Multiracial 8%
- Native Hawaiian/Pacific Islander 0%
- Caucasian 67%
- Other 11%

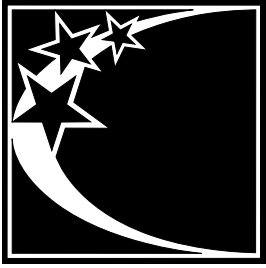
Student Gender



Male 44% Female 56%

Home School Notification

The school is a public school and students enrolled in and attending the school are required to take achievement tests and other examinations prescribed by law. In addition, there may be other requirements for students at the school that are prescribed by law. Students who have been excused from the compulsory attendance law for the purpose of home education as defined by the Administrative code shall no longer be excused for that purpose upon their enrollment in a community school.



Educational Plans/Programs

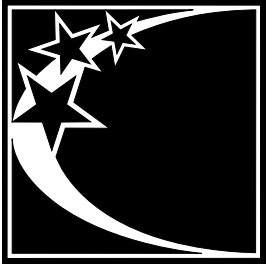
Our curriculum is aligned with the Ohio Academic Content Standards and is designed to guide students toward their grade level goals. Content areas include: reading/language arts, spelling/phonics, math, science, social studies, music, physical education/health, computers and Spanish. During the 2010-2011 academic year, all Constellation Schools utilized the Ohio Academic Content Standards to prepare our students for the Ohio Achievement Assessments in Grades 3-8 and the Ohio Graduation Test in Grade 10. With the state's adoption of the Common Core Standards in English language arts and math and newly revised science and social studies standards, teachers are preparing to make the necessary adjustments to our current curriculum in an effort stay aligned with the state standards.

Title 1 services (small grouping with a reading/math teacher) and Special Education Services are implemented to assist students who qualify for special services. Numerous online programs are utilized as part of our Response to Intervention program in an effort to move children through the intervention pyramid. Furthermore, classroom instruction is enhanced through the use of technology in our computer labs, integrating classroom projects with such programs as word processing, power point presentations and internet research. Many of our classrooms are utilizing Smart Board Education and all of our schools are utilizing the latest in technology innovations.

Teachers establish high academic measures for achievement and behavior in their classrooms. Through age appropriate teaching methods, all students will reach or exceed their maximum potential. The cornerstone of our academic program is our strong emphasis on Character Education. Character Education permeates throughout our curriculum. All of our classrooms and hallways have a variety of posters and bulletin boards that define acceptable character. Good behavior and appropriate manners from everyone is a constant expectation of our students and staff. Character Education enhances our educational plan while securing a safe and nurturing learning environment for all of our students.

Students were able to highlight their talents and skills with assorted programming throughout the year. The All Constellation Play, "Sly, the Fly and the Evil Guy" was presented in November for students with the dramatic talent. The All Constellation Spelling Bee brought together the top spellers from each school in December. In January, the All Constellation Science Fair provided students with the opportunity to share various science projects and compete for the chance to win a family membership to the Great Lakes Science Center. Finally, the All Constellation Band Festival and Art Show in April provided our students studying instrumental music and our outstanding artists the chance to display their talents. After school clubs are offered in a variety of our schools addressing such interests as: drama, basketball, comic books, reading and homework. All of these programs are organized and facilitated by staff who go above and beyond to provide our students with a well-rounded education rich with opportunities.





Professional Development

Constellation Schools are committed to quality professional development. Our Local Professional Development Committee (LPDC) follows all state requirements to renew teaching/principal certificates and licensures. Our professional renewal process ensures a close connection between renewal activities of the educators and classroom practices. The continued development and improvement of relevant and applicable professional pedagogical skills and knowledge are essential to the education process. Through professional development we can ensure that all students reach their full potential to contribute to a democratic society including maximizing each student's abilities and encouraging self-reflection and a lifelong love of learning.

Several professional development opportunities before the start of the school year were provided such as:

- Classroom Management
- Character Education in the Classroom
- Differentiated Instruction
- Progress book
- Teaching Strategies
- Special Education Procedures
- Technology in the Classroom
- Curriculum

Professional Development Coaches

The Professional Development Coach positions provide a framework of support, professional development, and standards based assessments and evaluations for all teachers. The coaches create an atmosphere for collaboration and teamwork in helping achieve the goals and objectives of each individual teacher.

Constellation Schools provided teachers with an opportunity to choose various professional development workshops to enhance their own professional growth. Such opportunities included:

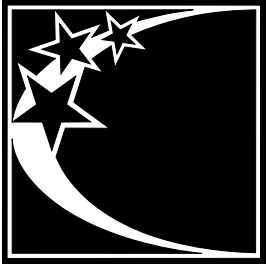
- Grade Level Conferences
- Title One Conference
- Middle School Conferences
- Improving Reading and Math Instruction Workshops
- Smart board Training
- Reading Plus
- Study Island
- Technology Conferences

Entry Year Teacher Program

A full year program was provided to all entry year teachers. This program offered monthly meetings, support, and information that enhanced the first year teacher's experience. Teacher Development Coaches were added to schools to work with entry year teachers throughout the school year. The coaches were available to the entry year teachers to serve as their mentors within the school day. This full year experience with a mentor provided the support needed as well as provided for individual needs for every first year teacher.

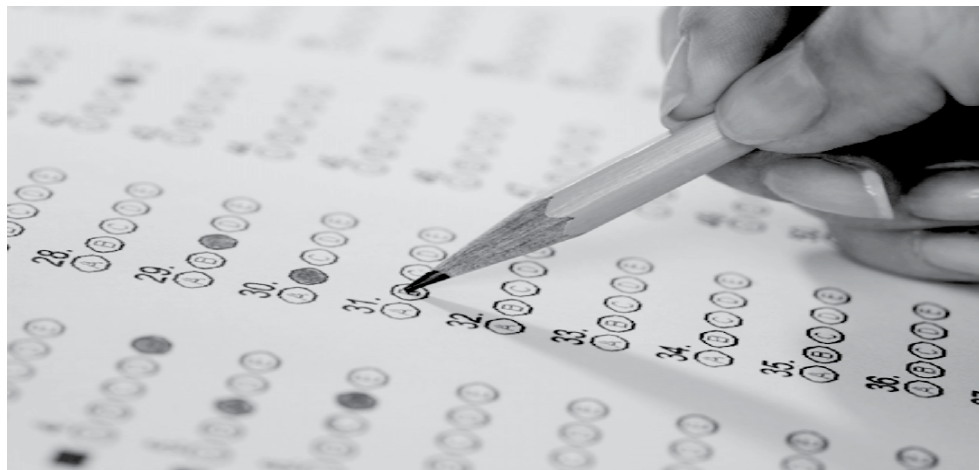
Leadership Training Program

The leadership training program is a one year intern program that provides an intense hands-on experience for highly qualified, successful teachers who wish to become leaders. The professional development internship is on going, highly focused, and designed to meet the individual needs of each intern.



OAA - Ohio Achievement Assessments

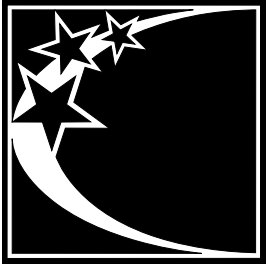
| STATE INDICATORS | | PERCENTAGE OF STUDENTS AT AND ABOVE THE PROFICIENT LEVEL |
|------------------------------|--|--|
| | | Constellation Schools: Westpark Community Elementary |
| 3rd Grade Achievement | | <i>The state requirement is 75 percent</i> |
| Reading | | 75.8 |
| Mathematics | | 80.6 |
| 4th Grade Achievement | | <i>The state requirement is 75 percent</i> |
| Reading | | 88.9 |
| Mathematics | | 75.9 |



PERFORMANCE INDEX SCORE

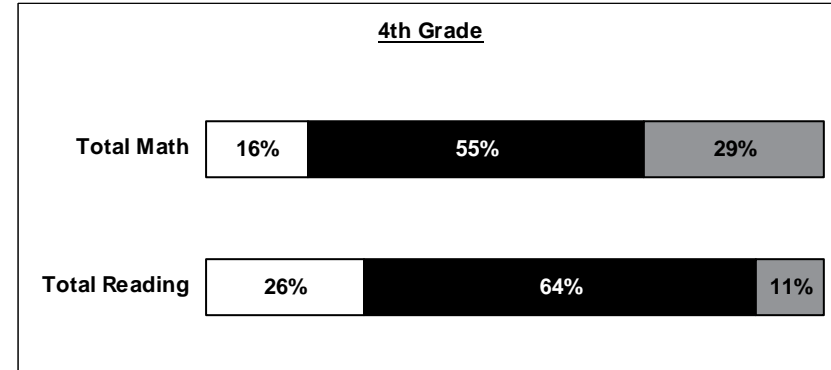
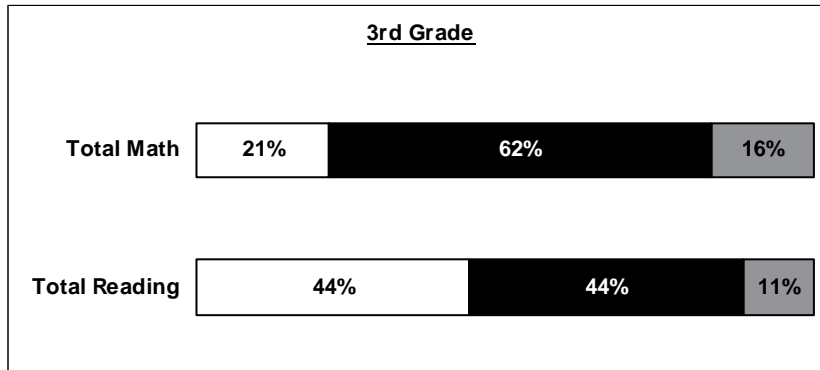
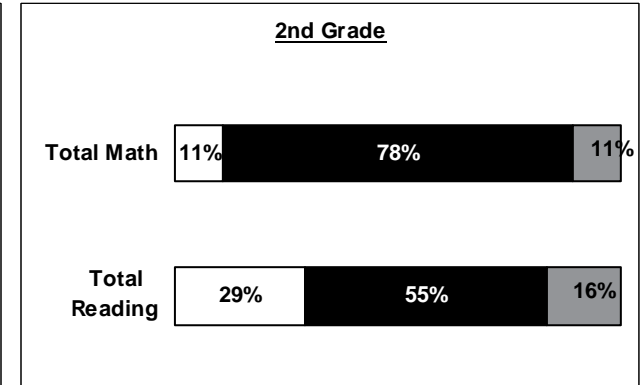
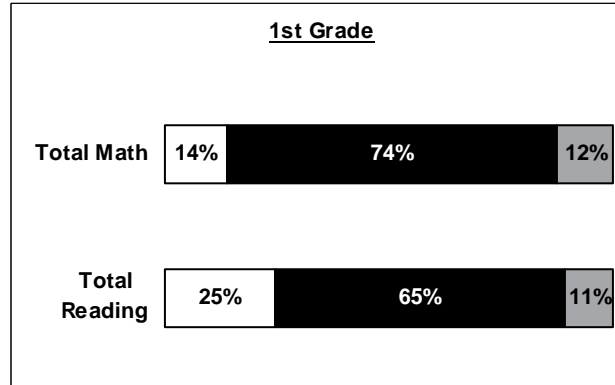
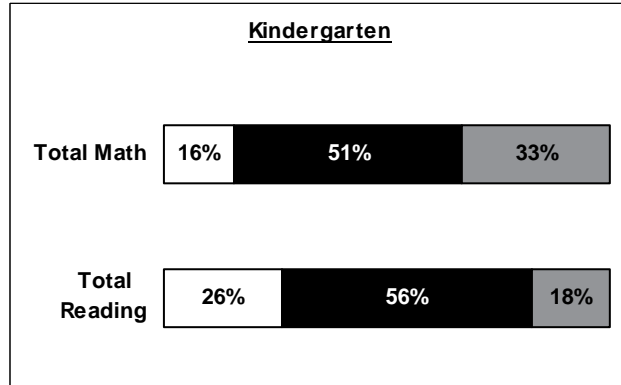
The Performance Index Score reflects the achievement of every tested student. The score is a weighted average of all tested subjects in grades 3-8 and 10. The most weight is given to the advanced students (1.2), and the weights decrease for each performance level. This creates a scale of 0 to 120 points, with 100 being the goal. Looking at the Performance Index Score over time shows trends in school achievement.

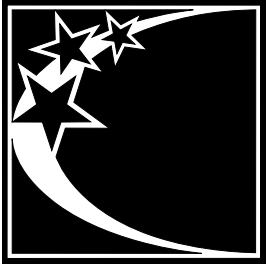
| Performance Index Score Over Time | 2010-2011 | 2009-2010 | 2008-2009 |
|-----------------------------------|-----------|-----------|-----------|
| | 97.6 | 95.4 | 98.2 |



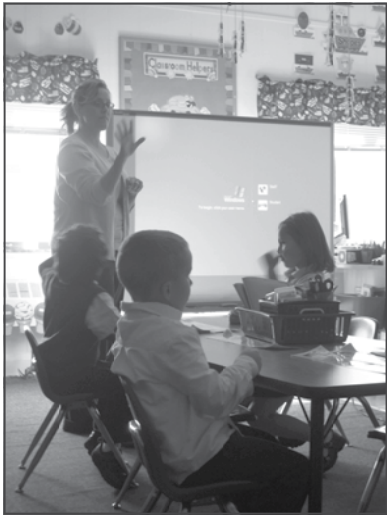
Stanford Achievement Test

The Stanford Achievement Test—Tenth Edition is administered annually in grades K-8 to determine student progress within and across the curriculum. The results below are reflective of the most recent administration in March. The data indicates the percentage of students within each grade level who performed below average (white), average (black) or above average (gray) in the areas of Math and Reading.





Technology



Using technology is an important part of life at Constellation Schools. We provide many technology tools to our students, to create a superior learning environment where they can explore new ways of working, delve into the practically unlimited encyclopedia of available knowledge, and understand the ways information is shared and problems are solved. Constellation recognizes the importance of learning in a safe environment, so we train our teachers to guide student learning, and back them up with a powerful set of filters and firewalls that keep our computer network focused on academic success.

We invest heavily into classroom technology, and are better equipped than most public schools. Nearly every classroom is outfitted with a large interactive board, where the teacher and students can view and manipulate information on a giant computer screen. Each SMART Board can be used to share an internet web quest with the entire class, or allow individual students to physically interact with digital objects on screen, moving, changing, writing, and drawing to get the point of the lesson. They make a fantastic big screen for videos from Discovery Streaming too! This is a subscription to a wealth of videos and lesson materials from The Discovery Channel. We subscribe because we know children today are "digital natives" who respond better and engage more when multimedia is used for teaching.



Constellation Schools are equipped with computer labs, where every child in a class can participate in guided computer based instruction as a group. Several of our middle schools are in a 1-to-1 laptop program, where every student has their own laptop that can be used in any class as needed.

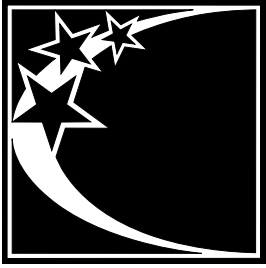
Constellation is always looking for the best tools to enrich our classrooms, and after many requests from our teachers and thorough evaluation, we have rolled out Student Response Systems (called "clickers"). Each student gets a clicker, like a small TV remote, and uses them to answer quick questions built into the lesson. This way every student gets the chance to answer every question, and the teacher instantly knows how many of the students "get it," and if she can move on or needs to spend more time on a topic. This really helps for children that might be a little shy about speaking up, but all the kids love using them. The instant data about student comprehension really helps the teacher fine tune the instruction.

Technology Learning

Our teachers receive significant technology training, from after school workshops to big conferences. Constellation provides top quality training so our teachers are ready to use modern educational technology to its fullest advantage. Our teacher coaches are also tech savvy and assist other teachers with technology use in the classroom.

One thing we're sure about, technology isn't going away, it's becoming more complex all the time. From our Mission Statement to our individual students, we strive to ensure the success of every child in our advancing technological society.





Special Services

Constellation Schools has a commitment to provide a free and appropriate public education for children with disabilities in accordance with state and federal laws, rules, and regulations. In that endeavor, the Educational Support Services Department works to assist all of our schools in the following specialized areas: Special Education, Psychological Services, Speech and Language Services, School Health Services, Occupational Therapy Services, and Physical Therapy Services. Additionally, the Educational Support Services Department assists each of our schools in creating and maintaining their Response to Intervention Process, Grade Level Intervention Teams, writing Section 504 Plans and Title I support.

Psychological Services

Psychologists employed by Constellation Schools are Ohio Department of Education licensed and have specialized training in both psychology and education. They collaborate with parents and community agencies in order to coordinate services and interventions for students. They provide consultative services to educators and are members of the school-based intervention teams. School psychologists assist in assessment, eligibility, and program planning for students with disabilities as part of a range of special education services that Constellation Schools provides. Counseling may be delivered to special education students who demonstrate behavioral difficulties that impede their educational progress. Crisis intervention is also provided when necessary.

Speech & Language Services

Good communication skills are important for speaking, listening, reading, writing, and learning at school. Some students have communication difficulties that can interfere with their ability to understand and participate in classroom instruction and impair their relationships with teachers and other children. Students who are formally identified as having communication problems that adversely affect their education are eligible to receive speech and/or language services from a speech & language pathologist. Speech & language services can be provided in a variety of ways, depending on the student's needs. Collaboration with teachers is important to ensure the student's communication goals are integrated into the classroom.

School Health Services

Constellation Schools believes that good health is basic to educational outcomes and productive living. Therefore, our coordinated school health program focuses on collaboration between administrators, staff, families and the community to ensure that our students learn in a healthy school environment and obtain a state of health and wellness that will allow them to learn and achieve their maximum potential. School health services, one component of a school health program, are provided by professional school nurses. School nursing is a specialized practice of professional nursing that advances the well-being, academic success and life-long achievement of students. To that end, the school nurses of Constellation Schools follow the standards of School Nursing Practice (National Association of School Nurses) and the state and federal laws that govern health services in schools.

Occupational Therapy Services

School-based occupational therapy is available for students who are eligible for special education services. The profession of occupational therapy is concerned with a person's ability to participate in meaningful and purposeful daily life activities or "occupations." In the school setting, the role of the occupational therapist is to help children perform important learning and school-related activities in order to fulfill their role as students. Occupational therapy services support a child's participation in occupations of daily living (dressing, eating, etc.), academic areas, play, leisure, and social interactions. As part of the educational team within a school setting, occupational therapists work closely with the student, parents, and educators to identify the skills of the student, the demands of the environment, and appropriate solutions for interventions based on each child's unique needs.