



# Constellation Schools Westpark Community Middle

*"The Right Choice for Parents and a Real Chance for Children!"*

## World Class Learning: The Passport To Success!



2011-2012 Annual Report

2012-2013 School Calendar



# Constellation Schools & Its History

Constellation Schools LLC was established to create and operate high-quality community (charter) schools by offering a superior, safe learning environment. Currently there are nineteen (19) Constellation Schools in Northeast Ohio.

Constellation Schools offer families a real choice for their children to receive a high-quality education. Our schools are privately operated public charter schools of choice. An education at Constellation starts during the early years of kindergarten, where we begin to prepare students to become successful, well-rounded, life-long learners by developing their academic foundation and providing them with the tools to be successful in their future endeavors. Our learning communities are characterized by small classes, high expectations, involved parents, and engaged students. We provide safe and secure buildings; the best available curriculum; current textbooks; and, extensive use of computers and other technology. Character education is the cornerstone of our program. Students are expected to adhere to a demanding code of behavioral conduct, including a dress code, and are held accountable for their actions through a comprehensive and strict disciplinary policy. Constellation Schools hires only highly qualified, state-certified/licensed teachers and provides extensive and on-going professional development for all personnel.

In addition, our schools offer parents a real opportunity to be involved in the education of their child by creating a learning community where teachers, parents and students work together to ensure academic success for all students. Parents are expected to be active participants in the education of their children, support the school's policies, supervise homework and attend conferences.

## **Constellation Schools Grades K-3**

### **Mansfield Community Elementary (2002)**

*Bethany Scott, Principal*

215 North Trimble Road, Mansfield, Ohio 44906  
419.522.4578 • 419.522.0045 fax

### **Collinwood Village Academy (2011)**

*Peter Wilson, Principal*

716 East 156th Street, Cleveland, Ohio 44110  
216.451.4022 • 216.451.4040 fax

### **Eastside Arts Academy (2011)**

*Brian Belmont, Principal*

7600 Lansing Avenue, Cleveland, Ohio 44105  
216.441.9830 • 216.441.9834 fax

## **Constellation Schools Grades K-4**

### **Old Brooklyn Community Elementary (1998)**

*Cherie Kaiser, Principal*

4430 State Road, Cleveland, Ohio 44109  
216.661.7888 • 216.661.5975 fax

### **Westpark Community Elementary (2001)**

*Sheila Delzani, Principal*

16210 Lorain, Cleveland, Ohio 44111  
216.688.0271 • 216.688.0273 fax

## **Constellation Schools Grades K-4**

### **Lorain Community Elementary (2001)**

*Melisa Shady, Principal*

201 West Erie Avenue, Lorain, Ohio 44052  
440.204.2130 • 440.204.2134 fax

### **Puritas Community Elementary (2003)**

*Meg Paulus, Principal*

15204 Puritas Avenue, Cleveland, Ohio 44135  
216.688.0680 • 216.688.0609 fax

## **Constellation Schools Grades K-7**

### **Elyria Community (2001)**

*Tracey Frierson, Principal*

Elementary 300 North Abbe Road, Elyria, Ohio 44035  
Middle 335 South Logan Street, Elyria, Ohio  
440.366.5225 • 440.366.6280 fax

### **Westside Community School of the Arts (2007)**

*Deborah Kilbane, Principal*

3727 Bosworth, Cleveland, Ohio 44111  
216.688.1900 • 216.688.1902 fax

## **Constellation Schools Grades K-6**

### **Stockyard Community Elementary (2004)**

*Amber Edmisten, Principal*

3200 West 65th Street, Cleveland, Ohio 44102  
216.651.5143 • 216.651.9515 fax

## **Constellation Schools Grades 4-8**

### **Mansfield Community Middle (2009)**

*Bethany Scott, Principal*

455 Park Avenue West, Mansfield, Ohio 44906  
419.522.3563 • 419.522.2705 fax

## **Constellation Schools Grades 5-8**

### **Old Brooklyn Community Middle (2006)**

*Amy Mobley, Principal*

4430 State Road, Cleveland, Ohio 44109  
216.351.0280 • 216.661.5975 fax

### **Westpark Community Middle (2006)**

*Karil Sako, Principal*

16210 Lorain, Cleveland, Ohio 44111  
216.251.7200 • 216.251.0355 fax

### **Puritas Community Middle (2006)**

*Donald Disantis, Principal*

15204 Puritas Avenue, Cleveland, Ohio 44135  
216.251.1596 • 216.251.3540 fax

### **Lorain Community Middle (2006)**

*Debbie Thoren, Principal*

307 West 7th Street, Lorain, Ohio 44052  
440.242.2023 • 440.244.0857 fax

## **Constellation Schools Grades K-8**

### **Madison Community Elementary (2004)**

*Melissa Rice, Principal*

2015 West 95th Street, Cleveland, Ohio 44102  
216.651.5212 • 216.651.9040 fax

## **Constellation Schools Grades 7-8**

### **Stockyard Community Middle (2010)**

*Gregory Cek, Principal*

3224 West 65th Street, Cleveland, Ohio 44102  
216.961.5052 • 216.961.9227 fax

## **Constellation Schools Grades K-12**

### **Parma Community (2000)**

*Linda Geyer, Principal*

Elementary

7667 Day Drive, Parma, Ohio 44129

440.888.5490 • 440.888.5890 fax

Middle and High

5983 West 54th Street, Parma, Ohio 44129

440.845.2587 • 440.845.2834 fax

### **Outreach Academy (2006)**

*Mary Wideman, Principal*

3727 Bosworth, Cleveland, Ohio 44111  
216.688.1900 • 330.732.2575 fax



## Chairman's Message

---

Constellation's schools continued to excel for the 2010/2011 school year, with one rated "Excellent with Distinction," five rated "Excellent," four rated "Effective," and, for the first time, no school rated below "Continuous Improvement." Although it will be several more weeks before we receive the ratings for the 2011/2012 school year, we know that everyone at every Constellation school has worked hard this year to ensure that the children entrusted to us are receiving the high quality education they each deserve.

During this past school year Constellation schools were educating more than 4,200 students and we expect to have our total student enrollment exceed 4,600 students for the 2012/2013 school year – nearly a 10% increase in enrollment! However, as our schools and organization grow, we know it is critical for us to maintain the principles that have gotten us to where we are: safe, pleasant classrooms and schools which emphasize respect and responsibility; highly qualified and compassionate teachers and staff focused on bringing out the best in every child; and, administrators responsive to the needs of the families we serve.

We opened schools in Cleveland's Collinwood and Slavic Village neighborhoods this year and we are hopeful that they will grow and continue to have the support of their respective communities. Parent support and involvement remains important to our school communities. We thank those parents who have been involved over the years and are constantly searching for ways to provide opportunities for every parent to be actively engaged in the education of his/her children. The role parents play in the education of their children should not be underestimated. Involved, active parents ensure that students will be engaged in their education. When parents take an interest in what's going on at school, children are better behaved and better students. Throughout Constellation we are fortunate to have the support of concerned parents.

Because our schools continue to grow, we added classrooms at our Madison and Stockyard schools during the year, and we are looking forward to moving our Lorain elementary and middle schools into our newly renovated school building for the coming year. Our Parma and Puritas schools are filling their buildings to capacity and we are looking for solutions to our space issues there.

This year we are working with Teach for America to bring some new teachers into some of our schools. Teach for America recruits students from high quality colleges and universities and provides training so they can teach in urban districts throughout the United States. We are excited about this new partnership and hope it will help us to continue bringing the best possible education to the children we serve. We have also expanded our music programs and extracurricular activities at many of our schools as we strive to meet the various needs of the diverse students that we serve.

We continue to believe strongly that our schools are a great public schools alternative, and that Constellation's community schools are:  
The Right Choice for Parents and a Real Chance for Children.

Richard A. Lukich, Chairman  
Constellation Schools LLC



# Directors & Administrative Staff

**Gerald Preseren**  
*Executive Director*

**Elizabeth Long**  
*Receptionist*

**Thomas Babb**  
*Treasurer*

**Jean Sandler**  
*Accounting Manager*

**Dee Crawford**  
**Edie Myhre**  
*Administrative Assistants-Finance*

**Susan Knurek**  
*Administrative Assistant-Finance p.t.*

**Marilyn Kehn**  
*Payroll p.t.*

**Rebecca Novak**  
*EMIS Manager*

**David Calco**  
*Technology Coordinator*

**Gary Schaefer**  
**Lisa Geyer**  
**Randall Kufel**  
**Shawnda Thombs**  
**Lou Videc**  
**David Colon**  
*Technology Specialists*

**Pamela Goswick**  
*Coordinator of Educational Programs*

**Roy Zeman**  
*Coordinator of Educational Services*

**Becky Jordan**  
**Heather Zeman**  
**Kevin Panek**  
**Jillian Lukich**  
*School Psychologists*

**Amanda Cell**  
**Jill Teresczuk**  
**Jillian Zak**  
**Jill Cika**  
**Angela Harwood**  
*Speech & Language Pathologists*

**Frances Horvath**  
**Karen Boose**  
*Occupational Therapists*

**Kimberly Stanislo**  
*Supervisor of Health Services*

**Karen Baker**  
**Malinda Miller**  
**Lisa Stern**  
**Julia Howerton**  
**Kelley Vazquez**  
**Elizabeth Claus**  
**Kristen Johnson**  
**Diane Sauder**  
**Rochelle Kirby**  
**Albert Krosse**  
*School Nurses*

**Sharon Morgan**  
*Coordinator of Staff & Professional Development*

**Marybeth Oko**  
*Administrative Assistant*

**Sheila Woidke**  
**Adrienne Dancsok**  
**Megan Lange**  
**Shelly Wohl**  
**Erin Towne**  
**Kelly Koehler**  
**Laura Horvath**  
*Teacher Coach*

**April Gunderman**  
*Manager of Special Education*

**Jeffrey Soltis**  
*Facility Operations Manger*

**John Allen**  
**Brian Preseren**  
*Maintenance*

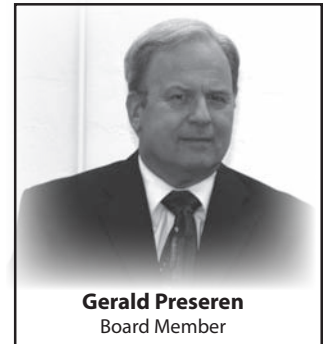
**Karen Florian**  
*Human Resource Manager*

**Amy Spears**  
*Administrative Assistant*

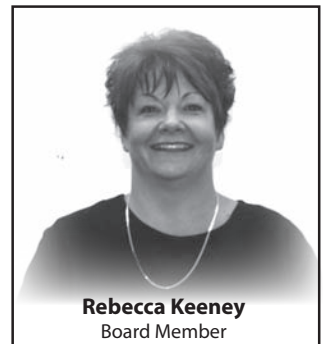
**Lisa Vinarcik**  
*Manager of Marketing & Public Relations*



**Richard Lukich**  
Board Chairman



**Gerald Preseren**  
Board Member



**Rebecca Keeney**  
Board Member

## Constellation Schools: Westpark Community Middle

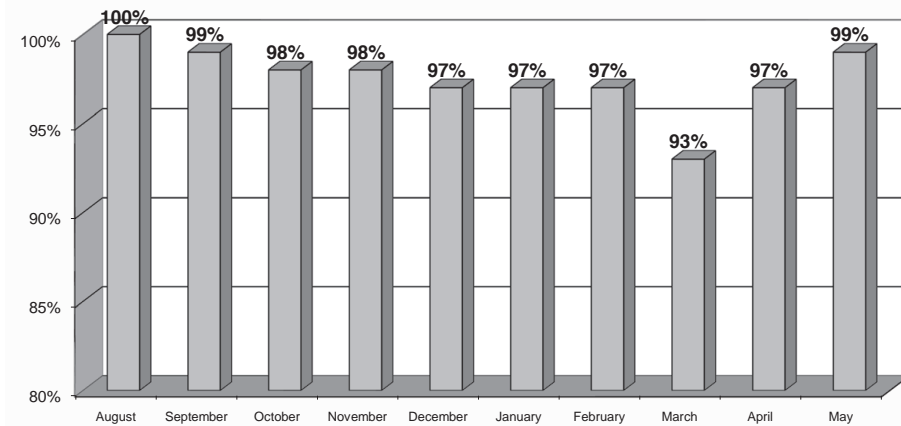
Sponsor: Peggy Young, *Director of Community Schools*

Buckeye Community Hope Foundation - 3021 East Dublin, Granville Road - Columbus, Ohio 43231 - 614.942.2020

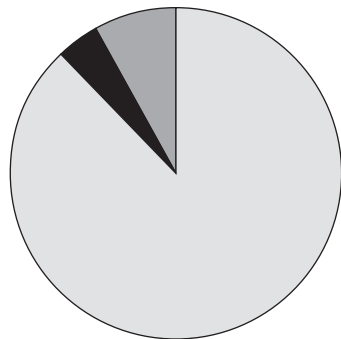


# Westpark Community Middle Staff & Board

**2011-2012 Staff Monthly Attendance Percentage**

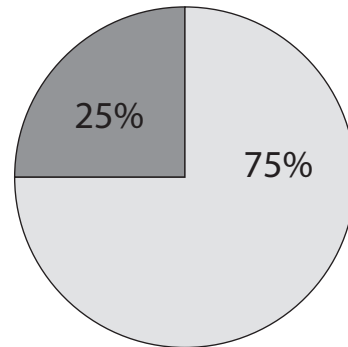


**Staff Demographics**



Caucasian 88%  
 African American 4%  
 Hispanic 8%  
 Asian 0%  
 Multiracial 0%  
 Other 0%

**Staff Gender**



Male 25%  
 Female 75%

**Westpark Community Middle Staff**

**Principal**  
Karil Sako

**Admin. Assistant**  
Valentina Turtoi

**5th Grade**  
 Judy Fortuna LA/Reading/SS  
 Anna Kontos Math/SS  
 Victoria Nowak Science/Math

**6th Grade**  
 Jennifer Kelly Reading/LA/SS  
 Rebecca Kovacs Math/SS  
 Matthew Hammon Science/SS

**7th Grade**  
 Adam Garcia Math/SS  
 Jennifer Clark Reading/LA/SS  
 Michelle Clark Science/Reading/LA

**8th Grade**  
 Shannon O'Malley Math/Science  
 Mark Wojton Science/SS  
 Haley McDonough Reading/LA/Math

**Title 1**  
Kim Clay

**Music**  
Valerie Stewart

**Physical Education**  
Brett Baisch

**Bldg. Sub**  
Julie Gargasz

**Special Education**  
Deborah Lockwood

**Aide**  
 Leslie Brehmer  
 Linda Filarski  
 Miraida Santiago

**Food Service**  
Lois Cagny

**Cleaner**  
Cy Sako

**Westpark Community Middle Board**

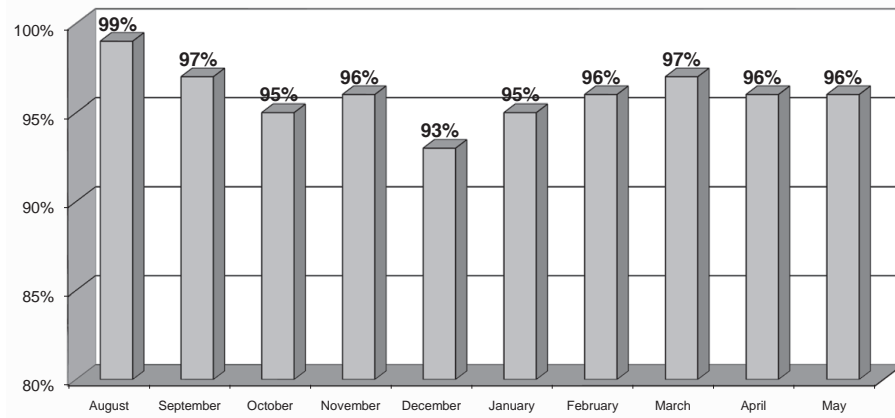
**President**  
Bruce Szczepinski

**Members:** Melisa Shady • Bridget Tovanche • Amy Mobley  
Linda Skupski • Holly Morley



# Student Enrollment, Attendance & Demographics

**2011-2012 Student Monthly Attendance Percentage**



## About Our Students

Students at Westpark Community Middle are enrolled on a first come, first served basis during the first two weeks of December. Those students who are currently enrolled are ensured a place for the following school year if they enroll during these two weeks. If more students apply than there are spots, a lottery is held and a waiting list is formed.

### Student per Class/Teacher Ratio for the 2011-2012

24 Students : 1 Teacher maximum

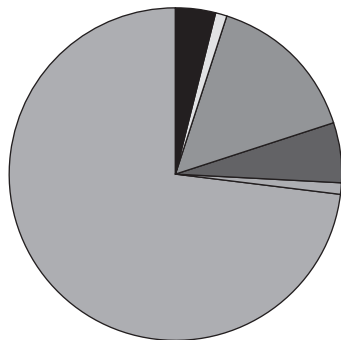
186 Students Enrolled

49% Eligible for Low Income

### Demographics

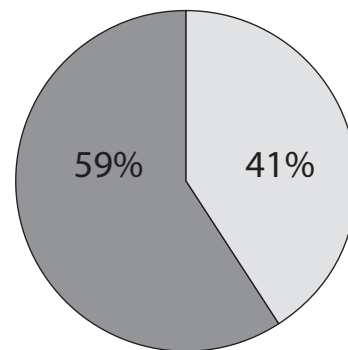
- 1 % Asian
- 4 % African American
- 0 % American Indian/Alaskan Native
- 73 % Caucasian
- 15 % Hispanic
- 6 % Multiracial
- 1 % Native Hawaiian/Pacific Islander
- 0 % Other

## Student Demographics



- Asian 1%
- African American 4%
- Hispanic 15%
- American Indian/Alaskan Native 0%
- Multiracial 6%
- Native Hawaiian/Pacific Islander 1%
- Caucasian 73%
- Other 0%

## Student Gender



- Male 59%
- Female 41%

## Home School Notification

The school is a public school and students enrolled in and attending the school are required to take achievement tests and other examinations prescribed by law. In addition, there may be other requirements for students at the school that are prescribed by law. Students who have been excused from the compulsory attendance law for the purpose of home education as defined by the Administrative code shall no longer be excused for that purpose upon their enrollment in a community school.



# Educational Plans/Programs



Our curriculum is aligned with the Ohio Academic Content Standards and is designed to guide students toward their grade level goals. Content areas include: reading/language arts, spelling/phonics, math, science, social studies, music, physical education/health and computers. During the 2011/2012 academic year, all Constellation Schools utilized the Ohio Academic Content Standards to prepare our students for the Ohio Achievement Assessments in Grades 3-8 and the Ohio Graduation Test in Grade 10. With the state's adoption of the Common Core Standards in English language arts and math and newly revised science and social studies standards, teachers are preparing to make the necessary adjustments to our current curriculum in an effort to stay aligned with the state standards.

Title 1 services (small grouping with a reading/math teacher) and Special Education Services are implemented to assist students who qualify for special services. Numerous online programs are utilized as part of our Response to Intervention program in an effort to move children through the intervention pyramid. Furthermore, classroom instruction is enhanced through the use of technology in our computer labs, integrating classroom projects with such programs as word processing, power point presentations and internet research. Many of our classrooms are utilizing Smart Board Education and all of our schools are utilizing the latest in technology innovations. Currently, we are working with the Virtual Community School's branching program to offer Algebra I to 8th graders who meet the criteria at select Constellation Schools.

Teachers establish high academic measures for achievement and behavior in their classrooms. Through age appropriate teaching methods, all students will reach or exceed their maximum potential. The cornerstone of our academic program is our strong emphasis on Character Education. Character Education permeates throughout our curriculum. All of our classrooms and hallways have a variety of posters and bulletin boards that define acceptable character. Good behavior and appropriate manners from everyone is a constant expectation of our students and staff. Character Education enhances our educational plan while securing a safe and nurturing learning environment for all of our students.

Students were able to highlight their talents and skills with assorted programming throughout the year. The All Constellation Play, "Disney's Alice in Wonderland, Jr." was presented in November for students with the dramatic talent. The All Constellation Spelling Bee brought together the top spellers from each school in December. In January, the All Constellation Science Fair provides students with the opportunity to share various science projects. Finally, the All Constellation Band Festival in April provided our students studying instrumental music a chance to showcase their talents. Afterschool clubs are offered in a variety of our schools addressing such interests as: drama, basketball, comic books, reading and homework. All of these programs are organized and facilitated by staff who go above and beyond to provide our students with a well-rounded education rich with opportunities.



# Professional Development

Constellation Schools are committed to quality professional development. Our Local Professional Development Committee (LPDC) follows all state requirements to renew teaching/principal certificates and licensures. Our professional renewal process ensures a close connection between renewal activities of the educators and classroom practices. The continued development and improvement of relevant and applicable professional pedagogical skills and knowledge are essential to the education process. Through professional development we can ensure that all students reach their full potential to contribute to a democratic society including maximizing each student's abilities and encouraging self-reflection and a lifelong love of learning.

Several professional development opportunities before the start of the school year were provided such as:

- Classroom Management
- Character Education in the Classroom
- Differentiated Instruction
- Progress book
- Teaching Strategies
- Special Education Procedures
- Technology in the Classroom
- Curriculum

## **Professional Development Coaches**

The Professional Development Coach positions provide a framework of support, professional development, and standards based assessments and evaluations for all teachers. The coaches create an atmosphere for collaboration and teamwork in helping achieve the goals and objectives of each individual teacher.

Constellation Schools provided teachers with an opportunity to choose various professional development workshops to enhance their own professional growth. Such opportunities included:

- Grade Level Conferences
- Title One Conference
- Middle School Conferences
- Improving Reading and Math Instruction Workshops
- Smart board Training
- Reading Plus
- Study Island
- Technology Conferences
- Common Core Standards

## **Resident Educator Program**

A four-year Resident Educator program of support and mentoring for new teachers will provide educators just entering the profession with quality mentoring and guidance essential for a long and flourishing career. Successful completion of the residency program will be required to qualify for a five-year professional educator license.

A full year program was provided to all first-year teachers. This program offered monthly meetings, support, and information that enhanced the first-year teacher's experience. Teacher Development Coaches were added to schools to work with Resident Educators throughout the school year. The coaches were available to the Resident Educators to serve as mentors within the school day. The first full year experience with a mentor provided the support needed as well as provided for individual needs for every first year teacher. The program continues throughout the next three years of the resident educators license.

## **Leadership Training Program**

The leadership training program is a one year intern program that provides an intense hands-on experience for highly qualified, successful teachers who wish to become leaders. The professional development internship is ongoing, highly focused, and designed to meet the individual needs of each intern.



# OAA - Ohio Achievement Assessments

---

Wednesday, August 22, 2012

## **State Delays District Report Cards Over Data Problems**

As you already know, the State Board of Education voted Monday, August 20, 2012 to delay the release of district report cards until at least next month given questions about the reliability of enrollment data that have arisen due to reporting problems in Columbus City Schools and elsewhere.

Acting Superintendent of Public Instruction Michael Sawyers told the board he had received verbal permission from the U.S. Department of Education to delay the release of district report cards because ratings and rankings could be affected. Funding streams tied to Ohio's adherence to federal education laws would not be impacted, he said.

There have been no major red flags that I know of through auditor Yost's office," he said, noting that including charters there are a total of more than 3,500 schools throughout the state. "Less than three percent most likely are the number of schools that would go through a formal review process."

**Summary:** Auditor Yost received calls from 25 schools districts "self-reporting" that they altered attendance records.

Ohio Coalition for Quality Education works closely with all levels of state government. Over the last two weeks we've had conversations with the State Board of Education, the Department of Education and later this week have a meeting with the Auditor of State. At this juncture, we doubt if anyone knows precisely when Auditor Yost will complete his investigation.

Ron F. Adler, President

Ohio Coalition for Quality Education

1808 Sulky Trail I Miamisburg, OH 45342

Phone: 937.239.7969

[radler@ocqe.org](mailto:radler@ocqe.org)

[www.ocqe.org](http://www.ocqe.org)

***Constellation Schools will provide parents with their child's school report card upon receiving the finalized version from the Ohio Department of Education.***



# Parent Notification System

Constellation Schools knows how important it is to keep you up-to-date with school news and school happenings. We will be communicating to you through Ohio Alerts, a mass notification system. Please follow the directions below to sign up for this service. If you do not sign up, you will not be notified via email or text messaging. Please note if your email or cell phone number changes, you must update it through your Ohio Alert account.

All of Constellation Schools have implemented the Ohio Alerts notification system for parents.  
To subscribe to your school's alerts, please enter the following link: <http://www.ohioalerts.org>

Click on Cuyahoga County (Constellation Schools Administrative office is located in Cuyahoga, regardless if your school is located in Lorain or Mansfield)  
Click on Constellation Schools  
Click on Subscribe to Alerts  
Enter your full name  
Click on either text or email- you will have to sign up twice if you would like both

## **To subscribe for text alerts:**

- click on text
- enter your cell phone number with the area code
- click on your phone provider
- click on the school(s) you would like to receive text alerts from
- enter in the security code
- click the COPPA compliant
- click subscribe
- you will receive a text message from [Alerts@constellationschools.com](mailto:Alerts@constellationschools.com) stating you have subscribed to receive text alerts

## **To subscribe to email alerts:**

- click on email
- enter your email address  
*YOUR EMAIL MUST BE A HOTMAIL, GMAIL, SBCGLOBAL, MSN, ROADRUNNER, YAHOO AOL, OR ANY OTHER EMAIL, IT CAN NOT BE YOUR PHONE NUMBER @MMS.ATT.NET*
- DO NOT ENTER YOUR PHONE NUMBER AS THE EMAIL ADDRESS BECAUSE YOU WILL NOT RECEIVE THE ALERTS.**
- click on the school(s) you would like to receive email alerts from
- enter in the security code
- click the COPPA compliant
- click subscribe
- you will receive an email message from [Alerts@constellationschools.com](mailto:Alerts@constellationschools.com) stating you have subscribed to receive email alerts

After you are done subscribing, the link below is to access your personal Ohio Alerts account.  
Please log in at: <http://www.ohioalerts.org/Login.aspx>

If you have any questions or need further assistance, please email or call Lisa Vinarcik, Manager of Marketing and PR at [Vinarcik.lisa@constellationschools.com](mailto:Vinarcik.lisa@constellationschools.com) or 216-712-7600 extension 50107.



# Technology



Using technology is an important part of life at Constellation Schools. We provide many technology tools to our students, to create a superior learning environment where they can explore new ways of working, delve into the practically unlimited encyclopedia of available knowledge, and understand the ways information is shared and problems are solved. Constellation recognizes the importance of learning in a safe environment, so we train our teachers to guide student learning, and back them up with a powerful set of filters and firewalls that keep our computer network focused on academic success.

We invest heavily into classroom technology, and are better equipped than most public schools. Nearly every classroom is outfitted with a large interactive board, where the teacher and students can view and manipulate information on a giant computer screen. Each SMART Board can be used to share an internet web quest with the entire class, or allow individual students to physically interact with digital objects on screen, moving, changing, writing, and drawing to get the point of the lesson. They make a fantastic big screen for videos from Discovery Streaming too! This is a subscription to a wealth of videos and lesson materials from The Discovery Channel. We subscribe because we know children today are "digital natives" who respond better and engage more when multimedia is used for teaching.



Constellation Schools are equipped with computer labs, where every child in a class can participate in guided computer based instruction as a group. Several of our middle schools are in a 1-to-1 laptop program, where every student has their own laptop that can be used in any class as needed.

Constellation is always looking for the best tools to enrich our classrooms, and after many requests from our teachers and thorough evaluation, we have rolled out Student Response Systems (called "clickers"). Each student gets a clicker, like a small TV remote, and uses them to answer quick questions built into the lesson. This way every student gets the chance to answer every question, and the teacher instantly knows how many of the students "get it," and if she can move on or needs to spend more time on a topic. This really helps for children that might be a little shy about speaking up, but all the kids love using them. The instant data about student comprehension really helps the teacher fine tune the instruction.

## Technology Learning

Our teachers receive significant technology training, from after school workshops to big conferences. Constellation provides top quality training so our teachers are ready to use modern educational technology to its fullest advantage. Our teacher coaches are also tech savvy and assist other teachers with technology use in the classroom.

One thing we're sure about, technology isn't going away, it's becoming more complex all the time. From our Mission Statement to our individual students, we strive to ensure the success of every child in our advancing technological society.





# Special Services

Constellation Schools has a commitment to provide a free and appropriate public education for children with disabilities in accordance with state and federal laws, rules, and regulations. In that endeavor, the Educational Support Services Department works to assist all of our schools in the following specialized areas: Special Education, Psychological Services, Speech and Language Services, School Health Services, Occupational Therapy Services, and Physical Therapy Services. Additionally, the Educational Support Services Department assists each of our schools in creating and maintaining their Response to Intervention Process, Grade Level Intervention Teams, writing Section 504 Plans and Title I support.

## **Psychological Services**

Psychologists employed by Constellation Schools are Ohio Department of Education licensed and have specialized training in both psychology and education. They collaborate with parents and community agencies in order to coordinate services and interventions for students. They provide consultative services to educators and are members of the school-based intervention teams. School psychologists assist in assessment, eligibility, and program planning for students with disabilities as part of a range of special education services that Constellation Schools provides. Counseling may be delivered to special education students who demonstrate behavioral difficulties that impede their educational progress. Crisis intervention is also provided when necessary.

## **Speech & Language Services**

Good communication skills are important for speaking, listening, reading, writing, and learning at school. Some students have communication difficulties that can interfere with their ability to understand and participate in classroom instruction and impair their relationships with teachers and other children. Students who are formally identified as having communication problems that adversely affect their education are eligible to receive speech and/or language services from a speech & language pathologist. Speech & language services can be provided in a variety of ways, depending on the student's needs. Collaboration with teachers is important to ensure the student's communication goals are integrated into the classroom.

## **School Health Services**

Constellation Schools believes that good health is basic to educational outcomes and productive living. Therefore, our coordinated school health program focuses on collaboration between administrators, staff, families and the community to ensure that our students learn in a healthy school environment and obtain a state of health and wellness that will allow them to learn and achieve their maximum potential. School health services, one component of a school health program, are provided by professional school nurses. School nursing is a specialized practice of professional nursing that advances the well-being, academic success and life-long achievement of students. To that end, the school nurses of Constellation Schools follow the standards of School Nursing Practice (National Association of School Nurses) and the state and federal laws that govern health services in schools.

## **Occupational Therapy Services**

School-based occupational therapy is available for students who are eligible for special education services. The profession of occupational therapy is concerned with a person's ability to participate in meaningful and purposeful daily life activities or "occupations." In the school setting, the role of the occupational therapist is to help children perform important learning and school-related activities in order to fulfill their role as students. Occupational therapy services support a child's participation in occupations of daily living (dressing, eating, etc.), academic areas, play, leisure, and social interactions. As part of the educational team within a school setting, occupational therapists work closely with the student, parents, and educators to identify the skills of the student, the demands of the environment, and appropriate solutions for interventions based on each child's unique needs.



# Constellation Schools Westpark Community Middle Financial Report for Fiscal Year 2012

The Cash Basis Report of Revenues and Expenditures for the Year ended June 30, 2012 reflects the activities of Constellation Schools: Westpark Community Middle during the year. The information provided below refers to this report and the accompanying graphs.

**Highlights for the Year:** ✓ 6th annual audit issued for 2011 with an "unqualified opinion" (best opinion available)  
 ✓ Received the Ohio Auditor of State Award for exemplary financial reporting for the year 2011

## Revenues

The largest source of operating revenue (84%) comes from the State of Ohio School Foundation Program. This funding is earned at a base rate of \$5,653 for each student enrolled during the year. Additional funds are provided for the special needs of students, the poverty level of the community in which each student resides, and other adjustments.

State and Federal Grants (12%) supplement school operations for specific purposes. The school received grants for Title I Intervention, Professional Development, Technology, Special Education, State Fiscal Stabilization Funds, American Recovery and Reinvestment Act, Race to the Top, Education Jobs and Electronic Communications.

Materials Fees (2%) are collected from each student to provide consumable materials used during the year.

Other income (2%) includes school lunch collections, contributions and donations and other miscellaneous items.

Constellation Schools: Westpark Community Middle	
<i>Cash Basis Statement of Revenues and Expenditures for the Year ended June 30, 2012 (Unaudited)</i>	
<b>Beginning Cash - July 1, 2011</b>	<b>\$ 162,879</b>
<b>Revenues</b>	
State Foundation	\$ 1,337,930
State & Federal Grants	\$ 194,835
Material Fees	\$ 36,973
Other Income	\$ 22,093
<b>Total Revenue</b>	<b>\$ 1,591,831</b>
<b>Expenditures</b>	
Personnel	\$ 657,107
Retirement & Benefits	\$ 199,579
Purchased Services	\$ 685,934
Supplies & Materials	\$ 65,966
Capital Outlay	\$ 34,107
Other	\$ 29,514
<b>Total Expenditures</b>	<b>\$ 1,672,207</b>
<b>Ending Cash - June 30, 2012</b>	<b>\$ 82,503</b>

## Expenditures

Personnel services, combined with retirement and benefits, accounted for 51% of the expenditures for the year. These expenditures include principal, support staff, teachers, state retirement systems, employment taxes and health insurances.

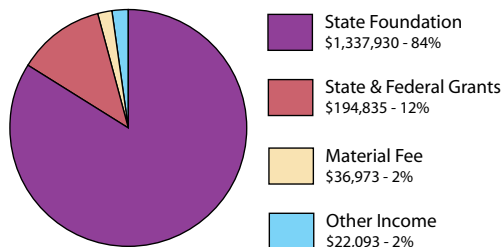
Purchased services (41%) include expenditures for student support services (speech, psychologist, health, physical therapy and occupational therapy), special education services, field trips, professional development, management services, sponsor services, test scoring, data reporting, facility lease and operations, equipment leases, telephone, postage, travel, marketing, printing, food services and other services.

Supplies and materials (4%) include textbooks, instructional supplies, testing materials, office supplies, medical supplies, instructional software and maintenance supplies.

Capital Outlay (2%) includes purchases of equipment and furniture.

Other (2%) includes audit fees, insurances (property, liability, fidelity bond, directors & officers), dues and subscriptions and other miscellaneous.

Constellation Schools: Westpark Community Middle  
Cash Basis Revenues for the Year Ended June 30, 2012



## Additional Information

A more detailed set of financial statements may be obtained by calling (216) 712-7600, writing to the Treasurer, Constellation Schools 5730 Broadview Road, Parma, Ohio 44134 or by e-mail at the following address: [babb.thomas@constellationschools.com](mailto:babb.thomas@constellationschools.com)

During the fall of 2012 an audit of the school's financial records for the year ended June 30, 2012 will be completed. The audit report should be available during the winter at the above address and on the Auditor of State's website: [www.auditor.state.oh.us](http://www.auditor.state.oh.us).

Constellation Schools: Westpark Community Middle  
Cash Basis Expenditures for the Year Ended June 30, 2012

