



Constellation Schools Westpark Community Elementary

"The Right Choice for Parents and a Real Chance for Children!"



"Educating the minds & hearts of our students"

2012-2013 Annual Report

2013-2014 School Calendar



Constellation Schools & Its History

Constellation Schools LLC was established to create and operate high-quality community (charter) schools by offering a superior, safe learning environment. Currently there are nineteen (19) Constellation Schools in Northeast Ohio.

Constellation Schools offer families a real choice for their children to receive a high-quality education. Our schools are privately operated public charter schools of choice. An education at Constellation starts during the early years of kindergarten, where we begin to prepare students to become successful, well-rounded, life-long learners by developing their academic foundation and providing them with the tools to be successful in their future endeavors. Our learning communities are characterized by small classes, high expectations, involved parents, and engaged students. We provide safe and secure buildings; the best available curriculum; current textbooks; and, extensive use of computers and other technology. Character education is the cornerstone of our program. Students are expected to adhere to a demanding code of behavioral conduct, including a dress code, and are held accountable for their actions through a comprehensive and strict disciplinary policy. Constellation Schools hires only highly qualified, state-certified/licensed teachers and provides extensive and on-going professional development for all personnel.

In addition, our schools offer parents a real opportunity to be involved in the education of their child by creating a learning community where teachers, parents and students work together to ensure academic success for all students. Parents are expected to be active participants in the education of their children, support the school's policies, supervise homework and attend conferences.

Constellation Schools Grades K-3

Mansfield Community Elementary (2002)

Bethany Scott, Principal

215 North Trimble Road, Mansfield, Ohio 44906
419.522.4578 • 419.522.0045 fax

Constellation Schools Grades K-4

Collinwood Village Academy (2011)

Peter Wilson, Principal

716 East 156th Street, Cleveland, Ohio 44110
216.451.4022 • 216.451.4040 fax

Eastside Arts Academy (2011)

Brian Belmont, Principal

6700 Lansing Avenue, Cleveland, Ohio 44105
216.441.9830 • 216.441.9834 fax

Old Brooklyn Community Elementary (1998)

Cherie Kaiser, Principal

4430 State Road, Cleveland, Ohio 44109
216.661.7888 • 216.661.5975 fax

Westpark Community Elementary (2001)

Sheila Delzani, Principal

16210 Lorain, Cleveland, Ohio 44111
216.688.0271 • 216.688.0273 fax

Constellation Schools Grades K-4

Lorain Community Elementary (2001)

Melisa Shady, Principal

1110 West 4th Street, Lorain, Ohio 44052
440.204.2130 • 440.204.2134 fax

Puritas Community Elementary (2003)

Meg Colwell, Principal

15204 Puritas Avenue, Cleveland, Ohio 44135
216.688.0680 • 216.688.0609 fax

Constellation Schools Grades K-8

Elyria Community (2001)

Tracey Frierson, Principal

Elementary 300 North Abbe Road, Elyria, Ohio 44035
Middle 335 South Logan Street, Elyria, Ohio 44035
440.366.5225 • 440.366.6280 fax

Westside Community School of the Arts (2007)

Deborah Kilbane, Principal

3727 Bosworth, Cleveland, Ohio 44111
216.688.1900 • 216.688.1902 fax

Madison Community Elementary (2004)

Melissa Rice, Principal

2015 West 95th Street, Cleveland, Ohio 44102
216.651.5212 • 216.651.9040 fax

Constellation Schools Grades 4-8

Mansfield Community Middle (2009)

Bethany Scott, Principal

1033 Larchwood, Mansfield, Ohio 44907
419.522.3563 • 419.522.2705 fax

Constellation Schools Grades 5-8

Old Brooklyn Community Middle (2006)

Amy Mobley, Principal

4430 State Road, Cleveland, Ohio 44109
216.351.0280 • 216.661.5975 fax

Westpark Community Middle (2006)

Karil Stohlman, Principal

16210 Lorain, Cleveland, Ohio 44111
216.251.7200 • 216.251.0355 fax

Puritas Community Middle (2006)

Meg Colwell, Principal

15204 Puritas Avenue, Cleveland, Ohio 44135
216.251.1596 • 216.251.3540 fax

Lorain Community Middle (2006)

Melisa Shady, Principal

1110 West 4th Street, Lorain, Ohio 44052
440.242.2023 • 440.204.2134 fax

Constellation Schools Grades K-6

Stockyard Community Elementary (2004)

Amber Edmisten, Principal

3200 West 65th Street, Cleveland, Ohio 44102
216.651.5143 • 216.651.9515 fax

Constellation Schools Grades 7-8

Stockyard Community Middle (2010)

Gregory Cek, Principal

3224 West 65th Street, Cleveland, Ohio 44102
216.961.5052 • 216.961.9227 fax

Constellation Schools Grades K-12

Parma Community (2000)

Linda Geyer, Principal

Elementary

7667 Day Drive, Parma, Ohio 44129

440.888.5490 • 440.888.5890 fax

Middle and High

5983 West 54th Street, Parma, Ohio 44129

440.845.2587 • 440.845.2834 fax

Outreach Academy (2006)

Mary Wideman, Principal

3727 Bosworth, Cleveland, Ohio 44111

216.688.1900 • 330.732.2575 fax



Chairman's Message

Constellation schools are dedicated to providing an innovative, high quality education that inspire students to learn and achieve their goals. Over the past 15 years, Constellation schools continue to be the right choice for parents and a real chance for children. For the 2012/2013 school year, Constellation schools performed very well. We had three schools in the top ten; six schools in the top 25, and; 14 schools in the top 100. No organization showed better overall results. I want to congratulate and thank all the teachers, staff and parents for their hard work that was put forth into helping our students, your children. Despite our many successes, there is still much work to do. Every time we do well the bar gets raised. I know our staff has the dedication to continue to provide your child with the high quality education that your child deserves. We look forward to the 2013/2014 school year.

Looking over this past year our schools have grown and continue to improve. Constellation Schools: Lorain Community Elementary and Middle purchased the former Irving School. This building is a 70,000 square foot building that offers 30 classrooms for Kindergarten through eighth grade. By having both of our Lorain schools in one building helps our families in Lorain county. Besides our new Lorain school, Constellation Schools: Mansfield Community Middle purchased the former Ranchwood School. Fourth through eighth grade students are located in the 22,500 square foot building instead of the old YMCA. Both Lorain and Mansfield now have their own wonderful facility that they can call "Home."

We celebrated the promotion of over 300 eighth graders from our middle schools. These students are well on their way to the next four years of high school. 52 of the 300 eighth graders are now enrolled as freshman at Constellation Schools: Parma Community High. Our high school enrolls students from our Cuyahoga County Constellation schools, as well as neighboring parochial, charter and public schools. We had 100% of our Seniors graduate last year, which was our 3rd graduating class. The class of 2014 achieved a huge milestone by passed the Reading and Writing portion of the OAA this year with 100%.

Many new programs have been adopted this past year at Constellation Schools. Ohio Alerts was implemented to keep parents up to date with events and alerts occurring at the school. Many parents signed up for this system which made communication with them quick and easy. Another way we notify our parents was with our social media platforms. Constellation Schools can be found on Facebook, Twitter, YouTube, Pinterest, Instagram, Google+, LinkedIn, Yelp and many more. If you have not liked us or followed us, please engage with us today!

We appreciate the support our families continue to provide to our schools, and strongly believe that our licensed and highly qualified teachers offer great learning opportunities for our students.

Thank you for being involved in your child's education. Working together we can be sure that your child is successful—in school and in life!

Constellation Schools are "The Right Choice for Parents and a Real Chance for Children!"

Richard A. Lukich, Chairman
Constellation Schools LLC



Directors & Administrative Staff

Gerald Preseren

Executive Director

Elizabeth Long

Receptionist

Thomas Babb

Treasurer

Jean Sandler

Accounting Manager

Dee Crawford

Administrative Assistant-Finance

Susan Knurek

Administrative Assistant-Finance p.t.

Marilyn Kehn

Payroll p.t.

Marjorie Wagner

Budget Manager

Rebecca Novak

EMIS Manager

Karen Florian

Human Resource Manager

Amy Spears

Administrative Assistant

Lisa Vinarcik

Manager of Marketing & Public Relations

David Calco

Technology Coordinator

Gary Schaefer

Lisa Geyer

Randall Kufel

Shawnda Thombs

Lou Videc

David Colon

Technology Specialists

Roy Zeman

Coordinator of Educational Services

April Gunderman

Manager of Special Education

Becky Jordan

Elizabeth Bohman

Heather Zeman

Kevin Panek

Jillian Lukich

School Psychologists

Amanda Cell

Angela Harwood

Ashley Rabin

Jill Teresczuk

Jillian McQuerry

Speech & Language Pathologists

Frances Horvath

Karen Boose

Occupational Therapists



Jeffrey Soltis

Facilities Operations Manger

John Allen

Brian Preseren

Maintenance

Kimberly Stanislo

Supervisor of Health Services

Stephanie Chaffin

Malinda Miller

Julia Howerton

Rochelle Kirby

Albert Krosse

Lisa Stern

Elizabeth Claus

Mandy Wakim

School Nurses

Sharon Morgan

Coordinator of Staff & Professional Development

Marybeth Oko

Administrative Assistant

Sheila Woidke

Manager of Professional Development

Megan Lange

Supervisor of Teacher Mentoring

Adrienne Dancsok

Erin Towne

Kelly Koehler

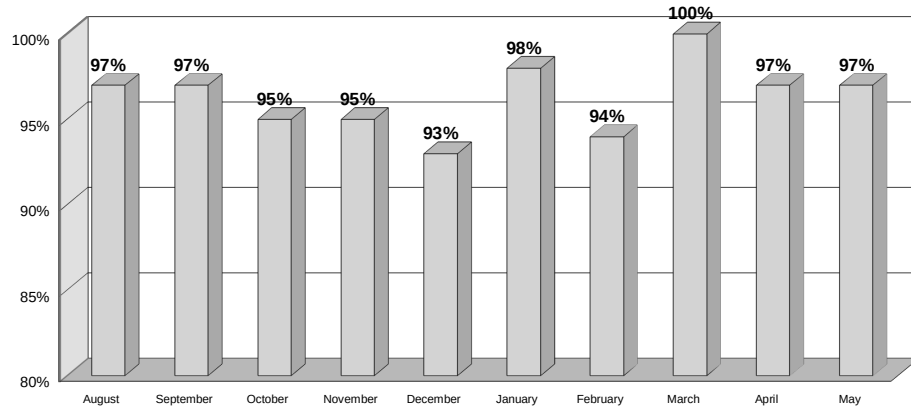
Laura Horvath

Teacher Coach



Westpark Community Elementary Staff & Board

2012-2013 Staff Monthly Attendance Percentage



Westpark Community Elementary Staff

Principal

Sheila Delzani

Admin. Assistants

Patricia Knaggs
Judy Sylvester

Kindergarten

Danielle Gearhart
Theresa Klobusnik
Leah Kucharczyk

1st Grade

Sarah Mooney
Ademetria Lett-Martin
Carolyn Smith

2nd Grade

Diane Dougherty
Christine Grovu
Kimberly Scott

3rd Grade

Heather Campbell
Jennifer Dukarm
Kelly Stout

4th Grade

Jennifer Koeth
Sharon Moore
Kiley Lindow

Music

Valerie Stewart

Phys Ed

Alison Morgan

Title 1

Tina Parente
Georgeta Serban
Suzannah Skinner

Bldg. Sub

Rebecca Trendell

Special Education

Cara Meadows

Aide

Amy Gonos
Jodi May
Danette Wolodzko
Michelle Sommerfelt

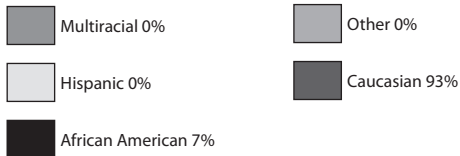
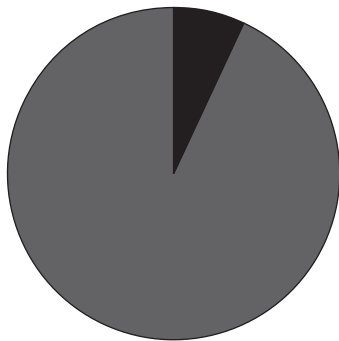
Food Service

Joyce Kristancic

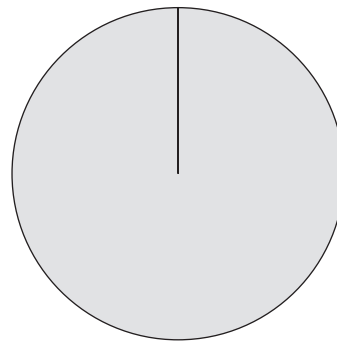
Cleaner

Sherrie Booze
Cyril Sako
Clifford Andrzejewski

Staff Demographics



Staff Gender



Westpark Community Elementary Board

President

Dan Ziemba

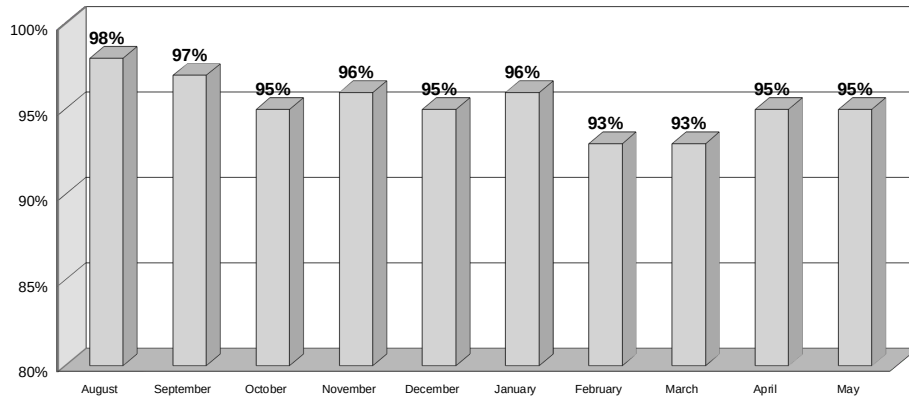
Members: Donna Stelter • Heidemarie Chernushin • Jerry Bednar

Jerry Hilinski



Student Enrollment, Attendance & Demographics

2012-2013 Student Monthly Attendance Percentage



About Our Students

Students at Westpark Community Elementary are enrolled on a first come, first served basis during the first two weeks of December. Those students who are currently enrolled are ensured a place for the following school year if they enroll during these two weeks. If more students apply than there are spots, a lottery is held and a waiting list is formed.

Student per Class/Teacher Ratio for the 2012-2013

24 Students : 1 Teacher maximum

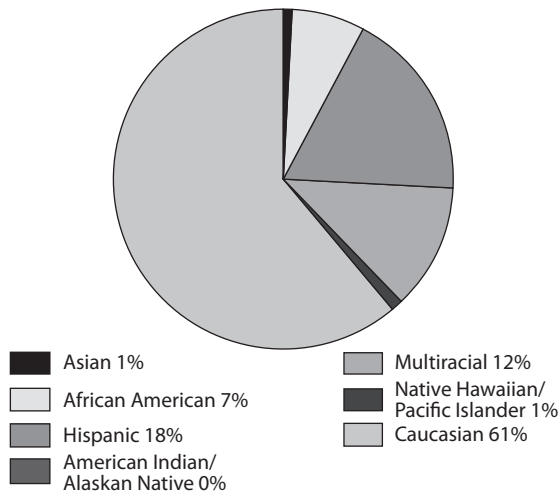
326 Students Enrolled

45% Eligible for Low Income

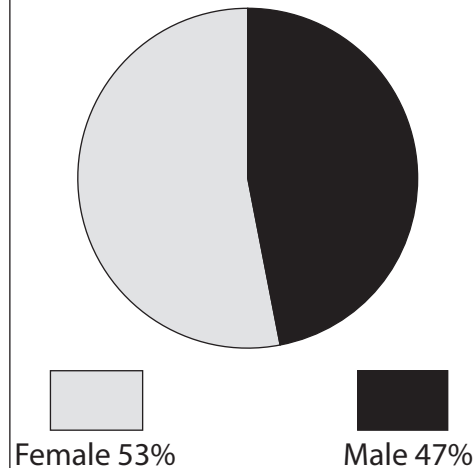
Demographics

- 1 % Asian
- 7 % African American
- 0 % American Indian/Alaskan Native
- 61 % Caucasian
- 18 % Hispanic
- 12 % Multiracial
- 1 % Native Hawaiian/Pacific Islander
- 0 % Other

Student Demographics



Student Gender



Home School Notification

The school is a public school and students enrolled in and attending the school are required to take achievement tests and other examinations prescribed by law. In addition, there may be other requirements for students at the school that are prescribed by law. Students who have been excused from the compulsory attendance law for the purpose of home education as defined by the Administrative code shall no longer be excused for that purpose upon their enrollment in a community school.



Educational Plans/Programs



Our curriculum is aligned with the Ohio Academic Content Standards and is designed to guide students toward their grade level goals. Content areas include: reading/language arts, spelling/phonics, math, science, social studies, art, music, physical education/health and computers. During the 2012-2013 academic year, all Constellation Schools utilized the Ohio Academic Content Standards to prepare our students for the Ohio Achievement Assessments in Grades 3-8 and the Ohio Graduation Test in Grade 10. With the state's adoption of the Common Core Standards in English language arts and math and newly revised science and social studies standards, teachers are preparing to make the necessary adjustments to our current curriculum in an effort to stay aligned with the state standards.

Title 1 services (small grouping with a reading/math teacher) and Special Education Services are implemented to assist students who qualify for special services. Numerous online programs are utilized as part of our Response to Intervention program in an effort to move children through the intervention pyramid. Furthermore, classroom instruction is enhanced through the use of technology in our computer labs, integrating classroom projects with such programs as word processing, power point presentations and internet research. Most of our classrooms are utilizing Smart Board Education and all of our schools are utilizing the latest in technology innovations. Currently, we are working with the Virtual Community School's branching program to offer Foreign Language to our high school students who meet the criteria at select Constellation Schools.

Teachers establish high academic measures for achievement and behavior in their classrooms. Through age appropriate teaching methods, all students will reach or exceed their maximum potential. The cornerstone of our academic program is our strong emphasis on Character Education. Character Education permeates throughout our curriculum. All of our classrooms and hallways have a variety of posters and bulletin boards that define acceptable character. Good behavior and appropriate manners from everyone is a constant expectation of our students and staff. Character Education enhances our educational plan while securing a safe and nurturing learning environment for all of our students.

Students were able to highlight their talents and skills with assorted programming throughout the year. The All Constellation Spelling Bee brought together the top spellers from each school in December. In January, the All Constellation Science Fair provides students with the opportunity to share various science projects. Sixty students continue their Science knowledge and participated in the CONSEF schools engineering and Science Fair, which included competition from 7 states. Many students from several of the Constellation Middle School participated in power of the Pen. This competition show cases the writing talents of our students. Finally, the All Constellation Band and Arts Festival in April provided our students studying instrumental music a chance to showcase their talents as well as the Art talent in several of our schools. Afterschool clubs are offered in a variety of our schools addressing such interests as: drama, basketball, comic books, reading and homework. All of these programs are organized and facilitated by staff who go above and beyond to provide our students with a well-rounded education rich with opportunities.



Professional Development

Constellation Schools are committed to quality professional development. Our Local Professional Development Committee (LPDC) follows all state requirements to renew teaching/principal certificates and licensures. Our professional renewal process ensures a close connection between renewal activities of the educators and classroom practices. The continued development and improvement of relevant and applicable professional pedagogical skills and knowledge are essential to the education process. Through professional development we can ensure that all students reach their full potential to contribute to a democratic society including maximizing each student's abilities and encouraging self-reflection and a lifelong love of learning.

Several professional development opportunities before the start of the school year were provided such as:

- Classroom Management
- Ohio Teacher/Principal Evaluations (OTES/OPES)
- Differentiated Instruction
- Formative Instructional Practices (FIP)
- Progress Book
- Standards Based Report Card
- Special Education Procedures
- Technology in the Classroom
- Curriculum
- Common Core Grade Level /Subject Area

Professional Development Coaches

The Professional Development Coach positions provide a framework of support, professional development, and standards based assessments and evaluations for all teachers. The coaches create an atmosphere for collaboration and teamwork in helping achieve the goals and objectives of each individual teacher.

Constellation Schools provided teachers with an opportunity to choose various professional development workshops to enhance their own professional growth. Such opportunities included:

- Grade Level Conferences
- Title One Conference
- Middle School Conferences
- Improving Reading and Math Instruction Workshops
- Smart Board Training
- Teacher Evaluation (OTES)
- Common Core Curriculum
- Formative Instructional Practices (FIP)
- Common Core Standards

Resident Educator Program

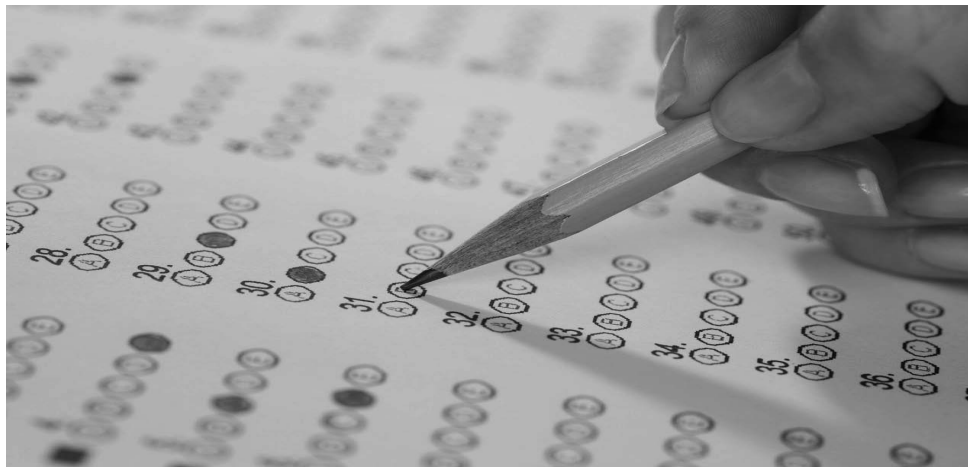
A four-year Resident Educator program of support and mentoring for new teachers will provide educators just entering the profession with quality mentoring and guidance essential for a long and flourishing career. Successful completion of the residency program will be required to qualify for a five-year professional educator license.

A full year program was provided to all first-year teachers. This program offered monthly meetings, support, and information that enhanced the first-year teacher's experience. Teacher Development Coaches were added to schools to work with Resident Educators throughout the school year. The coaches were available to the Resident Educators to serve as mentors within the school day. The first full year experience with a mentor provided the support needed as well as provided for individual needs for every first and second year teacher. The program continues throughout the resident educators license.



OAA - Ohio Achievement Assessments

STATE INDICATORS		PERCENTAGE OF STUDENTS AT AND ABOVE THE PROFICIENT LEVEL
		Constellation Schools: Westpark Community Elementary
3rd Grade Achievement		<i>The state requirement is 75 percent</i>
Reading		85.5
Mathematics		93.5
4th Grade Achievement		<i>The state requirement is 75 percent</i>
Reading		96.6
Mathematics		83.1



PERFORMANCE INDEX SCORE

The Performance Index Score reflects the achievement of every tested student. The score is a weighted average of all tested subjects in grades 3-8 and 10. The most weight is given to the advanced students (1.2), and the weights decrease for each performance level. This creates a scale of 0 to 120 points, with 100 being the goal. Looking at the Performance Index Score over time shows trends in school achievement.

Performance Index Score Over Time	2012-2013	2011-2012	2010-2011
	102.5	97.8	97.6



Parent Notification System

Constellation Schools knows how important it is to keep you up-to-date with school news and school happenings. We will be communicating to you through Ohio Alerts, a mass notification system. Please follow the directions below to sign up for this service. If you do not sign up, you will not be notified via email or text messaging. Please note if your email or cell phone number changes, you must update it through your Ohio Alert account.

All of Constellation Schools have implemented the Ohio Alerts notification system for parents.
To subscribe to your school's alerts, please enter the following link: <http://www.ohioalerts.org>

Click on Cuyahoga County (Constellation Schools Administrative office is located in Cuyahoga, regardless if your school is located in Lorain or Mansfield)
Click on Constellation Schools
Click on Subscribe to Alerts
Enter your full name
Click on either text or email- you will have to sign up twice if you would like both

To subscribe for text alerts:

- click on text
- enter your cell phone number with the area code
- click on your phone provider
- click on the school(s) you would like to receive text alerts from
- enter in the security code
- click the COPPA compliant
- click subscribe
- you will receive a text message from Alerts@constellationschools.com stating you have subscribed to receive text alerts

To subscribe to email alerts:

- click on email
- enter your email address
YOUR EMAIL MUST BE A HOTMAIL, GMAIL, SBCGLOBAL, MSN, ROADRUNNER, YAHOO AOL, OR ANY OTHER EMAIL, IT CAN NOT BE YOUR PHONE NUMBER @MMS.ATT.NET
DO NOT ENTER YOUR PHONE NUMBER AS THE EMAIL ADDRESS BECAUSE YOU WILL NOT RECEIVE THE ALERTS.
- click on the school(s) you would like to receive email alerts from
- enter in the security code
- click the COPPA compliant
- click subscribe
- you will receive an email message from Alerts@constellationschools.com stating you have subscribed to receive email alerts

After you are done subscribing, the link below is to access your personal Ohio Alerts account.
Please log in at: <http://www.ohioalerts.org/Login.aspx>

If you have any questions or need further assistance, please email or call Lisa Vinarcik, Manager of Marketing and PR at Vinarcik.lisa@constellationschools.com or 216-712-7600 extension 50107.



Technology



Using technology is an important part of life at Constellation Schools. We provide many technology tools to our students, to create a superior learning environment where they can explore new ways of working, delve into the practically unlimited encyclopedia of available knowledge, and understand the ways information is shared and problems are solved. Constellation recognizes the importance of learning in a safe environment, so we train our teachers to guide student learning, and back them up with a powerful set of filters and firewalls that keep our computer network focused on academic success.

We invest heavily into classroom technology, and are better equipped than most public schools. Nearly every classroom is outfitted with a large interactive board, where the teacher and students can view and manipulate information on a giant computer screen. Each SMART Board can be used to share an internet web quest with the entire class, or allow individual students to physically interact with digital objects on screen, moving, changing, writing, and drawing to get the point of the lesson. They make a fantastic big screen for videos from Discovery Streaming too! This is a subscription to a wealth of videos and lesson materials from The Discovery Channel. We subscribe because we know children today are "digital natives" who respond better and engage more when multimedia is used for teaching.



Constellation Schools are equipped with computer labs, either rooms or mobile laptop carts, where every child in class can participate in guided computer based instruction as a group. Some of our middle school classes are in a grant-funded 1-to-1 laptop program, where every student has their own laptop that can be used in any class as needed.



Constellation is always looking for the best tools to enrich our classrooms, and after many requests from our teachers and thorough evaluation, we have rolled out Student Response Systems (called "clickers"). Each student gets a clicker, like a small TV remote, and uses them to answer quick questions built into the lesson. This way every student gets the chance to answer every question, and the teacher instantly knows how many of the students "get it," and if she can move on or needs to spend more time on a topic. This really helps for children that might be a little shy about speaking up, but all the kids love using them. The instant data about student comprehension really helps the teacher fine tune the instruction.

Our teachers receive significant technology training, from after school workshops to big conferences. Constellation provides top quality training so our teachers are ready to use modern educational technology to its fullest advantage. Our teacher coaches are also tech savvy and assist other teachers with technology use in the classroom.

One thing we're sure about, technology isn't going away, it's becoming more complex all the time. From our Mission Statement to our individual students, we strive to ensure the success of every child in our advancing technological society.





Special Services

Constellation Schools has a commitment to provide a free and appropriate public education for children with disabilities in accordance with state and federal laws, rules, and regulations. In that endeavor, the Educational Support Services Department works to assist all of our schools in the following specialized areas: Special Education, Psychological Services, Speech and Language Services, School Health Services, Occupational Therapy Services, and Physical Therapy Services. Additionally, the Educational Support Services Department assists each of our schools in creating and maintaining their Response to Intervention Process, Grade Level Intervention Teams, writing Section 504 Plans and Title I support.

Psychological Services

Psychologists employed by Constellation Schools are Ohio Department of Education licensed and have specialized training in both psychology and education. They collaborate with parents and community agencies in order to coordinate services and interventions for students. They provide consultative services to educators and are members of the school-based intervention teams. School psychologists assist in assessment, eligibility, and program planning for students with disabilities as part of a range of special education services that Constellation Schools provides. Counseling may be delivered to special education students who demonstrate behavioral difficulties that impede their educational progress. Crisis intervention is also provided when necessary.

Speech & Language Services

Good communication skills are important for speaking, listening, reading, writing, and learning at school. Some students have communication difficulties that can interfere with their ability to understand and participate in classroom instruction and impair their relationships with teachers and other children. Students who are formally identified as having communication problems that adversely affect their education are eligible to receive speech and/or language services from a speech & language pathologist. Speech & language services can be provided in a variety of ways, depending on the student's needs. Collaboration with teachers is important to ensure the student's communication goals are integrated into the classroom.

School Health Services

Constellation Schools promotes health and wellness through a coordinated school health program. Our program focuses on collaboration between administrators, staff, families and the community to ensure that our students learn in a healthy school environment and obtain a state of health and wellness that will allow them to learn and achieve their maximum potential. School health services, one component of this coordinated school health program, is provided by professional school nurses. School nurses are committed to improving health outcomes, academic achievement, and life-long achievement for all students at Constellation Schools. To that end, the school nurses of Constellation Schools follow the Standards of School Nursing Practice (National Association of School Nurses) and the state and federal laws that govern health services in schools.



Occupational Therapy Services

School-based occupational therapy is available for students who are eligible for special education services. The profession of occupational therapy is concerned with a person's ability to participate in meaningful and purposeful daily life activities or "occupations." In the school setting, the role of

the occupational therapist is to help children perform important learning and school-related activities in order to fulfill their role as students. Occupational therapy services support a child's participation in occupations of daily living (dressing, eating, etc.), academic areas, play, leisure, and social interactions. As part of the educational team within a school setting, occupational therapists work closely with the student, parents, and educators to identify the skills of the student, the demands of the environment, and appropriate solutions for interventions based on each child's unique needs.



Constellation Schools Westpark Community Elementary Financial Report for Fiscal Year 2013

The Cash Basis Report of Revenues and Expenditures for the Year ended June 30, 2013 reflects the activities of Constellation Schools: Westpark Community Elementary during the year. The information provided below refers to this report and the accompanying graphs.

Highlights for the Year: ✓ 11th annual audit issued for 2012 with an “unqualified opinion” (best opinion available)

Revenues

The largest source of operating revenue (79%) comes from the State of Ohio School Foundation Program. This funding is earned at a base rate of \$5,653 for each student enrolled during the year. Additional funds are provided for the special needs of students, the poverty level of the community in which each student resides, and other adjustments.

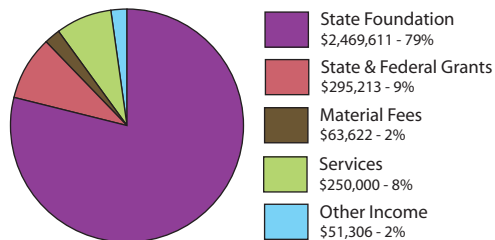
State and Federal Grants (9%) supplement school operations for specific purposes. The school received grants for Title I Intervention, Professional Development, Technology, Special Education, Child Nutrition Services, Race to the Top and Electronic Communications.

Materials Fees (2%) are collected from each student to provide consumable materials used during the year.

Services (8%) were provided to Constellation Schools: Westpark Community Middle for shared space and staff.

Other income (2%) includes interest earned on bank account activity, contributions and donations, lunch collections and other miscellaneous items.

Constellation Schools: **Westpark Community Elementary**
Cash Basis Revenues for the Year Ended June 30, 2013



Constellation Schools: Westpark Community Elementary Cash Basis Statement of Revenues and Expenditures for the Year ended June 30, 2013 (Unaudited)	
Beginning Cash - July 1, 2012	\$ 1,376,224
Revenues	
State Foundation	\$ 2,469,611
State & Federal Grants	\$ 295,213
Material Fees	\$ 63,622
Services	\$ 250,000
Other Income	\$ 51,306
Total Revenue	\$ 3,129,752
Expenditures	
Personnel	\$ 1,079,735
Retirement & Benefits	\$ 329,209
Purchased Services	\$ 1,348,622
Supplies & Materials	\$ 88,633
Capital Outlay	\$ 23,661
Other	\$ 41,409
Total Expenditures	\$ 2,911,269
Ending Cash - June 30, 2013	\$ 1,594,707

Additional Information

A more detailed set of financial statements may be obtained by calling (216)712-7600, writing to the Treasurer, Constellation Schools 5730 Broadview Road, Parma, Ohio 44134 or by e-mail at the following address: babb.thomas@constellationschools.com

During the fall of 2013 an audit of the school's financial records for the year ended June 30, 2013 will be completed. The audit report should be available during the winter at the above address and on the Auditor of State's website: www.auditor.state.oh.us.

Expenditures

Personnel services, combined with retirement and benefits, accounted for 48% of the expenditures for the year. These expenditures include principal, support staff, teachers, state retirement systems, employment taxes and health insurances.

Purchased services (46%) include expenditures for student support services (speech, psychologist, health, physical therapy and occupational therapy), contracted substitutes, field trips, professional development, management services, sponsor services, test scoring, data reporting, facility lease and operations, equipment leases, telephone, postage, travel, marketing, printing, food services and other services.

Supplies and materials (3%) include textbooks, instructional supplies, testing materials, office supplies, medical supplies, instructional software and maintenance supplies.

Capital Outlay (1%) includes purchases of equipment and furniture.

Other (2%) includes audit fees, insurances (property, liability, fidelity bond, directors & officers), dues and subscriptions and other miscellaneous.

Constellation Schools: **Westpark Community Elementary**
Cash Basis Expenditures for the Year Ended June 30, 2013

