



Mission, Vision, Value Statements & Slogans

Mission

Constellation Schools provides every child an opportunity to obtain an excellent education to ensure life long success.



Value

We believe all children deserve an exceptional education in a safe, caring, nurturing environment.

We will create a student focused community of learners where children excel, become responsible ethical citizens, and are prepared for success in career, college and life.

Organization Slogan

*The Right Choice for Parents
and a Real Chance for Children!*

Vision

Constellation Schools will create an exceptional learning community characterized by high expectations and academic excellence.

Our students will be actively engaged life-long learners and become responsible involved citizens.

Our families will support their children and school as important, welcomed members of our learning community.

Our teachers will be inspiring, compassionate and committed to the success of every student.

Our leaders will provide superior service, resources, and support to ensure the success of every student.

Our Board of Directors will guide our school in creating a culture of excellence that ensures the success of every student.

Character Education Slogan

*Remember
We all have Choices.
Choices have Consequences.
Be Smart and Make the Right Choice!*

Constellation Schools admits students of any race, color, national or ethnic origin, and will not discriminate on the basis of race, religion, color, national origin, disability, age or gender in the administration of its educational policies, admissions policies, hiring, and employee retention policies, scholarships and loan programs, and athletic and other school administered programs.



Constellation Schools & Its History

A Beginning

Constellation Schools evolved from the desire of a small group of individuals to open a Montessori school in Cleveland's Old Brooklyn neighborhood. After a lot of hard work and many community meetings held over the course of two years, a change in Ohio law establishing community schools (or "charter schools") led to the creation of Old Brooklyn Montessori School (OBCE). OBCE opened in August of 1998 with three employees and 27 students.

Expanding and Creating a Universal Appeal

The early successes of OBCE and the desire to improve public education, drove some of the original developers of OBCE to become more actively involved in Ohio's charter school movement. As a result, Richard Lukich, Gerald Preseren and Thomas Babb created Constellation Schools, a management organization, and worked together to develop proposals for additional community schools. Although they were pleased with the community support for OBCE and its Montessori curriculum, they recognized the challenges it presented in public education: difficulty finding quality Montessori trained and state certified teachers; the high cost of Montessori materials (about \$30,000 per classroom); and, the fact that a Montessori education does not appeal to everyone.

As a result, a more traditional curriculum utilizing a competency-based model was selected for OBCE and all new schools. To ensure the new schools stood out from existing public schools and the growing number of charter schools, a comprehensive character education (values) component was integrated throughout the curriculum, and small class sizes. The growth of the schools was tightly controlled, initially serving children in kindergarten through third grade and expanding to K-8 over a period of six years, to allow them to develop a sense of community. This slow growth also allows for a more selective process in hiring teachers, which ensures the development of a quality staff.

In 2000, Parma Community School became Constellation School's second school, and in 2001 three more schools opened: Westpark Community Elementary, Elyria Community Elementary and Lorain Community Elementary. Subsequent years brought additional growth with Puritas Community Elementary opening in 2003 and Madison Community Elementary and Stockyard Community Elementary in 2004.

In 2006, Old Brooklyn Community Middle, Westpark Community Middle, Lorain Community Middle, and Puritas Community Middle separated from their elementary school and became middle schools educating students in grades fifth through eighth. Outreach Academy for Children with Disabilities also opened in 2006 to serve students that are medically fragile. In 2007, Westside Community

School of the Arts, our first arts-based school, opened in Old Brooklyn, but a year later moved to the St. Philip & James school building in the Jefferson neighborhood in Cleveland. Since our middle school programs formed in 2006 the next school to emulate this program was Stockyard Community Middle educating students in grades seventh and eighth.

Constellation's growth is a steady progression that is determined by the community in which it is located. As a result, Elyria Community School expanded into a second building, the former Elyria City School - Eastgate building, to accommodate middle school students. Besides the expansion in Elyria, Collinwood Village Academy and Eastside Arts Academy opened for the 2011-2012 school year bringing Constellation's high quality education to Cleveland's east side for the first time. These two schools serve students in kindergarten through fifth grade and will follow Constellation's traditional growth model.

The Purpose of Constellation Schools

Constellation Schools is an umbrella management organization, providing business, administrative, educational and financial support services to its managed schools. This structure allows these overhead expenses to be spread over all the schools, reducing the financial burden on individual schools. With Constellation performing most of the administrative functions, the building principals and teachers are freed up to do what they do best - educate children. Administrative centralization also eliminates duplicative services at each school. This type of efficiency is often used in business to increase efficiency. Within Constellation, it serves to improve performance and accountability. As the schools benefit from administrative centralization, more resources are available for students and teachers, resulting in more opportunities for students and better schools.

Success of the Organization

In a little over fifteen years, Constellation Schools has grown from one school, 27 students, and 3 employees to seventeen schools educating more than 4,800 students and over 550 employees. A total of eleven buildings are owned by the schools which occupy them evidencing their acceptance within their communities and their financial strength.

Conclusion

The founders of Constellation have established a community of schools that benefit from outstanding participation and support from staff, students and parents. Constellation has developed a reputation for its high standards and dedicated teachers, and for delivering a quality educational program in a safe and pleasant environment.



Chairman's Message



The 2014/2015 school year was another exciting year for Constellation's schools in a number of areas including expanding facilities, increasing enrollment, and providing more extracurricular and outreach activities for students.

The groundbreaking for the middle school wing at Constellation Schools: Stockyard Community School was well attended and the new facility, when complete, will provide our middle school students with an enhanced learning environment and create a campus-like atmosphere with the elementary school. In addition to continued major renovations at our Constellation Schools: Parma Community High School building on West 54th Street in Parma, we completed the purchase of the St. Francis School building from the Catholic Diocese and will open our Intermediate School there during the 2015/2016 school year.

With enrollment at all of our schools continuing to grow, there has been a major push for our schools to partner with community resources. This not only maximizes resources available to our schools, but also enables our students to exercise many of the citizenship principles they are taught through the character education program. Our Elyria and Collinwood schools participated in programs with the Elyria City Public Library and the Little Free Library Organization, respectively, to ensure students had access to a variety of current and classic books. In addition, Elyria Middle School sponsored a "Dad's Literacy Night," where 150 fathers attended and engaged in literacy activities with their children. Similarly, Collinwood sponsored a "Father's Walk" where 50 fathers/brothers/grandfathers walked students to school and participated in literacy events.



Students at Constellation Schools: Westpark Elementary donated money to the Leukemia Foundation, and Madison students teamed up with the Elijah Jennings Nursing Home and visited with residents and provided cards and a musical program. The staff at Constellation Schools: Outreach continues to provide "Disability Awareness" programs for students of other Constellation schools that visit and participate in the "Holidays Around the World" program and the "Music and Art" show. The Stockyard schools participated in the Annual Community Clean Up Day and, cleaning up a three block area around the school and helping to collect nearly 10 tons of trash.

All of our schools continue to expand extracurricular activities. At Constellation Schools: Westpark Middle School students participated in several programs sponsored by NASA, including "Gain Traction on Mars," the "Rover Challenge," and the "Take Flight Challenge." The school also had student win the "Promising Young Talent Award" in the Power of the Pen competition, and had another student compete in the state-wide competition. Constellation Schools: Lorain Middle School initiated a student leadership program that not only offered students with a chance to expand their leadership skills but also resulted in expanded extracurricular opportunities.

Students at Constellation Schools: Westside Arts participated in a writing competition sponsored by one of our sponsors, Buckeye Community Hope Foundation, and won awards. They also created a character education-based video and won first place in the Constellation Spirit Video Competition. Students at Elyria took part in the Destination Imagination program and competed with thousands of other students throughout Northeast Ohio.

Our schools continue to provide a high quality education to our students and also continue to expand opportunities for students to participate in a variety of activities outside of academics. The Constellation basketball program continues to be a huge success again this year, with our Westpark Middle school winning the championship. In addition to expanding intramural sports, our schools also offered a variety of activities such as Student Council, and clubs, including: band, dance, fitness, spirit, art, choir, chess, Spanish, math, MineCraft, drama, cheerleading, photography, technology and literacy.



In addition to our focus on academics and individual student success, many of our schools are providing students with incredible opportunities to learn outside of the classrooms with field trips to Washington, D.C., as well as outdoor education classes.

Our dedicated, compassionate teachers and staff believe that every child deserves a high quality education, and that Constellation's community schools are:

The Right Choice for Parents and a Real Chance for Children.

~Richard A. Lukich, Chairman of Constellation Schools~



Directors & Administrative Staff

Rebecca Keeney
Executive Director

Elizabeth Long
Receptionist

Thomas Babb
Chief Financial Officer

Jean Sandler
Treasurer

Kathy Segatta
Accounting Manager

Marjorie Wagner
Budget Manager

Vicki Kerner
Administrative Assistant-Finance

Susan Knurek
Administrative Assistant-Finance p.t.

Marilyn Kehn
Payroll p.t.

Rebecca Novak
EMIS Manager

Kim Petonic
Director of Human Resources

Amy Spears
Administrative Assistant

Roy Zeman
Coordinator of Educational Services

April Gunderman
Manager of Special Education

Laura Horvath
Special Education Coach

Rebecca Jordan
Elizabeth Boham
Heather Zeman
Kevin Panek
Jillian Lukich
School Psychologists

Amanda Cell
Angela Harwood
Jillian McQuerry
Marie Rowinski
Jill Teresczuk
Speech & Language Pathologists

Frances Horvath
Karen Boose
Occupational Therapists

Lee DiSante
Kris Harvey
Julia Howerton
Amanda Mayle
Malinda Miller
Lisa Stern
Hibah Ahmad
Teresa Martin
School Nurses



Constellation Schools Board of Directors
L to R: **Thomas Babb, Rebecca Keeney and Richard Lukich**

David Calco
Technology Coordinator
Lisa Geyer
Lou Videc
David Colon
Technology Specialists

Brian Preseren
Facilities Operations Manger
John Allen
Garrick Lukich
Robert Koster
Maintenance

Lisa Vinarcik
Manager of Marketing & Public Relations

Sharon Morgan
Coordinator of Staff & Professional Development

Marybeth Oko
Administrative Assistant

Sheila Woidke
Manager of Professional Development

Kelly Koehler
Supervisor of Teacher Mentoring

Kimberly Jackson
Erin Towne
Professional Development Coach



List of Schools

Constellation Schools Grades K-4 **Old Brooklyn Community Elementary**

(1998)
Cherie Kaiser, Principal
4430 State Road, Cleveland, Ohio 44109
216.661.7888 • 216.661.5975 fax

Westpark Community Elementary

(2001)
Sheila Delzani, Principal
16210 Lorain, Cleveland, Ohio 44111
216.688.0272 • 216.688.0273 fax

Lorain Community Elementary

(2001)
Melisa Shady, Principal
1110 West 4th Street, Lorain, Ohio 44052
440.204.2130 • 440.204.2134 fax

Puritas Community Elementary

(2003)
Meg Colwell, Principal
15204 Puritas Avenue, Cleveland, Ohio
44135
216.688.0680 • 216.688.0609 fax

Constellation Schools Grades K-6 **Stockyard Community Elementary**

(2004)
Amber Steele, Principal
3200 West 65th Street, Cleveland, Ohio
44102
216.651.5143 • 216.651.9515 fax

Constellation Schools Grades K-5 **Collinwood Village Academy**

(2011)
Bethany Scott, Principal
716 East 156th Street, Cleveland, Ohio 44110
216.451.4022 • 216.451.4040 fax

Eastside Arts Academy

(2011)
Katherine Rybak, Principal
6700 Lansing Avenue, Cleveland, Ohio 44105
216.441.9830 • 216.441.9834 fax

Constellation Schools Grades K-8 **Elyria Community**

(2001)
Eric Fortuna, Principal
Elementary 300 North Abbe Road, Elyria, Ohio
44035
440.366.5225 • 440.366.6280 fax

Thomas Flood, Building Administrator
Middle 336 South Logan Street, Elyria, Ohio
44035

440.365.0390 • 440.365.0397 fax

Westside Community School of the Arts

(2007)
Deborah Rotolo, Principal
3727 Bosworth, Cleveland, Ohio 44111
216.688.1900 • 216.688.1902 fax

Madison Community Elementary

(2004)
Melissa Rice, Principal
2015 West 95th Street, Cleveland, Ohio 44102
216.651.5212 • 216.651.9040 fax

Constellation Schools Grades 5-8 **Old Brooklyn Community Middle**

(2006)
Karil Stohlman, Principal
4430 State Road, Cleveland, Ohio 44109
216.351.0280 • 216.661.5975 fax

Westpark Community Middle

(2006)
Mindy Kidd, Principal
16210 Lorain, Cleveland, Ohio 44111
216.251.7200 • 216.251.0355 fax

Puritas Community Middle

(2006)
Meg Colwell, Principal
15204 Puritas Avenue, Cleveland, Ohio
44135
216.251.1596 • 216.251.3540 fax

Lorain Community Middle

(2006)
Melisa Shady, Principal
1110 West 4th Street, Lorain, Ohio 44052
440.242.2023 • 440.204.2134 fax

Constellation Schools Grades 7-8 **Stockyard Community Middle**

(2010)
Amber Steele, Principal
3224 West 65th Street, Cleveland, Ohio
44102
216.961.5052 • 216.961.9227 fax

Constellation Schools Grades K-12 **Parma Community**

(2000)
Linda Geyer, Principal

Brian Belmont, Building Administrator
Parma Community Elementary– Day Drive
7667 Day Drive, Parma, Ohio 44129
440.888.5490 • 440.888.5890 fax

Gregory Cek, Building Administrator
Parma Community Pearl Road Elementary
6125 Pearl Road, Parma Heights, Ohio 44130
440.345.5960 • 440.882.6169 fax

Middle and High
5983 West 54th Street, Parma, Ohio 44129
440.845.2587 • 440.845.2834 fax

Outreach Academy

(2006)
Mary Wideman, Principal
9772 Diagonal Road, Mantua, Ohio 44255
330.274.2272 • 330.732.2575 fax





Parent Notification System

Constellation Schools knows how important it is to keep you up-to-date with school news and school happenings. We will be communicating to you through Ohio Alerts, a mass notification system. Please follow the directions below to sign up for this service. If you do not sign up, you will not be notified via email or text messaging. Please note if your email or cell phone number changes, you must update it through your Ohio Alert account.

All of Constellation Schools have implemented the Ohio Alerts notification system for parents.
To subscribe to your school's alerts, please enter the following link: <http://www.ohioalerts.org>

Click on Cuyahoga County (Constellation Schools Administrative office is located in Cuyahoga, regardless if your school is located in Lorain or Mansfield)
Click on Constellation Schools
Click on Subscribe to Alerts
Enter your full name
Click on either text or email- you will have to sign up twice if you would like both

To subscribe for text alerts:

- click on text
- enter your cell phone number with the area code
- click on your phone provider
- click on the school(s) you would like to receive text alerts from
- enter in the security code
- click the COPPA compliant
- click subscribe
- you will receive a text message from Alerts@constellationschools.com stating you have subscribed to receive text alerts

To subscribe to email alerts:

- click on email
- enter your email address
YOUR EMAIL MUST BE A HOTMAIL, GMAIL, SBCGLOBAL, MSN, ROADRUNNER, YAHOO AOL, OR ANY OTHER EMAIL, IT CAN NOT BE YOUR PHONE NUMBER @MMS.ATT.NET
DO NOT ENTER YOUR PHONE NUMBER AS THE EMAIL ADDRESS BECAUSE YOU WILL NOT RECEIVE THE ALERTS.
- click on the school(s) you would like to receive email alerts from
- enter in the security code
- click the COPPA compliant
- click subscribe
- you will receive an email message from Alerts@constellationschools.com stating you have subscribed to receive email alerts

After you are done subscribing, the link below is to access your personal Ohio Alerts account.
Please log in at: <http://www.ohioalerts.org/Login.aspx>

If you have any questions or need further assistance, please email or call Lisa Vinarcik, Manager of Marketing and PR at Vinarcik.lisa@constellationschools.com or 216-712-7600 extension 50107.



Educational Plans/Programs

Our curriculum is aligned with the Ohio Academic Content Standards and is designed to guide students toward their grade level goals. Content areas include: reading/language arts, math, science, social studies, art, music, physical education/health and computers. During the 2014-2015 academic year, all Constellation Schools utilized the Ohio Academic Content Standards to prepare our students for the Ohio Achievement Assessments in Grades 3-8 and the Ohio Graduation Test in Grade 10. With the state's adoption of the Common Core Standards in English language arts and math and newly revised science and social studies standards, teachers prepared students for the new PARCC and AIR assessments for grades 3-12. Teachers made the necessary adjustments to our current curriculum in an effort to stay aligned with the state standards.

Title 1 services (small grouping with a reading/math teacher) and Special Education Services are implemented to assist students who qualify for special services. Numerous online programs are utilized as part of our Response to Intervention program in an effort to move children through the intervention pyramid. Furthermore, classroom instruction is enhanced through the use of technology in our computer labs, integrating classroom projects with such programs as word processing, power point presentations and internet research. Most of our classrooms are utilizing Smart Board Education and all of our schools are utilizing the latest in technology innovations.



Teachers establish high academic measures for achievement and behavior in their classrooms. Through age appropriate teaching methods, all students will reach or exceed their maximum potential. The cornerstone of our academic program is our strong emphasis on Character Education. Character Education permeates throughout our curriculum. All of our classrooms and hallways have a variety of posters and bulletin boards that define acceptable character. Good behavior and appropriate manners from everyone is a constant expectation of our students and staff. Character Education enhances our educational plan while securing a safe and nurturing learning environment for all of our students.



Students were able to highlight their talents and skills with assorted programming throughout the year. The All Constellation Spelling Bee brought together the top spellers from each school in December. In January, the All Constellation Science Fair provides students with the opportunity to share various science projects. Thirty Three students continued their Science knowledge and participated in the CONSEF schools engineering and Science Fair, which included competition from 7 states. Many students from several of the Constellation Middle School participated in power of the Pen. This competition show cases the writing talents of our students. Finally, the All Constellation Band and Arts Festival in May provided our students studying instrumental music a chance to showcase their talents as well as the Art talent in several of our schools. Afterschool clubs are offered in a variety of our schools addressing such interests as: drama, basketball, comic books, reading and homework. All of these programs are organized and facilitated by staff who go above and beyond to provide our students with a well-rounded education rich with opportunities.



Professional Development

Constellation Schools are committed to quality professional development. Our Local Professional Development Committee (LPDC) follows all state requirements to renew teaching/principal certificates and licensures. Our professional renewal process ensures a close connection between renewal activities of the educators and classroom practices. The continued development and improvement of relevant and applicable professional pedagogical skills and knowledge are essential to the education process. Through professional development we can ensure that all students reach their full potential to contribute to a democratic society including maximizing each student's abilities and encouraging self-reflection and a lifelong love of learning.

Several professional development opportunities before the start of the school year were provided such as:

- Classroom Management
- Ohio Teacher/Principal Evaluations (OTES/OPES)
- Differentiated Instruction
- Formative Instructional Practices (FIP)
- Progress Book
- Standards Based Report Card
- Special Education Procedures
- Technology in the Classroom
- Curriculum
- Technology
- Data Director



Professional Development Coaches

The Professional Development Coach positions provide a framework of support, professional development, and standards based assessments and evaluations for all teachers. The coaches create an atmosphere for collaboration and teamwork in helping achieve the goals and objectives of each individual teacher.

Constellation Schools provided teachers with an opportunity to choose various professional development workshops to enhance their own professional growth. Such opportunities included:

- Grade Level / Subject Specific Content Standards
- Middle School Conferences
- Improving Reading and Math Instruction Workshops
- Smart Board Training
- Teacher Evaluation (OTES)
- Common Core Curriculum . Common Core Standards
- Formative Instructional Practices (FIP)
- Data Director Training /Analyzing Data and Creating Assessments

Resident Educator Program

A four-year Resident Educator program of support and mentoring for new teachers will provide educators just entering the profession with quality mentoring and guidance essential for a long and flourishing career. Successful completion of the residency program will be required to qualify for a five-year professional educator license.



A full year program was provided to all first-year teachers. This program offered monthly meetings, support, and information that enhanced the first-year teacher's experience. Teacher Development Coaches were added to schools to work with Resident Educators throughout the school year. The coaches were available to the Resident Educators to serve as mentors within the school day. The first full year experience with a mentor provided the support needed as well as provided for individual needs for every first and second year teacher. The program continues throughout the resident educators license.



Special Services

Constellation Schools has a commitment to provide a free and appropriate public education for children with disabilities in accordance with state and federal laws, rules, and regulations. In that endeavor, the Educational Support Services Department works to assist all of our schools in the following specialized areas: Special Education, Psychological Services, Speech and Language Services, School Health Services, Occupational Therapy Services, and Physical Therapy Services. Additionally, the Educational Support Services Department assists each of our schools in creating and maintaining their Response to Intervention Process, Grade Level Intervention Teams, writing Section 504 Plans and Title I support.

Psychological Services

Psychologists employed by Constellation Schools are Ohio Department of Education licensed and have specialized training in both psychology and education. They collaborate with parents and community agencies in order to coordinate services and interventions for students. They provide consultative services to educators and are members of the school-based intervention teams. School psychologists assist in assessment, eligibility, and program planning for students with disabilities as part of a range of special education services that Constellation Schools provides. Counseling may be delivered to special education students who demonstrate behavioral difficulties that impede their educational progress. Crisis intervention is also provided when necessary.

Speech & Language Services

Good communication skills are important for speaking, listening, reading, writing, and learning at school. Some students have communication difficulties that can interfere with their ability to understand and participate in classroom instruction and impair their relationships with teachers and other children. Students who are formally identified as having communication problems that adversely affect their education are eligible to receive speech and/or language services from a speech & language pathologist. Speech & language services can be provided in a variety of ways, depending on the student's needs. Collaboration with teachers is important to ensure the student's communication goals are integrated into the classroom.

School Health Services

Constellation Schools promotes health and wellness through a coordinated school health program. Our program focuses on collaboration between administrators, staff, families and the community to ensure that our students learn in a healthy school environment and obtain a state of health and wellness that will allow them to learn and achieve their maximum potential. School health services, one component of this coordinated school health program, is provided by professional school nurses. School nurses are committed to improving health outcomes, academic achievement, and life-long achievement for all students at Constellation Schools. To that end, the school nurses of Constellation Schools follow the Standards of School Nursing Practice (National Association of School Nurses) and the state and federal laws that govern health services in schools.



Occupational Therapy Services

School-based occupational therapy is available for students who are eligible for special education services. The profession of occupational therapy is concerned with a person's ability to participate in meaningful and purposeful daily life activities or "occupations." In the school setting, the role of the occupational therapist is to help children perform important learning and school-related activities in order to fulfill their role as students. Occupational therapy services support a child's participation in occupations of daily living (dressing, eating, etc.), academic areas, play, leisure, and social interactions. As part of the educational team within a school setting, occupational therapists work closely with the student, parents, and educators to identify the skills of the student, the demands of the environment, and appropriate solutions for interventions based on each child's unique needs.



Technology



Using technology is an important part of life at Constellation Schools. We provide many technology tools to our students, to create a superior learning environment where they can explore new ways of working, delve into the practically unlimited encyclopedia of available knowledge, and understand the ways information is shared and problems are solved. Constellation recognizes the importance of learning in a safe environment, so we train our teachers to guide student learning, and back them up with a powerful set of filters and firewalls that keep our computer network focused on academic success.

We invest heavily into classroom technology, and are better equipped than most public schools. Nearly every classroom is outfitted with a large interactive board, where the teacher and students can view and manipulate information on a giant computer screen. Each SMART Board can be used to share an internet web quest with the entire class,



or allow individual students to physically interact with digital objects on screen, moving, changing, writing, and drawing to get the point of the lesson. They make a fantastic big screen for videos from Discovery Streaming too! This is a subscription to a wealth of videos and lesson materials from The Discovery Channel. We subscribe because we know children today are "digital natives" who respond better and engage more when multimedia is used for teaching.

Constellation Schools are equipped with computer labs, either rooms or mobile laptop carts, where every child in class can participate in guided computer based instruction as a group. Some of our middle school classes are in a grant-funded 1-to-1 laptop program, where every student has their own laptop that can be used in any class as needed, and we are working to roll out 1-to-1 laptops for every student in 2nd through 12th grade.



Our teachers receive significant technology training, from after school workshops to big conferences. Constellation provides top quality training so our teachers are ready to use modern educational technology to its fullest advantage. Our teacher coaches are also tech savvy and assist other teachers with technology use in the classroom.

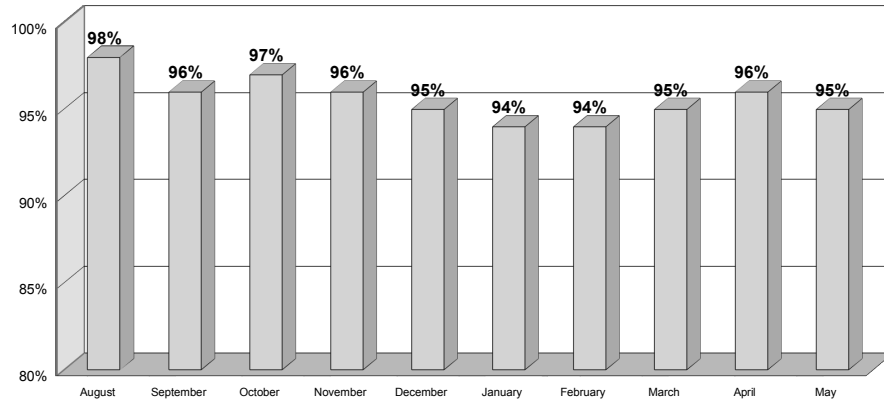
One thing we're sure about, technology isn't going away, it's becoming more complex all the time. From our Mission Statement to our individual students, we strive to ensure the success of every child in our advancing technological society.





Student Enrollment, Attendance & Demographics

2014-2015 Student Monthly Attendance Percentage



About Our Students

Students at Old Brooklyn Community Middle are enrolled on a first come, first served basis during the first two weeks of December. Those students who are currently enrolled are ensured a place for the following school year if they enroll during these two weeks. If more students apply than there are spots, a lottery is held and a waiting list is formed.

Student per Class/Teacher Ratio for the 2014-2015

24 Students : 1 Teacher maximum

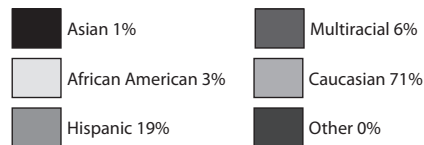
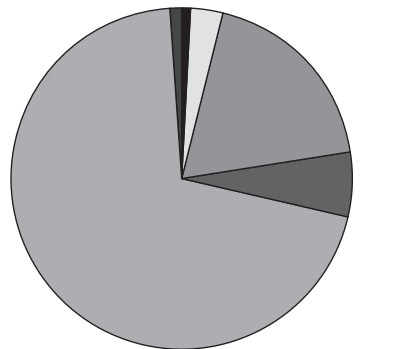
203 Students Enrolled

43% Eligible for Low Income

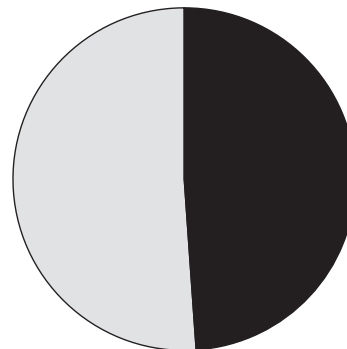
Demographics

- 1 % Asian
- 3 % African American
- 71% Caucasian
- 19% Hispanic
- 6 % Multiracial
- 0 % Other

Student Demographics



Student Gender



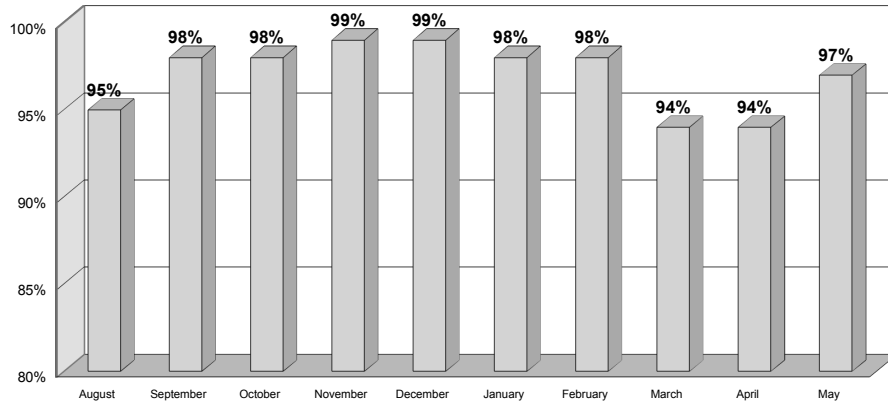
Home School Notification

The school is a public school and students enrolled in and attending the school are required to take achievement tests and other examinations prescribed by law. In addition, there may be other requirements for students at the school that are prescribed by law. Students who have been excused from the compulsory attendance law for the purpose of home education as defined by the Administrative code shall no longer be excused for that purpose upon their enrollment in a community school.



Old Brooklyn Community Middle Staff & Board

2014-2015 Staff Monthly Attendance Percentage



Old Brooklyn Community Middle Staff

Principal

Kani Stohlman

Admin. Assistant

Genevieve Stilla

5/6 Grade

Megan Cooke 5 Math
 Allesandra Jiamboi 6 Math
 Sarah Jones 5/6 Social Studies
 Elaine Thiery 5 Language Arts
 Katie Wirtz 6 Language Arts
 William Utt 5/6 Sci

7/8 Grade

Walter Cerrato 7/8 SS
 Elliott Koch 7/8 Sci
 Jeffrey Logan 7/8 Math
 Stephanie Williams 7/8 LA

Music Education

Anna Deitsch
 Chris Zanella

Band

Coralee Skoch

Physical Education

Brett Koch

Title 1

Holly Babb

Building Substitute

Judy Schumann

Special Education

Mary Beth Bennett
 Stevanna Greenwood

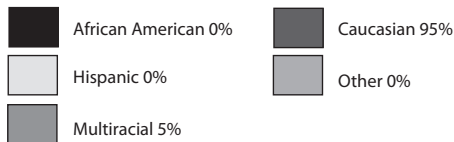
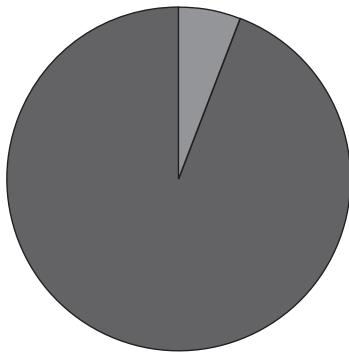
Nurse

Amanda Mayle

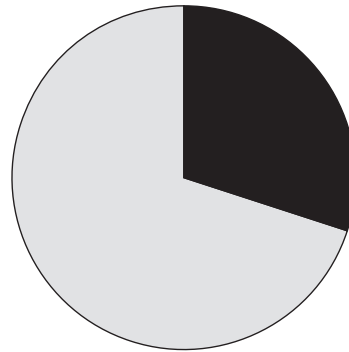
Building Cleaner

Ganna Mykyleychuk

Staff Demographics



Staff Gender



Old Brooklyn Community Middle Board Members

President

Debbie Callen

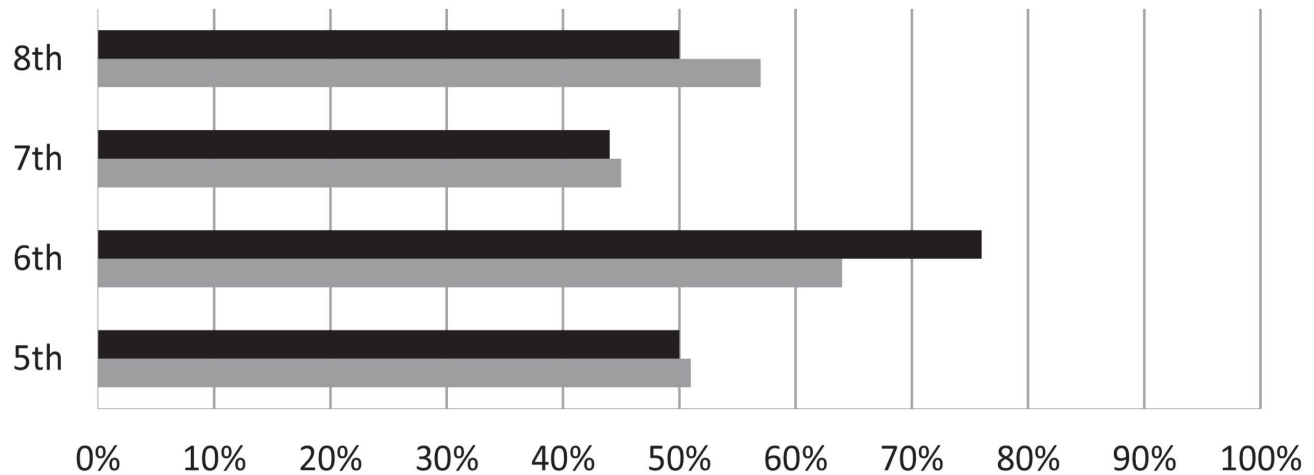
Members: Laura Trivison • Rand Laycock • Robert Anazalone
 James Tortelli



Iowa Assessments

Spring 2015 Iowa Assessments National Percentile Rank

The Iowa Assessments from Houghton Mifflin Harcourt – Riverside, the assessment division of HMH, measures student achievement and growth across a continuum of next generation learning standards, including Common Core.



	5th	6th	7th	8th
■ Mathematics	50%	76%	44%	50%
■ English Language Arts	51%	64%	45%	57%

The Ohio Department of Education will publish the 2015 School Report Card in January 2016.
 Why the delay in publishing the 2015 Ohio School Report Card? Typically, the department issues the Ohio School Report Card in late August or early September for the previous school year.
 This is a one-time delay in communicating results due to the transition to new state tests in English language arts, mathematics, science and social studies. Ohio will resume its typical release schedule with the 2016 Ohio School Report Card for the 2015-2016 school year.
 How does this impact my district or school? Recent changes in Ohio school law extend the time districts and schools have before they are accountable for all measures on the Ohio School Report Card. There will not be an overall grade for a district or school until 2018.
<http://education.ohio.gov/Topics/Data/News/State-Board-Sets-State-Percentages-for-2015-Ohio-S>

Sponsor's Legal Compliance Assessment: Per requirements in Ohio Revised Code 3314.03(D)(2), as the Sponsor of Old Brooklyn Community Middle, Buckeye Community Hope Foundation monitored and evaluated the academic, fiscal, organizational and operational performance of Old Brooklyn Community Middle for the 2014-2015 school year, and found the school to be substantially compliant and determined the school to be educating its students in a manner consistent with the school's mission.



Constellation Schools Old Brooklyn Community Middle Financial Report for Fiscal Year 2015

The Cash Basis Report of Revenues and Expenditures for the Year ended June 30, 2015 reflects the activities of Constellation Schools: Old Brooklyn Community Middle during the year. The information provided below refers to this report and the accompanying graphs.

Highlights for the Year: ✓ 9th annual audit issued for 2014 with an “unqualified opinion” (best opinion available)

Revenues

The largest source of operating revenue (80%) comes from the State of Ohio School Foundation Program. This funding is earned at a base rate of \$5,800 for each student enrolled during the year. Additional funds are provided for the special needs of students, the poverty level of the community in which each student resides, and other adjustments.

State and Federal Grants (8%) supplement school operations for specific purposes. The school received grants for Title I Intervention, Professional Development, Special Education, Race to the Top and Electronic Communications. Casino tax proceeds are also included in this category.

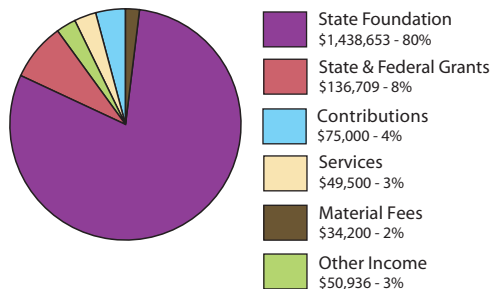
Contributions (4%) are collected from companies and individuals and from fundraising activities.

Services (3%) were provided to Constellation Schools: Parma Community, Madison Community, Stockyard Community, and Collinwood Village Academy for shared staff services.

Materials Fees (2%) are collected from each student to provide consumable materials used during the year.

Other income (3%) includes school activities school lunch collections and other miscellaneous items.

Constellation Schools: **Old Brooklyn Community Middle**
Cash Basis Revenues for the Year Ended June 30, 2015



Constellation Schools: Old Brooklyn Community Middle Cash Basis Statement of Revenues and Expenditures for the Year ended June 30, 2015 (Unaudited)

Beginning Cash - July 1, 2014	\$ 154,662
Revenues	
State Foundation	\$ 1,438,653
State & Federal Grants	\$ 136,709
Contributions	\$ 75,000
Services	\$ 49,500
Material Fees	\$ 34,200
Other Income	\$ 50,936
Total Revenue	\$ 1,784,999
Expenditures	
Personnel	\$ 632,176
Retirement & Benefits	\$ 194,535
Purchased Services	\$ 824,997
Supplies & Materials	\$ 62,813
Capital Outlay	\$ 9,895
Other	\$ 41,278
Total Expenditures	\$ 1,765,695
Ending Cash - June 30, 2015	\$ 173,966

Additional Information

A more detailed set of financial statements may be obtained by calling (216)712-7600, writing to the Treasurer, Constellation Schools 5730 Broadview Road, Parma, Ohio 44134 or by e-mail at the following address: sandler.jean@constellationschools.com.

During the fall of 2015 an audit of the school's financial records for the year ended June 30, 2015 will be completed. The audit report should be available during the winter at the above address and on the Auditor of State's website: www.auditor.state.oh.us.

Expenditures

Personnel services, combined with retirement and benefits, accounted for 47% of the expenditures for the year. These expenditures include principal, support staff, teachers, state retirement systems, employment taxes and health insurances.

Purchased services (47%) include expenditures for student support services (speech, psychologist, health and occupational therapy), contracted substitutes, special education services, field trips, professional development, management services, sponsor services, test scoring, data reporting, facility operations, equipment leases, telephone, postage, travel, marketing, printing, food services, and other services.

Supplies and materials (3%) include textbooks, instructional supplies, testing materials, office supplies, medical supplies, instructional software and maintenance supplies.

Capital Outlay (1%) includes purchases of equipment and furniture.

Other (2%) includes audit fees, insurances (property, liability, fidelity bond, directors & officers), dues and subscriptions and other miscellaneous.

Constellation Schools: **Old Brooklyn Community Middle**
Cash Basis Expenditures for the Year Ended June 30, 2015

