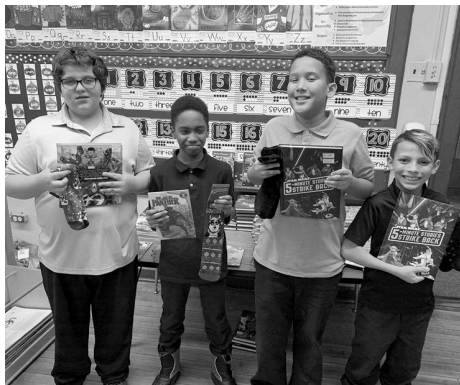




Mission, Vision, Value Statements & Slogans

Mission

Constellation Schools provides every child an opportunity to obtain an excellent education built on a foundation of character education for life long success.



Value

We believe all children deserve an exceptional education in a safe, caring, nurturing environment.

We will create a student focused community of global learners where children excel, are responsible, ethical world citizens, prepared for success in career, college and life.

Organization Slogan

*The Right Choice for Parents
and a Real Chance for Children!*

Vision

Constellation Schools will create an exceptional learning community characterized by high expectations and academic excellence.

Our students will be actively engaged life-long global learners and be responsible, compassionate involved world citizens.

Our families will support their children and school as important, welcomed members of our diverse learning community.

Our teachers will be inspiring, compassionate and committed to the success of every student.

Our leaders will provide superior service, resources, and support to engage the community and ensure the success of every student.

Our Board of Directors will guide our school in creating a culture of excellence that ensures the success of every student.

Character Education Slogan

Remember

We all have Choices.

Choices have Consequences.

Be Smart and Make the Right Choice!



Constellation Schools & Its History

A Beginning

Constellation Schools evolved from the desire of a small group of individuals to open a Montessori school in Cleveland's Old Brooklyn neighborhood. After a lot of hard work and many community meetings held over the course of two years, a change in Ohio law establishing community schools (or "charter schools") lead to the creation of Old Brooklyn Montessori School (OBCE). OBCE opened in August of 1998 with three employees and 27 students.

The Purpose of Constellation Schools

Constellation Schools is an umbrella management organization, providing business, administrative, educational and financial support services to its managed schools. This structure allows these overhead expenses to be spread over all the schools, reducing the financial burden on individual schools. With Constellation performing most of the administrative functions, the building principals and teachers are freed up to do what they do best – educate children. Administrative centralization also eliminates duplicative services at each school. This type of efficiency is often used in business to increase efficiency. Within Constellation, it serves to improve performance and accountability. As the schools benefit from administrative centralization, more resources are available for students and teachers, resulting in more opportunities for students and better schools.

Success of the Organization

Since 1998, Constellation Schools has grown from one school, 27 students, and 3 employees to fifteen schools educating more than 4,500 students and over 550 employees. A total of eleven buildings are owned by the schools which occupy them evidencing their acceptance within their communities and their financial strength.

Conclusion

The founders of Constellation have established a community of schools that benefit from outstanding participation and support from staff, students and parents. Constellation has developed a reputation for its high standards and dedicated teachers, and for delivering a quality educational program in a safe and pleasant environment.

Constellation Schools

THE RIGHT CHOICE FOR PARENTS AND A REAL CHANCE FOR CHILDREN

What makes Constellation Schools unique? We offer parental choice when it comes to selecting a school that offers quality education for your child in a safe environment. This is complimented by small class size, the integration of technology offering every child in grades 2 - 12 personal laptops, a foundation of character education and compassionate staff committed to the high academic success of our students.

Constellation Schools enters its 23rd year of educating children in neighborhood schools. "While our highly qualified teachers focus on specific educational needs, getting to know the whole child is a responsibility every employee takes seriously. Our efforts are focused on preparing all students to be ethical world citizens prepared for success in career, college and life! It is a privilege to serve our families, and we welcome the opportunity to become partners in the education of your child!"



-Rebecca Keeney,
Constellation Schools Executive Director



Chairman's Message

The 2019/2020 school year was an unusual and challenging year and I want to thank everyone for your cooperation and perseverance. Actually, it seems like the 2019/2020 school year was two separate school years. The first, a traditional year with students and teachers in their classrooms. The second, a forced experiment in remote students learning through a mix of technology and more traditional resources. Our teachers were amazing as they were forced to change from a traditional classroom setting to using multiple mediums to communicate with students and parents. Parents were outstanding partners as we traversed this uncharted territory created by COVID-19. Staff and administrators have worked tirelessly to support our teachers and students. Despite the difficulties and multitude of challenges our schools faced this year, there is still much to celebrate.



Despite all the challenges, Constellation schools were successful in expanding opportunities for students and taking advantage of community resources. There were many field trip opportunities for students and our schools continued to promote extracurricular activities such as Guitar, Fitness and Art Clubs at Constellation Schools: Eastside Arts. Many of our schools participated in the basketball and volleyball intermural programs, with the Bulldogs of Constellation Schools: Lorain Community going undefeated for the volleyball season. Unfortunately, the basketball season was cut short. Community resources engaged with our schools included Junior Achievement at Constellation Schools: Puritas Community (for the 14th year); Guidestone, Bellefaire, Applewood and Ronald McDonald Mobile Dentist at numerous schools; Constellation Schools: Old Brooklyn Elementary partnered with the Cleveland Clinic and implemented the "Health Unleashed Program" and Constellation Schools; Parma Community partnered with Vitalant to sponsor blood drives and Constellation Schools: Elyria Community raised \$1,500 for the Leukemia and Lymphoma Society. The school year also saw many of our schools actively engage to assist their communities through food and clothing drives, assisting families in need, and providing coats, boots, gloves, hats and

food to students.

Some other highlights for the school year include Constellation Schools: Westpark Community Elementary being rated the #1 charter school in the Greater Cleveland area, and #2 in the State of Ohio by **niche.com**. The school was also awarded the 2019 High Progress School of Honor by the Ohio Department of Education; an award that is bestowed upon schools that have ranked in the 90th percentile statewide in Math and English Language Arts for five years or more. Westpark Community Elementary has achieved the Highest Outstanding Overall grade of "A" on the state report card for two years in a row and was awarded the US Department of Education 2020 Exemplary High Performing Blue Ribbon School award. Constellation Schools: Elyria Community Elementary was named a Community School of Quality by the Ohio Department of Education for the 2019/2020 school year. This award acknowledges charter schools that have a higher performance index and higher academic progress than the surrounding school district. Constellation Schools: Westside School of the Arts winning the 1st Place School wide Award for the Midwest Charter Schools K-5 Art Contest and having the 4th and 5th grade winners in the Buckeye Hope Writing Challenge. Constellation Schools: Stockyard Community received the Momentum Award and was designated a High Progress School of Honor by the Ohio Department of Education.



As you can see, there are many great things happening in our Constellation schools. Great teachers and great administrators and staff continue to make Constellation's schools...The Right Choice for Parents and a Real Chance for Children!

Richard A. Lukich, President
Constellation Schools LLC



Directors & Administrative Staff

Rebecca Keeney
Executive Director

Elizabeth Long
Receptionist

Marybeth Oko
Executive Assistant & Compliance Coordinator

Caroline Zito
Treasurer

Gayle Gilmore
Assistant Treasurer

Lori Wyrock
Accounting Specialist

Connie Britton
David Culler
Lisa Gretchen
Accounts Payable Specialist

Kim Petonic
Director of Human Resources

Kristin Mitchell
Human Resource Generalist

Jennifer Alter
Erin McDonnell
Payroll Practitioner

Cassandra Horwedel
Payroll/HR Assistant

Lisa Vinarcik
Manager of Marketing & Public Relations

Gary Vojtush
New Leadership Mentor

Brian Preseren
Business & Safety Manger

Garrick Lukich
Facilities Manager

Jeff Morris
Maintenance Supervisor

Dan Doehr
Justin Reffert
Salvatore Tagliarini
Maintenance Technician

Ronald Tomola
Maintenance Supervisor

Andrea Yurick
Manager of School Data, Records & Food Service Operations

Dominic Robinson
Assistant Manager of School Data, Records & Food Service Operations

Tiffany Miller
Administrative Assistant of School Data, Records & Food Service Operations

Julia Howerton
School Nurse Program Coordinator

Teresa Martin
School Nurse

Hibah Ahmad
Lee DiSante
Jennifer Gawelek
Amanda Siegel
Malinda Miller
Nurses

Christine Garten
Curriculum Manager

Jessica Andrus
Title I Coach

Jillian Lukich
Support Services Program Coordinator

Katherine Violette
Heather Skebo
Suzanne Davis
David Tucker
School Psychologists

Phebe Crouch
Jennifer Hall
Chris O'Connell
Marie Madej
Jill Kidwell
Stephanie Udovich
Speech & Language Pathologists

Calli Elber
Frances Horvath
Kristen Pitsenbarger
Occupational Therapists

Laura Horvath
Special Education Program Coordinator

April Gunderman
Julie Jones
Special Education Coach

Dawn Leko
Amanda McCall
Kathryn Reye
Nurses

Brian Knight
Education Program Coordinator

Joyce Lewis
Professional Development Program Coordinator

Tonya Atha
Erin Boron
Lauren DiFranco
Cera Flynn
Elena Kucharski
Allison Lentz
Professional Development Coach

Laura Survance
Technology Coordinator

Lisa Geyer
Webmaster & Accounts Administrator

Fred Freeman
Systems Administrator

David Colon
Jessenia Diaz
Field Technician II

Jeremy Daley
James Nolan
Garin Bailey
Benjamin Orr
Matthew Reyes
Field Technician

Connie Fasig
Bryan Jasinski
Ryan Kuschmeader
Amy Mazur
Claire Stepan
Sarah Filimon
Technology Integration Coach



List of Schools

Constellation Schools Grades K-4
Old Brooklyn Community Elementary
 (1998)
 Cherie Kaiser, Principal
 Kristina Scott, Assistant Principal
 4430 State Road, Cleveland, Ohio 44109
 216.661.7888 • 216.661.5975 fax

Westpark Community Elementary
 (2001)
 Sheila Delzani, Principal
 16210 Lorain, Cleveland, Ohio 44111
 216.688.0272 • 216.688.0273 fax

Lorain Community Elementary
 (2001)
 Maureen Millett, Principal
 Jordan McHugh, Assistant Principal
 1110 West 4th Street, Lorain, Ohio 44052
 440.204.2130 • 440.204.2134 fax

Puritas Community Elementary
 (2003)
 Deborah Piazza, Principal
 Victoria Dela Cuesta, Assistant Principal
 17720 Puritas Avenue, Cleveland, Ohio 44135
 216.688.0680 • 216.688.0609 fax



Constellation Schools Grades K-6
Stockyard Community Elementary
 (2004)
 Gary Vojtush, Principal
 Roslyn Ware, Assistant Principal
 3200 West 65th Street, Cleveland, Ohio 44102
 216.651.5143 • 216.651.9515 fax

Eastside Arts Academy
 (2011)
 Katherine Rybak, Principal
 6700 Lansing Avenue, Cleveland, Ohio 44105
 216.441.9830 • 216.441.9834 fax

Constellation Schools Grades K-8
Elyria Community
 (2001)
 Thomas Flood, Principal
 Brian Belmont, Assistant Principal
 Elementary 300 North Abbe Road, Elyria, Ohio 44035
 440.366.5225 • 440.366.6280 fax
 Middle 336 South Logan Street, Elyria, Ohio 44035
 440.365.0390 • 440.365.0397 fax

Madison Community Elementary
 (2004)
 Brittney Lester, Principal
 Kevin Sheridan, Assistant Principal
 2015 West 95th Street, Cleveland, Ohio 44102
 216.651.5212 • 216.651.9040 fax

Westside Community School of the Arts
 (2007)
 Deborah Rotolo, Principal
 Howard Waugaman, Assistant Principal
 3727 Bosworth, Cleveland, Ohio 44111
 216.688.1900 • 216.688.1902 fax

Constellation Schools Grades 5-8
Old Brooklyn Community Middle
 (2006)
 Cherie Kaiser, Principal
 Kristina Scott, Assistant Principal
 4430 State Road, Cleveland, Ohio 44109
 216.351.0280 • 216.661.5975 fax

Westpark Community Middle
 (2006)
 Michael Becker, Principal
 16210 Lorain, Cleveland, Ohio 44111
 216.251.7200 • 216.251.0355 fax

Puritas Community Middle
 (2006)
 Deborah Piazza, Principal
 Victoria Dela Cuesta, Assistant Principal
 17720 Puritas Avenue, Cleveland, Ohio 44135
 216.251.1596 • 216.251.3540 fax

Lorain Community Middle
 (2006)
 Maureen Millett, Principal
 Jordan McHugh, Assistant Principal
 1110 West 4th Street, Lorain, Ohio 44052
 440.242.2023 • 440.204.2134 fax

Constellation Schools Grades 7-8
Stockyard Community Middle
 (2010)
 Gary Vojtush, Principal
 Roslyn Ware, Assistant Principal
 3200 West 65th Street, Cleveland, Ohio 44102
 216.961.5052 • 216.961.9227 fax



Constellation Schools Grades K-12
Parma Community
 (2000)
 Linda Geyer, Principal
 Leah Walden, Principal Mentee
 Ciara Gaspar, Assistant Principal
 Parma Community Elementary– Day Drive
 7667 Day Drive, Parma, Ohio 44129
 440.888.5490 • 440.888.5890 fax
 Julie Hamski, Assistant Principal
 Parma Community Pearl Road Elementary
 6125 Pearl Road, Parma Heights, Ohio 44130
 440.345.5960 • 440.882.6169 fax
 Todd Lueke, Assistant Principal
 Parma Community Intermediate
 3421 Snow Road, Parma, Ohio 44134
 440.340.4654 • 440.340.4668 fax

Charlotte Ray, Assistant Principal
 Karen Lamson, Assistant Principal
 Middle and High
 5983 West 54th Street, Parma, Ohio 44129
 440.845.2587 • 440.845.2834 fax



Educational Plans/Programs

Our curriculum is aligned with the Ohio Academic Content Standards and is designed to guide students toward their grade level goals. Content areas include: reading/language arts, math, science, social studies, art, music, physical education/health and technology. Teachers made the necessary adjustments to our current curriculum in an effort to stay aligned with the state standards. During the 2019/2020 academic year, all Constellation Schools utilized the Ohio Learning Standards to prepare our students for the Ohio State Assessments, although all assessments were canceled due to COVID-19.

Title 1 services (small grouping with a reading/math teacher) and Special Education Services are implemented to assist students who qualify for these services. Numerous online programs are utilized as part of our Response to Intervention program in an effort to move children through the intervention pyramid.



Our 1:1 laptop program increases the use of technology to engage students and improve academic achievement. In addition to G Suites for Education (Google Apps), the use of our online curriculum and other educational apps provided our students with personalized and differentiated learning activities. From practicing basic keyboarding and mouse skills to learning to code and screencast, our students honed transferable technical skills necessary for future success. Our technology integration coaches provided support through lesson planning, co-teaching, and professional development sessions. As a team, teachers and coaches continue to strive for a balanced effective technology usage.

Teachers establish high academic measures for achievement and behavior in their classrooms. Through age appropriate teaching methods, all students will reach or exceed their maximum potential. The cornerstone of our academic program is emphasized through Character Education, which permeates throughout our curriculum. All of our classrooms and hallways have a variety of posters and bulletin boards that define acceptable character. Good behavior and appropriate manners from everyone is a constant expectation of our students and staff. Character education enhances our educational plan while securing a safe and nurturing learning environment for all of our students.

Students were able to highlight their talents and skills with assorted programming throughout the year. The All Constellation Spelling Bee brought together the top spellers from each school in February. Also in February, the All Constellation Science and Invention Fair provided students with the opportunity to share various science projects. Students also participated in the Constellation Schools Volleyball and Basketball teams.

Afterschool clubs and activities are offered in a variety of our schools addressing such interests as: drama, basketball, volleyball, creative writing, reading and the arts. All of these programs are organized and facilitated by staff who go above and beyond to provide our students with a well-rounded education rich with opportunities.





Professional Development

Professional Development

Constellation Schools are committed to improving student learning by providing professional development activities that are research-based and relevant to individual school's needs. The professional development will be sustained over time, and incorporate technology so that each participant will have the confidence and capabilities to provide rigorous instruction that challenges students' thinking. Through professional development we can ensure all students reach their full potential to contribute to a democratic society including maximizing each student's abilities and encouraging self-reflection and a lifelong love for learning.

Our Local Professional Development Committee (LPDC) follows all state requirements to renew teaching/principal certificates and licensures.

Several Professional development opportunities were provided before the start of the school year such as:

- PBIS
- Technology integration
- Max teaching strategies
- Special education procedures
- Curriculum
- Health training
- Classroom management
- Test taking strategies

Search for Children with Disabilities Underway-School districts across the state of Ohio are participating in an effort to identify, locate, and evaluate all children from birth through 21 years of age who may have disabilities. Disability, in this instance, means such conditions as hearing impairments, visual impairments, speech or language impairments, specific learning disabilities, emotionally disturbed, multiple disabilities, mental retardation, other health impairments, physical impairments, autism, and traumatic brain injury. Public schools have responded vigorously to federal and state mandates requiring the provision of a free appropriate public education regardless of a child's disability. But before school districts can serve children, they must be found. Many children with disabilities are preschoolers. Parents may not be aware their child has a disability or that there are programs and services available. All information collected will be held in strict confidence and released to others only with parent permission or as allowed by law. For example, the school district will send records on request to a school district or other educational agency in which a student intends to enroll. The parents may have a copy of those records upon request. The school district will keep a record of all persons who review confidential records with the exception of authorized school employees, or other educational agency personnel. The school will also maintain a list of those employees who may have access to records.

Professional Development Coaches:

The Professional Development Coach provides a framework of support and professional development for all teachers. The coaches create an atmosphere for collaboration and teamwork in helping to achieve the goals of the school. Professional development coaches provided various workshops to enhance academic and professional growth for the teachers and the schools. Several professional development opportunities included:

- Curriculum support
- Classroom management
- Data analysis
- Student motivation
- Using assessment to drive instruction
- Technology integration
- Improving reading and math instruction

Resident Educator Program:

The Ohio Resident Educator Program is a comprehensive, four-year initiative to assist beginning teachers with mentoring and professional development as they start their education careers. Ohio Revised Code 3319.223 and Ohio Administrative Code 3301-24-04 provide the basis for the Ohio Resident Educator Program and the requirement to successfully pass the Resident Educator Summative Assessment (RESA). When teachers successfully complete program requirements, including the RESA component, they become eligible for a professional teaching license. Teachers take the RESA in year 3 of the four-year program. A resident educator Mentor is provided to all teachers in the Resident Educator Program. Mentors and Resident Educators collaborate in the areas of instruction, assessment, lesson planning, and student achievement. Mentors offer onsite, individualized support to teachers in order to meet the needs of the teachers and their students.



Special Services

Constellation Schools has a commitment to provide a free and appropriate public education for children with disabilities in accordance with state and federal laws, rules, and regulations. In that endeavor, the Educational Support Services Department works to assist all of our schools in the following specialized areas: Special Education, Psychological Services, Speech and Language Services, School Health Services, Occupational Therapy Services, and Physical Therapy Services. Additionally, the Educational Support Services Department assists each of our schools in creating and maintaining their Response to Intervention Process, Grade Level Intervention Teams, writing Section 504 Plans and Title I support.

Psychological Services

Psychologists employed by Constellation Schools are Ohio Department of Education licensed and have specialized training in both psychology and education. They collaborate with parents and community agencies in order to coordinate services and interventions for students. They provide consultative services to educators and are members of the school-based intervention teams. School psychologists assist in assessment, eligibility, and program planning for students with disabilities as part of a range of special education services that Constellation Schools provides. Counseling may be delivered to special education students who demonstrate behavioral difficulties that impede their educational progress. Crisis intervention is also provided when necessary.

Speech & Language Services

Good communication skills are important for speaking, listening, reading, writing, and learning at school. Some students have communication difficulties that can interfere with their ability to understand and participate in classroom instruction and impair their relationships with teachers and other children. Students who are formally identified as having communication problems that adversely affect their education are eligible to receive speech and/or language services from a speech & language pathologist. Speech & language services can be provided in a variety of ways, depending on the student's needs. Collaboration with teachers is important to ensure the student's communication goals are integrated into the classroom.



School Health Services

Constellation Schools promotes health and wellness through a coordinated school health program. Our program focuses on collaboration between administrators, staff, families and the community to ensure that our students learn in a healthy school environment and obtain a state of health and wellness that will allow them to learn and achieve their maximum potential. School health services, one component of this coordinated school health program, is provided by professional school nurses. School nurses are committed to improving health outcomes, academic achievement,

And life-long achievement for all students at Constellation Schools. To that end, the school nurses of Constellation Schools follow the Standards of School Nursing Practice (National Association of School Nurses) and the state and federal laws that govern health services in schools.

Occupational Therapy Services

School-based occupational therapy is available for students who are eligible for special education services. The profession of occupational therapy is concerned with a person's ability to participate in meaningful and purposeful daily life activities or "occupations." In the school setting, the role of the occupational therapist is to help children perform important learning and school-related activities in order to fulfill their role as students. Occupational therapy services support a child's participation in occupations of daily living (dressing, eating, etc.), academic areas, play, leisure, and social interactions. As part of the educational team within a school setting, occupational therapists work closely with the student, parents, and educators to identify the skills of the student, the demands of the environment, and appropriate solutions for interventions based on each child's unique needs.



Technology

Using technology is an important part of life at Constellation Schools. We provide many technology tools to our students, to create a superior learning environment where they can explore new ways of working, delve into the practically unlimited encyclopedia of available knowledge, and understand the ways information is shared and problems are solved. Constellation recognizes the importance of learning in a safe environment, so we train our teachers to guide student learning, and back them up with a powerful set of filters and firewalls that keep our computer network focused on academic success.

We invest heavily into classroom technology, and are better equipped than most public schools. Nearly every classroom is outfitted with a large interactive board, where the teacher and students can view and manipulate information on a giant computer screen. Each interactive board can be used to share an internet web quest with the entire class, or allow individual students to physically interact with digital objects on screen, moving, changing, writing, and drawing to get the point of the lesson. They make a fantastic big screen for videos from Discovery Education too! This is a subscription to a wealth of videos and lesson materials from The Discovery Channel. We subscribe because we know children today are "digital natives" who respond better and engage more when multimedia is used for teaching.



Our teachers receive significant technology training, from after school workshops to one-on-one sessions with technology integration coaches. Constellation provides training in Google Apps for Education and other web-based tools to support our 1:1 laptop initiative. Constellation students in grades 2-12 participate in our 1:1 laptop program. They receive a laptop to use in school, and after extensive lessons on digital citizenship, online safety and laptop care, they earn the privilege to take their laptops home in the provided laptop bag. To prepare our kindergarteners and 1st graders, our students have access to either desktops or laptop to begin typing and computer basics. Our teachers integrate technology in many innovative and creative ways at all grade levels.

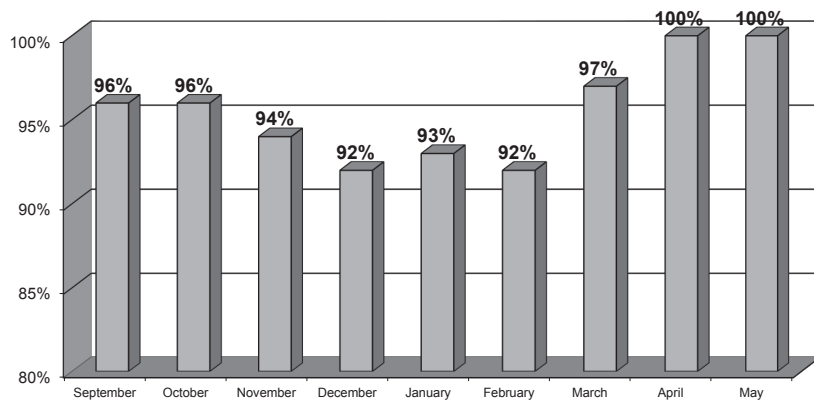
From our Mission Statement to our individual students, we strive to ensure the success of every child in our advancing technological society. As technology is becoming more and more a tool for 21st Century Learning, Constellation Schools is committed to providing every student a technology rich learning environment.





Student Enrollment, Attendance & Demographics

2019-2020 Student Monthly Attendance Percentage



About Our Students

Students at Parma Community are enrolled on a first come, first served basis during the first two weeks of December. Those students who are currently enrolled are ensured a place for the following school year if they enroll during these two weeks. If more students apply than there are spots, a lottery is held and a waiting list is formed.

Student per Class/Teacher Ratio for 2019-2020

24 Students : 1 Teacher maximum

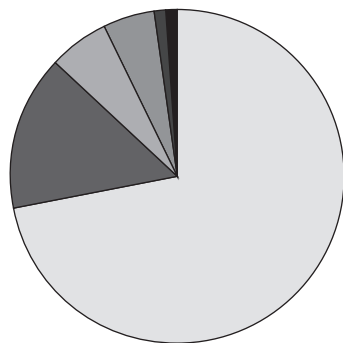
1395 Students Enrolled

39% Eligible for Low Income

Demographics

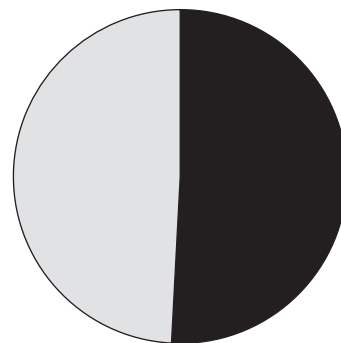
- 1% Asian
- 6% African American
- 72% Caucasian
- 15% Hispanic
- 5% Multiracial
- 1% Other

Student Demographics



- Asian 1%
- African American 6%
- Hispanic 15%
- Multiracial 5%
- Caucasian 72%
- Other 1%

Student Gender



- Male 51%
- Female 49%

Home School Notification

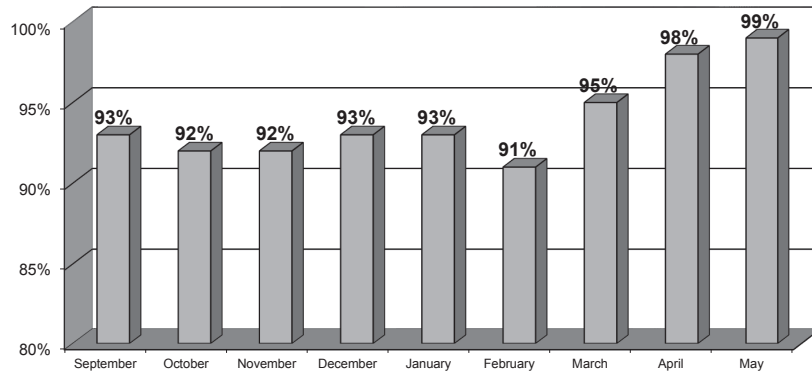
The school is a public school and students enrolled in and attending the school are required to take achievement tests and other examinations prescribed by law. In addition, there may be other requirements for students at the school that are prescribed by law. Students who have been excused from the compulsory attendance law for the purpose of home education as defined by the Administrative code shall no longer be excused for that purpose upon their enrollment in a community school.



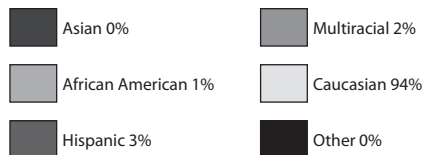
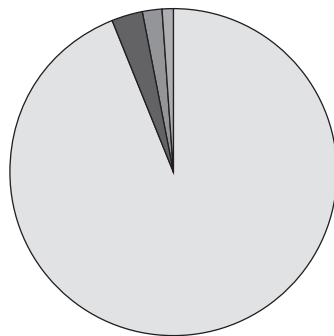
Parma Community Staff & Board

Parma Community Staff

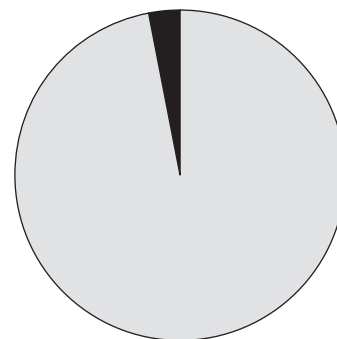
2019-2020 Staff Monthly Attendance Percentage



Staff Demographics



Staff Gender



Principal

Linda Geyer/Leah Walden

Constellation Schools: Parma Community Elementary

Ciara Gaspar, Assistant Principal
 Kimberly Kuczynski, Administrative Assistant
 Patricia Lynn, Administrative Assistant
 Cecilia Steinman, Kindergarten
 Elizabeth Krajak, Kindergarten
 Meghan Pacifico, Kindergarten
 Julia Tollerup, Kindergarten
 Andrea French, 1st Grade
 Amber Mattila, 1st Grade
 Julie Dieterich, 1st Grade
 Vicki Cardenas, 2nd Grade
 Melissa Scheske, 2nd Grade
 Jennifer Brown, 2nd Grade
 Jacqueline Michalek, 3rd grade
 Shana Toth, 3rd Grade
 Rebecca Amacher, 3rd Grade
 Paul Bolling, Title 1
 Jennelle Twardzik, Title 1
 Lisa Watts, Title 1
 Susan Lindsey, Special Education
 Brittney Sgro, Special Education
 Margaret Kerr, Music
 Lidia Ridinger, Physical Education
 Kayla Green, Long Term Teacher
 Amanda Gerbic, Long Term Teacher
 Toco Arthur, Aide
 Melissa Krilosky, Aide
 Jessica Moody, Food Service
 Lee DiSante, Nurse
 Judi-Anne Wirkus – Cleaner
 Monica Durica, Counselor



Parma Community Staff & Board Continued

Constellation Schools: Parma Community Pearl Road Elementary

Julie Hamski, Assistant Principal
Jennifer DiAngelo, Administrative Assistant
Jennifer Walker, Administrative Assistant
Rachael Aquila, Kindergarten
Sarah Barnett, Kindergarten
Rebekah Walter, Kindergarten
Kayla Kaye, 1st Grade
Ashley Kenaga, 1st Grade
Julia Negray, 1st Grade
Samantha Wheeler, 1st Grade
William Hartman, 2nd Grade
Kelly Conroy, 2nd Grade
Sara Ries, 3rd Grade
Danielle Palley, 3rd Grade
Kaylee Yakovich, Title 1
Nicole Metz, Title 1
Kinsley Smith, Title 1
Shelby Orlandi, Special Education
Christine Potts Special Education
Margaret Kerr, Music
Lidia Ridinger, Physical Education
Emilee Beyer, EL Teacher
Dianne Matthews, Aide
Kim Hille, Aide
Lee DiSante, Nurse
Monica Durica, Counselor
David Tucker, Psychologist
Fran Horvath, Occupational Therapist
Stephanie Udovich, Speech/Language Pathologist
April Bragg, Technology Integration Coach
Tonya Atha, Instructional Coach
Jeremy Daley, Field Technician
Talia Flanick, Building Teacher
Renee Poloha, Food Service
Vincent Polowy, Cleaner

Constellation Schools: Parma Community Intermediate

Todd Luecke, Assistant Principal
Gloria Noormaa, Administrative Assistant
Lori Fitz, Administrative Assistant
Carrie Macalla, 4th Grade
Lisa Misenko, 4th Grade
Emily LaBant, 4th Grade
Traci Kunc, 4th Grade
Leah Bjorn, 5th Grade
Kristin Carapucci, 5th Grade
Barbara Massaad, 5th Grade
Emily Banach, 5th Grade
Rebecca Barton, 6th Grade
Jessica Schnear, 6th Grade

Salvator Wendling, 6th Grade
Korynn Lavin, 6th Grade
Jonelle Rotuno, Title 1
Catherine Palcisko, Title I
Stacy Akin, Special Education
Sarah Dowler, Special Education
Rebecca Huffman, Special Education
Matthew Sims, Special Education
Marian Young, Art
Autumn Brown, Physical Education
Lia Bendix, Music
Sarah Block, Band
Emily Pfeifer, Aide
Nicole Tully, Aide
Paula Guarriere, Aide
Amanda Minor, Aide
Dawn Leko, Nurse
Connie Fasig, Technology Integration Coach
Monica Durica, Counselor
MacKenzie Gardner, Food Service
Kelly Joy, Food Service
Salena Kaczynski, Cleaner

Constellation Schools: Parma Community Middle

Lynn Wilson, Administrative Assistant
Garrett Marcum, 7th Grade
Mary Carlo, 7th Grade
Stephanie Shebestak, 7th Grade
Bailey Begin, 7th Grade
Kelly Gallagher, 8th Grade
Sam Hayest, 8th Grade
Kaila Phan, 8th Grade
Michelle Galmarini, Title 1
Mary Kay Kolasinski, Title 1
Amanda Katsilis, Special Education
Lucinda Rix, Special Education
Lorelei Hein, Physical Education/Health
Kori Stratton, Physical Education/Health
Sarah Block, Music
Tara McNutt, Art
Mark Russo, Music
Claire Stepan, Technology Integration Coach
Teresa Martin, Nurse
Sophia Zivic - Aide

Constellation Schools: Parma Community High

Charlotte Ray, Assistant Principal
Karen Lamson, Assistant Principal
Maria Lapso, Administrative Assistant
Denise Perkins, Administrative Assistant
Christy Stefanak, Guidance Counselor
Jennifer Sawyer, Guidance Counselor

Laura Stevens, English
Charisa Planic, English
Angela Trela, English
Brittany Parks, English
Corina Carl, Math
Corinna Fogwell, Math
Elisha Knox, Math
Ariana Sampsel, Math
Allison Poloha, Math
Jason Bosch, Science
Ronald Dawson, Science
Jason Samsa, Science
Matthew Newcamp, Science
Megan Kennedy, Science
Genie Donley, Social Studies
Mark Gainer, Social Studies
Karl Kessler, Social Studies
Michael Lippy, Social Studies
Ellen Intermill-Shimko, Social Studies
Lisa Hazen, Spanish
Maria Schwarz, Spanish
Michelle Fredriksen, Art
Tara McNutt, Art
Lorelei Hein, Physical Education/Health
Kori Stratton, Physical Education/Health
Jacob Kerner, Physical Education/Health
John Sweeney, Technology
Renee Dougherty, Special Education
Joseph Jasin, Special Education
Laura Mizer, Special Education
Jennifer Parker, Special Education
Mark Russo, Music
Amanda Seibert, Music
Tracy Johnson, Aide
Michele Lungo, Aide
Stacy Hollenback, Food Service
Irene Waugaman, Food Service
Karen McCarthy, Cleaner
Cheryl Landrau, Cleaner
Joel Torres, Cleaner
Claire Stepan, Technology Integration Coach
Garin Bailey, IT Field Technician
Tonya Atha, Instructional Coach
Vince Semanik, Resource Officer
Jennifer Hall, Speech & Language Pathologist
Fran Horvath, Occupational Therapist

Parma Community Board

President: John Noga

Members: Jerry Bednar - Bert Butts - Mark Stypczynski - Leo Tischer



NWEA Assessments

The NWEA assessments are: Measures of Academic Progress® (MAP®) – These computerized tests are adaptive and offered in Reading, Language Usage, and Mathematics. When taking a MAP® test, the difficulty of each question is based on how well a student answers all the previous questions.

~Percent Met Projection indicates the percent of students that met their individual student growth measure.

Parma Community Day

Math: Math K-12

Grade (Winter 2020)	Growth Count‡	Comparison Periods						Growth Evaluated Against								
		Fall 2019			Winter 2020			Growth		Grade-Level Norms			Student Norms			
		Mean RIT	SD	Percentile	Mean RIT	SD	Percentile	Observed Growth	Observed Growth SE	Projected Growth	School Conditional Growth Index	School Conditional Growth Percentile	Count with Projection	Count Met Projection	Percent Met Projection	Student Median Conditional Growth Percentile
K	86	139.1	11.0	57	147.0	11.9	45	8	0.8	9.5	-1.42	8	86	35	41	33
1	72	163.5	12.0	80	172.9	13.4	80	10	0.8	9.1	0.23	59	72	43	60	63
2	62	182.0	11.0	92	192.1	11.1	96	10	0.8	8.2	1.65	95	62	40	65	68
3	65	188.0	9.8	54	192.2	8.4	36	4	0.7	7.0	-2.68	1	65	22	34	25

Parma Community Pearl

Math: Math K-12

Grade (Winter 2020)	Growth Count‡	Comparison Periods						Growth Evaluated Against								
		Fall 2019			Winter 2020			Growth		Grade-Level Norms			Student Norms			
		Mean RIT	SD	Percentile	Mean RIT	SD	Percentile	Observed Growth	Observed Growth SE	Projected Growth	School Conditional Growth Index	School Conditional Growth Percentile	Count with Projection	Count Met Projection	Percent Met Projection	Student Median Conditional Growth Percentile
K	60	139.1	11.0	57	152.3	10.5	82	13	1.0	9.5	3.35	99	60	46	77	68
1	87	162.8	13.1	76	172.3	12.6	78	10	0.8	9.1	0.30	62	87	53	61	53
2	49	184.8	11.5	97	192.2	13.4	96	7	1.1	8.2	-0.72	23	49	27	55	52
3	48	188.2	12.4	55	193.0	12.6	41	5	0.6	7.0	-2.12	2	48	19	40	36

Parma Community Intermediate

Math: Math K-12

Grade (Winter 2020)	Growth Count‡	Comparison Periods						Growth Evaluated Against								
		Fall 2019			Winter 2020			Growth		Grade-Level Norms			Student Norms			
		Mean RIT	SD	Percentile	Mean RIT	SD	Percentile	Observed Growth	Observed Growth SE	Projected Growth	School Conditional Growth Index	School Conditional Growth Percentile	Count with Projection	Count Met Projection	Percent Met Projection	Student Median Conditional Growth Percentile
4	103	197.1	14.1	41	202.2	13.3	37	5	0.6	5.8	-0.65	26	103	49	48	40
5	97	206.6	12.0	40	209.7	13.1	32	3	0.6	4.8	-1.47	7	97	35	36	35
6	90	210.5	13.2	32	213.7	13.7	28	3	0.5	4.2	-0.90	18	90	42	47	41



NWEA Assessments

Parma Community Day

Language Arts: Reading

Grade (Winter 2020)	Growth Count‡	Comparison Periods						Growth Evaluated Against								
		Fall 2019			Winter 2020			Growth		Grade-Level Norms			Student Norms			
		Mean RIT	SD	Percentile	Mean RIT	SD	Percentile	Observed Growth	Observed Growth SE	Projected Growth	School Conditional Growth Index	School Conditional Growth Percentile	Count with Projection	Count Met Projection	Percent Met Projection	Student Median Conditional Growth Percentile
K	86	140.8	8.2	85	146.9	9.6	72	6	0.7	8.2	-1.76	4	86	34	40	36
1	72	162.8	12.0	94	169.5	12.9	85	7	0.8	9.5	-2.17	1	72	27	38	32
2	62	180.2	11.5	92	185.7	12.0	83	5	0.8	8.4	-2.30	1	62	28	45	40
3	65	188.9	13.2	68	192.6	13.3	51	4	1.1	6.8	-2.97	1	65	25	38	31

Parma Community Pearl

Language Arts: Reading

Grade (Winter 2020)	Growth Count‡	Comparison Periods						Growth Evaluated Against								
		Fall 2019			Winter 2020			Growth		Grade-Level Norms			Student Norms			
		Mean RIT	SD	Percentile	Mean RIT	SD	Percentile	Observed Growth	Observed Growth SE	Projected Growth	School Conditional Growth Index	School Conditional Growth Percentile	Count with Projection	Count Met Projection	Percent Met Projection	Student Median Conditional Growth Percentile
K	60	140.9	8.9	85	150.7	8.9	91	10	1.0	8.2	1.30	90	60	40	67	65
1	88	164.0	11.9	96	171.4	13.3	91	7	0.7	9.5	-1.66	5	88	36	41	35
2	49	181.1	12.9	94	186.6	12.2	86	5	0.9	8.4	-2.31	1	49	21	43	36
3	49	184.9	17.0	47	192.6	15.0	51	8	1.0	6.9	0.72	76	49	26	53	47

Parma Community Intermediate

Language Arts: Reading

Grade (Winter 2020)	Growth Count‡	Comparison Periods						Growth Evaluated Against								
		Fall 2019			Winter 2020			Growth		Grade-Level Norms			Student Norms			
		Mean RIT	SD	Percentile	Mean RIT	SD	Percentile	Observed Growth	Observed Growth SE	Projected Growth	School Conditional Growth Index	School Conditional Growth Percentile	Count with Projection	Count Met Projection	Percent Met Projection	Student Median Conditional Growth Percentile
4	103	196.3	16.2	53	200.5	14.8	45	4	0.8	5.6	-1.34	9	103	44	43	38
5	97	203.3	14.6	48	207.4	13.3	46	4	0.8	4.5	-0.38	35	97	44	45	40
6	90	208.9	14.7	46	212.1	14.1	45	3	0.8	3.5	-0.35	36	90	48	53	51

Parma Community Middle

Language Arts: Reading

Grade (Winter 2020)	Growth Count‡	Comparison Periods						Growth Evaluated Against								
		Fall 2019			Winter 2020			Growth		Grade-Level Norms			Student Norms			
		Mean RIT	SD	Percentile	Mean RIT	SD	Percentile	Observed Growth	Observed Growth SE	Projected Growth	School Conditional Growth Index	School Conditional Growth Percentile	Count with Projection	Count Met Projection	Percent Met Projection	Student Median Conditional Growth Percentile
7	95	215.9	12.8	62	219.9	12.2	68	4	0.9	2.7	1.49	93	95	51	54	52
8	90	218.9	16.6	56	220.2	14.3	51	1	0.8	2.3	-1.04	15	90	36	40	39



NWEA Assessments

Parma Community Middle

Math: Math K-12

Grade (Winter 2020)	Growth Count‡	Comparison Periods						Growth Evaluated Against								
		Fall 2019			Winter 2020			Growth		Grade-Level Norms			Student Norms			
		Mean RIT	SD	Percentile	Mean RIT	SD	Percentile	Observed Growth	Observed Growth SE	Projected Growth	School Conditional Growth Index	School Conditional Growth Percentile	Count with Projection	Count Met Projection	Percent Met Projection	Student Median Conditional Growth Percentile
7	96	221.3	13.8	57	223.8	13.4	53	3	0.7	3.4	-0.90	18	96	46	48	40
8	90	226.4	17.5	58	228.0	19.0	53	2	0.7	2.9	-1.05	15	90	41	46	41

Parma Community High

Math: Math K-12

Grade (Winter 2020)	Growth Count‡	Comparison Periods						Growth Evaluated Against								
		Fall 2019			Winter 2020			Growth		Grade-Level Norms			Student Norms			
		Mean RIT	SD	Percentile	Mean RIT	SD	Percentile	Observed Growth	Observed Growth SE	Projected Growth	School Conditional Growth Index	School Conditional Growth Percentile	Count with Projection	Count Met Projection	Percent Met Projection	Student Median Conditional Growth Percentile
9	96	220.7	15.6	29	222.5	14.7	29	2	0.7	2.0	-0.26	40	96	49	51	47
10	2	*			*			*					*			
11	0	**			**			**					**			
12	0	**			**			**					**			

Parma Community High

Language Arts: Reading

Grade (Winter 2020)	Growth Count‡	Comparison Periods						Growth Evaluated Against								
		Fall 2019			Winter 2020			Growth		Grade-Level Norms			Student Norms			
		Mean RIT	SD	Percentile	Mean RIT	SD	Percentile	Observed Growth	Observed Growth SE	Projected Growth	School Conditional Growth Index	School Conditional Growth Percentile	Count with Projection	Count Met Projection	Percent Met Projection	Student Median Conditional Growth Percentile
9	110	215.1	16.6	36	215.1	16.3	29	0	1.0	1.6	-1.61	5	110	57	52	50
10	0	**			**			**					**			
11	0	**			**			**					**			
12	0	**			**			**					**			



Enrollment Information

For the 2021-2022 School Year ONLY

Re-Enrollment starts

Monday, November 16 ~ Wednesday, December 16, 2020

You must re-enroll online using

SchoolMint

<http://bit.ly/signinschoolmint>

For the 2020 – 2021 School Year Only

All admission procedures will be in compliance with Section 3314.06, of the Revised Code. **Applications will be available from November 16, 2020 – December 16, 2020 for the succeeding academic year.** During these weeks the school will accept applications from students wishing to enroll/re-enroll in the school. Preference will be given to students attending the School and to siblings of such students. **Applications submitted after December 16, 2020** will be subject to space availability after the lottery (if a lottery is conducted), and will be handled on a first-come, first-serve basis, until the maximum enrollment has been reached in each grade level. A waiting list may be established.

The Educational Service Center of Lake Erie West (ESCLEW) served as sponsor for *Constellation Schools: Parma Community* during the 2019-2020 school year. ESCLEW monitored the school's academic and fiscal performance, as well as organization and operation of the school, and determined that the school was overall compliant.



Constellation Schools Parma Community Financial Report for Fiscal Year 2020

The Cash Basis Report of Revenues and Expenditures for the Year ended June 30, 2020 reflects the activities of Constellation Schools: Parma Community during the year. The information provided below refers to this report and the accompanying graphs.

- Highlights for the Year:**
- ✓ 19th annual audit issued for 2019 with an “unqualified opinion” (best opinion available)
 - ✓ In Fiscal Year 2020 the school continued the 1 to 1 computer program for grades 2 through 12.

Revenues

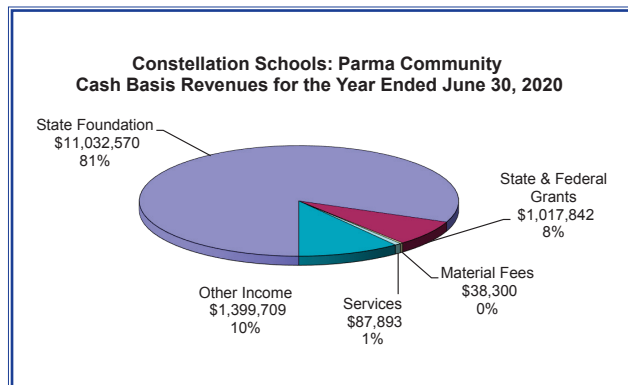
The largest source of operating revenue (81%) comes from the State of Ohio School Foundation Program. This funding is earned at a base rate of \$6,020 for each student enrolled during the year. Additional funds are provided for the special needs of students, the poverty level of the community in which each student resides, and other adjustments. Casino tax proceeds are also included in this category.

State and Federal Grants (8%) supplement school operations for specific purposes. The school received grants for Title I Intervention, Title III Services (English Language Learners), Professional Development, Special Education, Child Nutrition Services, and Electronic Communications.

Services (1%) were provided to multiple Constellation Schools for shared staff.

Materials Fees (<1%) are collected from each student to provide consumable materials used during the year.

Other income (10%) includes interest earned on bank account activity, contributions, field trip collections, lunch collections and other miscellaneous items.



Constellation Schools: Parma Community	
Cash Basis Statement of Revenues and Expenditures for the Year ended June 30, 2020 (Unaudited)	
Beginning Cash - July 1, 2019	\$ 814,993
Revenues	
State Foundation	\$ 11,032,570
State & Federal Grants	\$ 1,017,842
Material Fees	\$ 38,300
Services	\$ 87,893
Other Income	\$ 1,399,709
Total Revenue	\$ 13,576,314
Expenditures	
Personnel	\$ 5,667,261
Retirement & Benefits	\$ 1,819,229
Purchased Services	\$ 4,409,938
Supplies & Materials	\$ 369,008
Capital Outlay	\$ 165,401
Other	\$ 330,763
Total Expenditures	\$ 12,761,600
Ending Cash - June 30, 2020	\$ 1,629,707

Additional Information

A more detailed set of financial statements may be obtained by calling (216)712-7600, writing to the Treasurer, Constellation Schools 5730 Broadview Road, Parma, Ohio 44134 or by e-mail at the following address: zito.caroline@constellationschools.com.

During the fall of 2020 an audit of the school's financial records for the year ended June 30, 2020 will be completed. The audit report should be available during the winter at the above address and on the Auditor of State's website: www.auditor.state.oh.us.

Expenditures

Personnel services, combined with retirement and benefits, accounted for (58%) of the expenditures for the year. These expenditures include principal, support staff, teachers, state retirement systems, employment taxes, and health insurances.

Purchased services (35%) include expenditures for student support services (speech, psychologist, health, physical therapy, audiology services and occupational therapy), contracted substitutes, field trips, professional development, management services, sponsor services, test scoring, data reporting, facility operations, equipment leases, telephone, postage, travel, marketing, printing, food services, and other services.

Supplies and materials (3%) include instructional supplies, testing materials, office supplies, medical supplies, instructional software, online instruction, and maintenance supplies.

Capital Outlay (1%) includes purchases of classroom technology, equipment and furniture; food services equipment; office equipment; maintenance equipment; renovations to buildings and leasehold renovations.

Other (3%) includes audit fees, insurances (property, liability, fidelity bond, directors & officers), dues and subscriptions and other miscellaneous items.

