



Constellation Schools:

# Westside Community School of the Arts

*"The Right Choice for Parents and a Real Chance for Children!"*

2020-2021 Annual Report

2021-2022 School Calendar



# Mission, Vision, Value Statements & Slogans

## Mission

Constellation Schools provides every child an opportunity to obtain an excellent education built on a foundation of character education for life long success.



## Value

**We** believe all children deserve an exceptional education in a safe, caring, nurturing environment.

**We** will create a student focused community of global learners where children excel, are responsible, ethical world citizens, prepared for success in career, college and life.

## Organization Slogan

*The Right Choice for Parents  
and a Real Chance for Children!*

## Vision

Constellation Schools will create an exceptional learning community characterized by high expectations and academic excellence.

**Our** students will be actively engaged life-long global learners and be responsible, compassionate involved world citizens.

**Our** families will support their children and school as important, welcomed members of our diverse learning community.

**Our** teachers will be inspiring, compassionate and committed to the success of every student.

**Our** leaders will provide superior service, resources, and support to engage the community and ensure the success of every student.

**Our** Board of Directors will guide our school in creating a culture of excellence that ensures the success of every student.

## Character Education Slogan

*Remember*

*We all have Choices.*

*Choices have Consequences.*

*Be Smart and Make the Right Choice!*



# Constellation Schools & Its History

## **A Beginning**

Constellation Schools evolved from the desire of a small group of individuals to open a Montessori school in Cleveland's Old Brooklyn neighborhood. After a lot of hard work and many community meetings held over the course of two years, a change in Ohio law establishing community schools (or "charter schools") lead to the creation of Old Brooklyn Montessori School (OBCE). OBCE opened in August of 1998 with three employees and 27 students.

## **The Purpose of Constellation Schools**

Constellation Schools is an umbrella management organization, providing business, administrative, educational and financial support services to its managed schools. This structure allows these overhead expenses to be spread over all the schools, reducing the financial burden on individual schools. With Constellation performing most of the administrative functions, the building principals and teachers are freed up to do what they do best – educate children. Administrative centralization also eliminates duplicative services at each school. This type of efficiency is often used in business to increase efficiency. Within Constellation, it serves to improve performance and accountability. As the schools benefit from administrative centralization, more resources are available for students and teachers, resulting in more opportunities for students and better schools.

## **Success of the Organization**

In twenty years, Constellation Schools has grown from one school, 27 students, and 3 employees to fifteen schools educating more than 4,800 students and over 550 employees. A total of eleven buildings are owned by the schools which occupy them evidencing their acceptance within their communities and their financial strength.

## **Conclusion**

The founders of Constellation have established a community of schools that benefit from outstanding participation and support from staff, students and parents. Constellation has developed a reputation for its high standards and dedicated teachers, and for delivering a quality educational program in a safe and pleasant environment.



## **Students visit virtual sensory rooms**

Last November, Special Education Coordinator Laura Horvath, Support Services Program Coordinator Jillian Lukich and special education coaches met with the Constellation Schools special education team – intervention specialists and paraprofessionals, who are supported by a speech pathologist, occupational therapists and a school psychologist – to talk about what was and wasn't working, have a productive conversation around struggles with remote learning, and to share ideas.

Staff from one of Constellations Schools' 15 buildings – Paraprofessional Amanda Minor, and Intervention Specialists Christine Potts and Shelby Orlandi -- shared one of their best ideas with the group: creation of virtual sensory rooms for students in grades four through six. Like a traditional sensory room, the virtual one serves as a place for students to chill out and collect themselves – to take a break from the stimulus of the regular classroom.

Now, other members of the special education team are capitalizing on the great idea, each determining which of their students would most benefit from access to virtual sensory rooms and what they might need in terms of support based on their Individual Education Plans (IEPs).

Staff are creating access to the rooms – some for general use and others customized for individual students -- using attractive Google slides that invite students into the welcoming online space.

"Our intervention specialists and paraprofessionals are introducing students to the virtual rooms as they meet with them individually or in small groups," Horvath said. "They're teaching students – and their parents-- how to access the rooms through Google Classroom."

Slides guide students into different sensory rooms – from an introductory slide to one featuring educational tools and learning activities, another featuring do-it-yourself tools like painting, yoga and breathing exercises, and yet another featuring mindfulness tools and videos addressing social emotional needs and self-regulation.

"Feedback from the team has been very positive," Horvath said. "We want parents and students to know that we're still here for them. But there's value in students having access to the tools available through the virtual sensory rooms from home, even after we return to in-person classroom instruction."

*Article featured Buckeye Community Hope Foundation Sponsor Update- March '21*



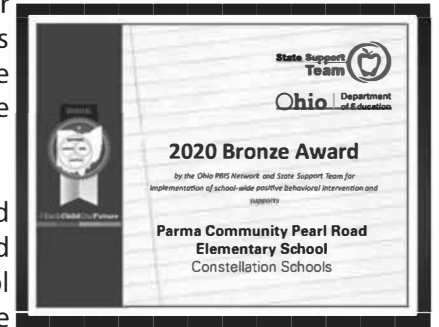
# Chairman's Message

The 2020/2021 school year was a continuation of the challenges our students and staff faced in the prior year. Constant changes and legitimate concerns regarding all aspects of our lives. Today, we look forward to a more normalized school year and educational environments that will more closely resemble the ones we had grown used to prior to the pandemic.

Through all the turmoil and despite all the challenges, Constellation schools were successful in expanding opportunities for students and taking advantage of community resources. Our teachers, staff and administrators worked hard to keep students and families engaged. Our school counselors presented a



"Partnering with Parents" initiative to provide parents creative ideas on how to help their children work through the demands of the unprecedented school year. In addition, all Constellation schools continued their emphasis on the previously implemented Positive Behavioral Interventions and Supports (PBIS) program to create learning environments where all students have an opportunity to be successful. Constellation Schools: Parma Community received the 2020 Ohio PBIS Bronze Award and participated in the Ohio PBIS Showcase.



Our schools also continued their partnerships with local community organizations to assist families negatively impacted by the pandemic. Constellation Schools: Stockyard Elementary and Middle hosted a food drive called "Give Back a Meal" to benefit school families, and Constellation Schools: Old Brooklyn partnered with Grace Church to have food drives during the holidays that benefited school families.



Constellation Schools: Elyria Community collected board games clothing and small gift items that were donated to the Lorain County Jobs and Family Services to be used for less fortunate families over the holidays.

Teachers worked tirelessly to find creative ways to keep students involved. Students at Constellation Schools: Puritas Middle participated in the Buckeye Community Hope Writing Challenge and one of the students was the 8<sup>th</sup> grade winner. Students at Constellation Schools: Elyria Community participated in the Sons of the American Revolution information contest and one of the students was a first-place winner.

As we look forward to the 2021/2022 school year there is great anticipation that as students return to our buildings, and things become more normal, that students will once again experience the many great things that to make Constellation's schools...

The Right Choice for Parents and a Real Chance for Children!  
Richard A. Lukich, President Constellation Schools LLC



# Directors & Administrative Staff

**Rebecca Keeney**  
*Executive Director*

**Elizabeth Long**  
*Receptionist*

**Marybeth Oko**  
*Executive Assistant & Compliance Coordinator*

**Caroline Zito**  
*Treasurer*

**Gayle Gilmore**  
*Assistant Treasurer*

**Connie Britton**  
**Lisa Gretchen**  
**Katherine Pacheco**  
*Accounts Payable Specialist*

**Kim Petonic**  
*Director of Human Resources*

**Cassandra Horwedel**  
*Human Resource Generalist*

**Aracelis Colon**  
*Payroll Practitioner*

**Brian Preseren**  
*Business & Safety Manger*

**Garrick Lukich**  
*Facilities Operations Manger*

**Jeff Morris**  
*Lead Maintenance Technician*

**Dan Doehr**  
**Justin Reffert**  
**Ron Tomola**  
**Salvatore Tagliarini**  
*Maintenance Technician*

**Jillian Lukich**  
*Support Services Program Coordinator*

**Katherine Violette**  
**Heather Skebo**  
**Suzanne Davis**  
**David Tucker**  
*School Psychologists*

**Phebe Crouch**  
**Jennifer Hall**  
**Chris O'Connell**  
**Marie Madej**  
**Jill Kidwell**  
**Stephanie Udovich**  
*Speech & Language Pathologists*

**Calli Elber**  
**Frances Horvath**  
**Kristen Pitsenbarger**  
*Occupational Therapists*

**Julia Howerton**  
*School Nurse Program Coordinator*

**Teresa Martin**  
*School Nurse*

**Lee DiSante**  
**Jennifer Gawelek**  
**Amanda Siegel**  
**Malinda Miller**  
**Hibah Ahmad**  
**Dawn Leko**  
**Amanda McCall**  
**Kathryn Reyes**  
*School Nurses*

**Laura Survance**  
*Technology Coordinator*

**Lisa Geyer**  
*Webmaster & Accounts Administrator*

**Fred Freeman**  
*Systems Administrator*

**Garin Bailey**  
*Sr. Systems Administrator*

**David Colon**  
*Education Technology Lead*

**Mary Pigott**  
*Education Technology Specialist*

**Jeremy Daley**  
**Benjamin Orr**  
*Filed Technician II*

**James Nolan**  
**Mathew Reyes**  
**David Smith**  
**Jeremiah Stebeltom**  
*Field Technician*

**Sarah Filimon**  
**Aurelia Iammarino**  
**Bryan Jasinski**  
**Kaitlyn Noble**  
**Claire Stepan**  
**Carolyn Usner**  
*Technology Integration Coach*

**Lisa Vinarcik**  
*Manager of Marketing & Public Relations*

**Gary Vojtush**  
*Education Program Coordinator*

**Joyce Lewis**  
*Professional Development Program Coordinator*

**Christine Garten**  
*Curriculum Manager*

**Cera Flynn**  
**Allison Lentz**  
**Erin Boron**  
**Lauren DiFranco**  
**Tonya Atha**  
**Elena Kucharski**  
*Professional Development Coach*

**Deborah Heider**  
*Title I Coach*

**Laura Horvath**  
*Special Education Program Coordinator*

**April Gunderman**  
**Julie Jones**  
*Special Education Coach*

**Andrea Yurick**  
*Manager of School Data, Records & Food Service Operations*

**Dominic Robinson**  
*Assistant Manager of School Data, Records & Food Service Operations*

**Tiffany Miller**  
*Administrative Assistant of School Data, Records & Food Service Operations*



# List of Schools

## Constellation Schools Grades K-4

### **Old Brooklyn Community Elementary**

(1998)  
Cherie Kaiser, Principal  
4430 State Road, Cleveland, Ohio 44109  
216.661.7888 • 216.661.5975 fax

### **Westpark Community Elementary**

(2001)  
Sheila Delzani, Principal  
16210 Lorain, Cleveland, Ohio 44111  
216.688.0272 • 216.688.0273 fax

### **Lorain Community Elementary**

(2001)  
Jordan McHugh, Principal  
Jason Wilson, Assistant Principal  
1110 West 4th Street, Lorain, Ohio 44052  
440.204.2130 • 440.204.2134 fax

### **Puritas Community Elementary**

(2003)  
Debbie Piazza, Principal  
Vicki Wasilewski, Assistant Principal  
17720 Puritas Avenue, Cleveland, Ohio 44135  
216.688.0680 • 216.688.0609 fax

## Constellation Schools Grades K-8

### **Madison Community Elementary**

(2004)  
Brittney Lester, Principal  
Kevin Sheridan, Assistant Principal  
2015 West 95th Street, Cleveland, Ohio 44102  
216.651.5212 • 216.651.9040 fax

## Constellation Schools Grades K-6

### **Stockyard Community Elementary**

(2004)  
Gary Vojtush, Principal  
Roslyn Ware, Assistant Principal  
3200 West 65th Street, Cleveland, Ohio 44102  
216.651.5143 • 216.651.9515 fax

### **Eastside Arts Academy**

(2011)  
Katherine Rybak, Principal  
6700 Lansing Avenue, Cleveland, Ohio 44105  
216.441.9830 • 216.441.9834 fax

## Constellation Schools Grades 7-8

### **Stockyard Community Middle**

(2010)  
Gary Vojtush, Principal  
Roslyn Ware, Assistant Principal  
3200 West 65th Street, Cleveland, Ohio 44102  
216.961.5052 • 216.961.9227 fax

## Constellation Schools Grades K-8

### **Elyria Community**

(2001)  
Thomas Flood, Principal  
Brian Belmont, Assistant Principal  
Elementary 300 North Abbe Road, Elyria, Ohio 44035  
440.366.5225 • 440.366.6280 fax  
Middle 336 South Logan Street, Elyria, Ohio 44035  
440.365.0390 • 440.365.0397 fax

## Constellation Schools Grades 5-8

### **Old Brooklyn Community Middle**

(2006)  
Kristina Scott, Principal  
4430 State Road, Cleveland, Ohio 44109  
216.351.0280 • 216.661.5975 fax

### **Westpark Community Middle**

(2006)  
Michael Becker, Principal  
16210 Lorain, Cleveland, Ohio 44111  
216.251.7200 • 216.251.0355 fax

### **Puritas Community Middle**

(2006)  
Debbie Piazza, Principal  
Vicki Wasilewski, Assistant Principal  
17720 Puritas Avenue, Cleveland, Ohio 44135  
216.251.1596 • 216.251.3540 fax

### **Lorain Community Middle**

(2006)  
Jordan McHugh, Principal  
Jason Wilson, Assistant Principal  
1110 West 4th Street, Lorain, Ohio 44052  
440.242.2023 • 440.204.2134 fax

## Constellation Schools Grades K-8

### **Westside Community School of the Arts**

(2007)  
Deborah Rotolo, Principal  
Howard Waugaman, Assistant Principal  
3727 Bosworth, Cleveland, Ohio 44111  
216.688.1900 • 216.688.1902 fax

## Constellation Schools Grades K-12

### **Parma Community**

(2000)  
Leah Walden Principal  
Ciara Gaspar, Assistant Principal  
Parma Community Elementary–Day Drive  
7667 Day Drive, Parma, Ohio 44129  
440.888.5490 • 440.888.5890 fax  
Julie Hamski, Assistant Principal  
Parma Community Pearl Road Elementary  
6125 Pearl Road, Parma Heights, Ohio 44130  
440.345.5960 • 440.882.6169 fax

William Bogan, Assistant Principal  
Parma Community Intermediate  
3421 Snow Road, Parma, Ohio 44134  
440.340.4654 • 440.340.4668 fax  
Charlotte Ray, Assistant Principal  
Todd Luecke, Assistant Principal  
Colleen Szesze, Assistant Principal  
Middle and High  
5983 West 54th Street, Parma, Ohio 44129  
440.845.2587 • 440.845.2834 fax



# Parent Notification System



The Trusted Platform  
for School Community Engagement

## Parents and Guardians

### You can take advantage of our Text Messaging Service

Our school utilizes the SchoolMessenger system to deliver text messages, straight to your mobile phone with important information about events, school closings, safety alerts and more.\*

You can participate in this free service\* just by sending a text message of “Y” or “Yes” to our school’s short code number, **67587**.

You can also opt out of these messages at any time by simply replying to one of our messages with “**Stop**”.

SchoolMessenger is compliant with the Student Privacy Pledge™, so you can rest assured that your information is safe and will never be given or sold to anyone.



Constellation Schools will be implementing a new notification system through SchoolMessenger. This system will have the ability to notify parents through voice calls, e-mail and SMS (text messaging). Please visit the school office to make sure your cell phone is on record before you opt-in to the SMS feature.

**Look for more information to follow!**

Thank you!

Opt-In from  
your mobile  
phone now!



Just send  
“Y” or “Yes”  
to 67587

**i** Information on SMS text messaging and Short Codes:

SMS stands for Short Message Service and is commonly referred to as a “text message”. Most cell phones support this type of text messaging. Our notification provider, SchoolMessenger, uses a true SMS protocol developed by the telecommunications industry specifically for mass text messaging, referred to as “short code” texting. This method is fast, secure and highly reliable because it is strictly regulated by the wireless carriers and only allows access to approved providers. If you’ve ever sent a text vote for a TV show to a number like 46999, you have used short code texting.

**\*Terms and Conditions** – Message frequency varies. Standard message and data rates may apply. Reply HELP for help. Text STOP to cancel. Mobile carriers are not liable for delayed or undelivered messages. See [schoolmessenger.com/txt](http://schoolmessenger.com/txt) for more info.



©2016 West Corporation [10242016]. All rights reserved. May not be reproduced without expressed written permission.

If you have any questions or need further assistance, please e-mail or call Lisa Vinarcik, Manager of Marketing and PR at [Vinarcik.lisa@constellationschools.com](mailto:Vinarcik.lisa@constellationschools.com) or 216-712-7600 extension 50107.



# Educational Plans/Programs



Our curriculum is aligned with the Ohio Academic Content Standards and is designed to guide students toward their grade level goals. Content areas include: reading/language arts, math, science, social studies, art, music, physical education/health and technology. All Constellation Schools utilized the Ohio Learning Standards to prepare our students for the Ohio State Assessments. Teachers made the necessary adjustments to our current curriculum in an effort to stay aligned with the state standards.

Title 1 services (small grouping with a reading/math teacher) and Special Education Services are implemented to assist students who qualify for special services. Numerous online programs are utilized as part of our Response to Intervention program in an effort to move children through the intervention pyramid.

Our 1:1 laptop program increases the use of technology to engage students and improve academic achievement. In addition to G Suites for Education (Google Apps), the use of our online curriculum and other educational apps provided our students with personalized and differentiated learning activities. From practicing basic keyboarding and mouse skills to learning to code and screencast, our students honed transferable technical skills necessary for future success. Our technology integration coaches provided support through lesson planning, co-teaching, and professional development sessions. As a team, teachers and coaches continue to strive for a balanced effective technology usage.

Teachers establish high academic measures for achievement and behavior in their classrooms. Through age appropriate teaching methods, all students will reach or exceed their maximum potential. The cornerstone of our academic program is emphasized through Character Education, which permeates throughout our curriculum. All of our classrooms and hallways have a variety of posters and bulletin boards that define acceptable character. Good behavior and appropriate manners from everyone is a constant expectation of our students and staff. Character education enhances our educational plan while securing a safe and nurturing learning environment for all of our students.





# Professional Development

## **Professional Development**

Constellation Schools are committed to improving student learning by providing professional development activities that are research-based and relevant to individual school's needs. The professional development will be sustained over time, and incorporate technology so that each participant will have the confidence and capabilities to provide rigorous instruction that challenges students' thinking. Through professional development we can ensure all students reach their full potential to contribute to a democratic society including maximizing each student's abilities and encouraging self-reflection and a lifelong love for learning.

Our Local Professional Development Committee (LPDC) follows all state requirements to renew teaching/principal certificates and licensures.

Several Professional development opportunities were provided before the start of the school year such as:

- Technology integration
- Social Emotional Learning
- Trauma Informed Care
- Curriculum
- Health Training
- Classroom Management
- Building Relationships with Students
- Intentional Teaching Strategies

**Search for Children with Disabilities Underway**-School districts across the state of Ohio are participating in an effort to identify, locate, and evaluate all children from birth through 21 years of age who may have disabilities. Disability, in this instance, means such conditions as hearing impairments, visual impairments, speech or language impairments, specific learning disabilities, emotionally disturbed, multiple disabilities, mental retardation, other health impairments, physical impairments, autism, and traumatic brain injury. Public schools have responded vigorously to federal and state mandates requiring the provision of a free appropriate public education regardless of a child's disability. But before school districts can serve children, they must be found. Many children with disabilities are preschoolers. Parents may not be aware their child has a disability or that there are programs and services available. All information collected will be held in strict confidence and released to others only with parent permission or as allowed by law. For example, the school district will send records on request to a school district or other educational agency in which a student intends to enroll. The parents may have a copy of those records upon request. The school district will keep a record of all persons who review confidential records with the exception of authorized school employees, or other educational agency personnel. The school will also maintain a list of those employees who may have access to records.

## **Professional Development Coaches:**

The Professional Development Coach provides a framework of support and professional development for all teachers. The coaches create an atmosphere for collaboration and teamwork in helping to achieve the goals of the school. Professional development coaches provided various workshops to enhance academic and professional growth for the teachers and the schools. Several professional development opportunities included:

- Classroom management
- Engaging ways to teach in a remote environment
- Teaching in a Hybrid Model
- Technology Integration
- Effective asynchronous activities
- Building relationships with disengaged students

## **Resident Educator Program:**

The Ohio Resident Educator Program is a comprehensive, four-year initiative to assist beginning teachers with mentoring and professional development as they start their education careers. Ohio Revised Code 3319.223 and Ohio Administrative Code 3301-24-04 provide the basis for the Ohio Resident Educator Program and the requirement to successfully pass the Resident Educator Summative Assessment (RESA). When teachers successfully complete program requirements, including the RESA component, they become eligible for a professional teaching license. Teachers take the RESA in year 3 of the four-year program. A resident educator Mentor is provided to all teachers in the Resident Educator Program. Mentors and Resident Educators collaborate in the areas of instruction, assessment, lesson planning, and student achievement. Mentors offer onsite, individualized support to teachers in order to meet the needs of the teachers and their students.



# Special Services

Constellation Schools has a commitment to provide a free and appropriate public education for children with disabilities in accordance with state and federal laws, rules, and regulations. In that endeavor, the Educational Support Services Department works to assist all of our schools in the following specialized areas: Special Education, Psychological Services, Speech and Language Services, School Health Services, Occupational Therapy Services, and Physical Therapy Services. Additionally, the Educational Support Services Department assists each of our schools in creating and maintaining their Response to Intervention Process, Grade Level Intervention Teams, writing Section 504 Plans and Title I support.

## **Psychological Services**

Psychologists employed by Constellation Schools are Ohio Department of Education licensed and have specialized training in both psychology and education. They collaborate with parents and community agencies in order to coordinate services and interventions for students. They provide consultative services to educators and are members of the school-based intervention teams. School psychologists assist in assessment, eligibility, and program planning for students with disabilities as part of a range of special education services that Constellation Schools provides. Counseling may be delivered to special education students who demonstrate behavioral difficulties that impede their educational progress. Crisis intervention is also provided when necessary.

## **Speech & Language Services**

Good communication skills are important for speaking, listening, reading, writing, and learning at school. Some students have communication difficulties that can interfere with their ability to understand and participate in classroom instruction and impair their relationships with teachers and other children. Students who are formally identified as having communication problems that adversely affect their education are eligible to receive speech and/or language services from a speech & language pathologist. Speech & language services can be provided in a variety of ways, depending on the student's needs. Collaboration with teachers is important to ensure the student's communication goals are integrated into the classroom.



## **School Health Services**

Constellation Schools promotes health and wellness through a coordinated school health program. Our program focuses on collaboration between administrators, staff, families and the community to ensure that our students learn in a healthy school environment and obtain a state of health and wellness that will allow them to learn and achieve their maximum potential. School health services, one component of this coordinated school health program, is provided by professional school nurses. School nurses are committed to improving health outcomes, academic achievement,

And life-long achievement for all students at Constellation Schools. To that end, the school nurses of Constellation Schools follow the Standards of School Nursing Practice (National Association of School Nurses) and the state and federal laws that govern health services in schools.

## **Occupational Therapy Services**

School-based occupational therapy is available for students who are eligible for special education services. The profession of occupational therapy is concerned with a person's ability to participate in meaningful and purposeful daily life activities or "occupations." In the school setting, the role of the occupational therapist is to help children perform important learning and school-related activities in order to fulfill their role as students. Occupational therapy services support a child's participation in occupations of daily living (dressing, eating, etc.), academic areas, play, leisure, and social interactions. As part of the educational team within a school setting, occupational therapists work closely with the student, parents, and educators to identify the skills of the student, the demands of the environment, and appropriate solutions for interventions based on each child's unique needs.



# Technology

Using technology is an important part of life at Constellation Schools. We provide many technology tools to our students, to create a superior learning environment where they can explore new ways of working, delve into the practically unlimited encyclopedia of available knowledge, and understand the ways information is shared and problems are solved. Constellation recognizes the importance of learning in a safe environment, so we train our teachers to guide student learning, and back them up with a powerful set of filters and firewalls that keep our computer network focused on academic success.



We invest heavily into classroom technology, and are better equipped than most public schools. Nearly every classroom is outfitted with a large interactive board, where the teacher and students can view and manipulate information on a giant computer screen. Each interactive board can be used to share an internet web quest with the entire class, or allow individual students to physically interact with digital objects on screen, moving, changing, writing, and drawing to get the point of the lesson. They make a fantastic big screen for videos from Discovery Education too! This is a subscription to a wealth of videos and lesson materials from The Discovery Channel. We subscribe because we know children today are "digital natives" who respond better and engage more when multimedia is used for teaching.



Our teachers receive significant technology training, from after school workshops to one-on-one sessions with technology integration coaches. Constellation provides training in Google Apps for Education and other web-based tools to support our 1:1 laptop initiative. Constellation students in grades 2-12 participate in our 1:1 laptop program. They receive a laptop to use in school, and after extensive lessons on digital citizenship, online safety and laptop care, they earn the privilege to take their laptops home in the provided laptop bag. To prepare our kindergarteners and 1st graders, our students have access to either desktops or laptop to begin typing and computer basics. Our teachers integrate technology in many innovative and creative ways at all grade levels.

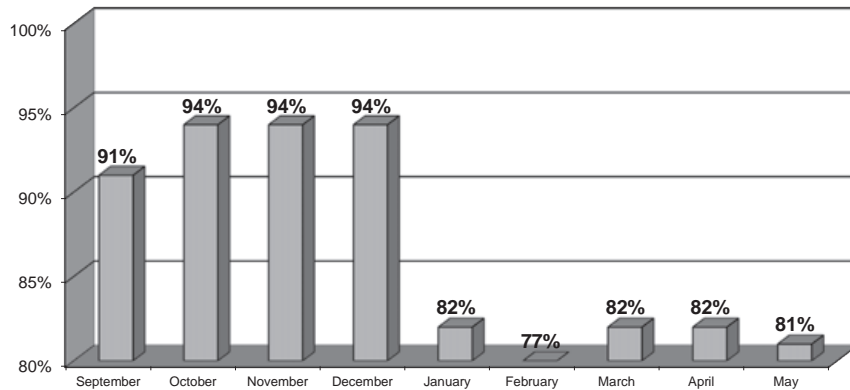
From our Mission Statement to our individual students, we strive to ensure the success of every child in our advancing technological society. As technology is becoming more and more a tool for 21st Century Learning. Constellation Schools is committed to providing every student a technology rich learning environment.





# Student Enrollment, Attendance & Demographics

**2020-2021 Student Monthly Attendance Percentage**



## About Our Students

Students at Westside Community School of the Arts are enrolled on a first come, first served basis during the first two weeks of December. Those students who are currently enrolled are ensured a place for the following school year if they enroll during these two weeks. If more students apply than there are spots, a lottery is held and a waiting list is formed.

### Student per Class/Teacher Ratio for 2020-2021

24 Students : 1 Teacher maximum

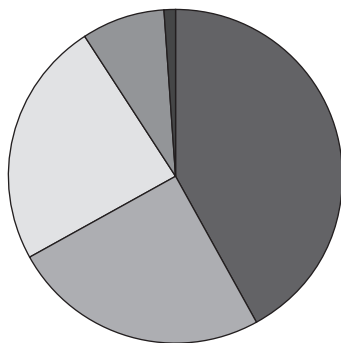
237 Students Enrolled

100% Eligible for Low Income

### Demographics

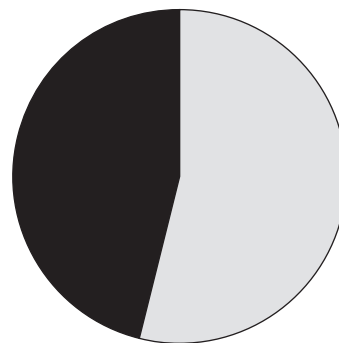
- 1% Asian
- 25% African American
- 24% Caucasian
- 42% Hispanic
- 8% Multiracial
- 0% Other

## Student Demographics



- Asian 1%
- African American 25%
- Hispanic 42%
- Multiracial 8%
- Caucasian 24%
- Other 0%

## Student Gender



- Male 46%
- Female 54%

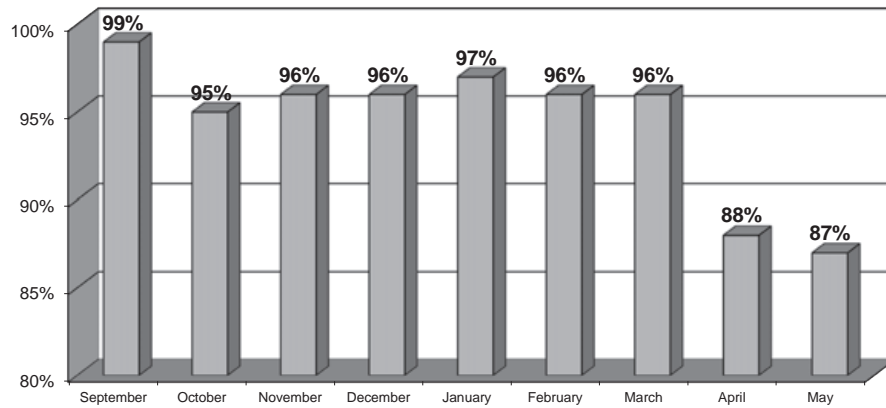
## Home School Notification

The school is a public school and students enrolled in and attending the school are required to take achievement tests and other examinations prescribed by law. In addition, there may be other requirements for students at the school that are prescribed by law. Students who have been excused from the compulsory attendance law for the purpose of home education as defined by the Administrative code shall no longer be excused for that purpose upon their enrollment in a community school.



# Westside Community School of the Arts Staff & Board

**2020-2021 Staff Monthly Attendance Percentage**

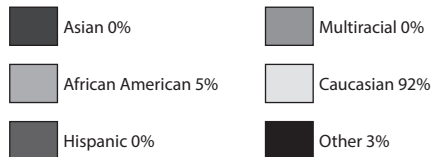
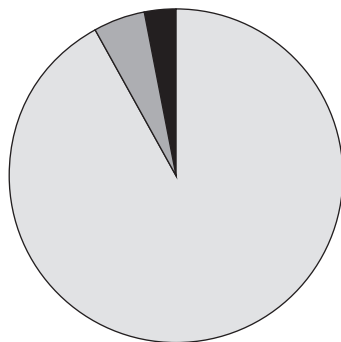


**Westside Community School of the Arts Staff**

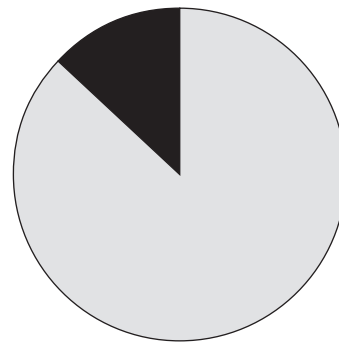
Deborah Rotolo, Principal  
 Howard Waugaman, Asst. Principal  
 Beth McKinney, Admin. Assistant  
 Siobhan Barnett, Admin. Assistant  
 Dawn Estep, Kindergarten  
 Brittany Liba, 1st Grade  
 Olivia Althen, 2nd Grade  
 Amy Simmons, 2nd/3rd  
 Sedona Strick, 4th Grade  
 Kayleigh McMullen, 5th/6th  
 Jessica Weishorn, 5th/6th  
 Isabella Borsellino, 7th/8th  
 Chelsea Kretz, 7th/8th  
 Kevin Warman, 7th/8th  
 Ashley Apone, Art  
 Bobbi Jo Boggs, Music  
 Carlton Calderhead, Orchestra/Music  
 Rebecca Olp, Band/Music  
 Michael Hall, Physical Education  
 Carrie Roberts, Intervention Specialist  
 Kaylin Rex, Intervention Specialist  
 Nancy Farley, Intervention Specialist  
 Candice Varner, Intervention Specialist

Nevada Hutkai, Title I  
 Elizabeth Hegberg, Title I  
 Lynne Pillivant, Title I  
 Nicole Tsangeos, Title 1  
 Kelly Schenk, Title 1  
 Danielle Gonzalez, Building Substitute  
 Hibah Ahmad, Nurse  
 Phebe Crouch, SLP  
 Maggie Kamenitsa, Counselor  
 Katherine Violette, Psychologist  
 Nicole Mathews, Paraprofessional  
 Florina Toma, Paraprofessional  
 David Smith, Technology Support  
 Lorene Johnson, Food Service  
 Michelle Lobue, Cleaner  
 Teresa Begg, Parapro

**Staff Demographics**



**Staff Gender**



**Westside Community School of the Arts Board**

**President**

Jerry Hilinski

**Members:** Jacqueline Grimm • Sean Mendise • Theresa Smith

Gary Coupe, Vice President



# NWEA Assessments

The NWEA assessments are: Measures of Academic Progress® (MAP®) – These computerized tests are adaptive and offered in Reading, Language Usage, and Mathematics. When taking a MAP® test, the difficulty of each question is based on how well a student answers all the previous questions.

~Percent Met Projection indicates the percent of students that met their individual student growth measure.

## Math: Math K-12

Grade (Spring 2021)	Growth Count‡	Comparison Periods						Growth Evaluated Against								
		Fall 2020			Spring 2021			Growth		Grade-Level Norms			Student Norms			
		Mean RIT	SD	Percentile	Mean RIT	SD	Percentile	Observed Growth	Observed Growth SE	Projected Growth	School Conditional Growth Index	School Conditional Growth Percentile	Count with Projection	Count Met Projection	Percent Met Projection	Student Median Conditional Growth Percentile
K	11	155.1	10.9	99	157.5	10.5	53	2	3.7	15.3	-5.74	1	11	2	18	5
1	21	180.2	24.8	99	168.3	10.2	10	-12	5.2	15.8	-11.03	1	21	1	5	1
2	31	176.7	9.6	61	178.8	8.2	4	2	1.7	14.4	-5.42	1	31	2	6	5
3	17	183.2	9.7	19	192.0	9.5	8	9	2.5	12.4	-1.69	5	17	6	35	18
4	21	188.3	12.0	5	191.0	9.2	1	3	2.2	10.3	-3.81	1	21	3	14	13
5	22	204.2	8.3	25	206.8	9.6	8	3	1.6	9.2	-2.82	1	22	5	23	10
6	29	205.0	9.1	11	207.4	9.4	3	3	1.5	7.6	-2.36	1	29	7	24	21
7	22	208.0	13.2	8	209.6	11.9	3	2	1.8	6.0	-2.15	2	22	5	23	22
8	36	212.5	12.5	10	214.3	11.7	6	2	1.2	5.2	-1.40	8	36	11	31	38

## Language Arts: Reading

Grade (Spring 2021)	Growth Count‡	Comparison Periods						Growth Evaluated Against								
		Fall 2020			Spring 2021			Growth		Grade-Level Norms			Student Norms			
		Mean RIT	SD	Percentile	Mean RIT	SD	Percentile	Observed Growth	Observed Growth SE	Projected Growth	School Conditional Growth Index	School Conditional Growth Percentile	Count with Projection	Count Met Projection	Percent Met Projection	Student Median Conditional Growth Percentile
K	11	152.4	15.8	99	152.2	11.8	43	0	5.5	14.8	-6.17	1	11	2	18	3
1	21	169.6	17.9	99	165.2	15.8	17	-4	5.3	16.7	-8.36	1	21	5	24	1
2	32	171.8	8.7	47	174.2	9.6	6	2	1.7	13.2	-4.30	1	32	5	16	12
3	17	187.4	16.4	54	194.5	11.1	36	7	4.0	10.5	-1.59	6	17	6	35	24
4	21	190.8	12.0	21	192.5	13.4	4	2	1.4	8.5	-3.28	1	21	3	14	21
5	22	200.4	16.7	28	204.1	17.2	16	4	2.8	6.7	-1.53	6	22	9	41	33
6	29	205.5	13.5	26	205.9	13.5	9	0	2.0	5.5	-2.91	1	29	10	34	22
7	7	*			*			*					*			
8	36	212.0	11.8	22	211.5	13.4	9	0	1.6	3.9	-2.20	1	36	11	31	29

Ohio Revised Code (ORC) 3314.03(D)(2) specifies that the sponsor of the school must “monitor and evaluate the academic and fiscal performance and the organization and operation of the community school on at least an annual basis.” In its evaluation of school performance, Buckeye Community Hope Foundation (BCHF) assess the performance of the school on each of the required Ohio School Report Card indicators and on performance measures listed in the charter contract. BCHF monitors the performance of the community school thru attendance at board meetings, bi-monthly visits to the school, monthly reviews of financial reports and quarterly reviews of academic progress reports along with a number of other reports relative to the school’s performance. Buckeye Community Hope Foundation served as the sponsor for Constellation Schools: Westside Community School of the Arts during the 2020-2021 school year, and found the school substantially compliant with the rules and regulations governing community schools. All community school sponsors are required to submit a written report of the evaluation results of the school’s academic, financial, and organization performance as well as the school’s legal compliance to the Ohio Department of Education and make the report available to parents of students enrolled in the community school. As such, an Annual Report regarding the performance of this school and other schools under the sponsorship of Buckeye Community Hope Foundation will be posted on our website [www.buckeyehope.org](http://www.buckeyehope.org), no later than November 30, 2021.



# State Report Card

STATE INDICATORS		PERCENTAGE OF STUDENTS AT AND ABOVE THE PROFICIENT LEVEL
		Constellation Schools: Westside Community School of the Arts
<b>3rd Grade Achievement</b>		
English Language Arts		29.4
Mathematics		17.6
<b>4th Grade Achievement</b>		
English Language Arts		23.8
Mathematics		0.0
<b>5th Grade Achievement</b>		
English Language Arts		50.0
Mathematics		4.3
Science		13.0
<b>6th Grade Achievement</b>		
English Language Arts		18.8
Mathematics		6.3
<b>7th Grade Achievement</b>		
English Language Arts		34.8
Mathematics		8.7
<b>8th Grade Achievement</b>		
English Language Arts		16.2
Mathematics		2.7
Science		13.9

**Performance Index** 39.1% The Performance Index measures the test results of every student, not just those who score proficient or higher. There are seven levels on the index and schools receive points for every student who takes a test. The higher the achievement level, the more points awarded in the school's index. This rewards schools and districts for improving the performance of all students, regardless of achievement level.

The state's education community experienced unprecedented disruptions during the 2020-2021 school year due to the COVID-19 pandemic. The report cards look different than in prior years. Even though a lot of data is available, it would not be fair to rate schools based on the data. Therefore, there are no ratings for the second year in a row. Ohio law, with recently passed House Bill 67 of the 134<sup>th</sup> General Assembly and the accountability waiver approved the U.S. Department of Education have had substantial impacts on the state's accountability system and Ohio School Report Cards for the 2020-2021 school year. The 2020-2021 report card will not have grades or ratings per Ohio law.



**Constellation Schools:**  
**Westside Community School of the Arts**

*"The Right Choice for Parents and a Real Chance for Children!"*

AUGUST						
S	M	T	W	T	F	S
1	2	3	4	5	6	7
8	9	10	11	12	13	14
15	16	17	18	19	20	21
22	23	24	25	26	27	28
29	30	31				

OCTOBER						
S	M	T	W	T	F	S
					1	2
3	4	5	6	7	8	9
10	11	12	13	14	15	16
17	18	19	20	21	22	23
24 31	25	26	27	28	29	30

# September 2021

Sunday      Monday      Tuesday      Wednesday      Thursday      Friday      Saturday

			1  In-Service, Collaboration Prof. Development <b>(No School for Students)</b>	2  In-Service, Collaboration Prof. Development <b>(No School for Students)</b>	3  <b>School Closed</b>	4
5	6  Labor Day <b>(School Closed)</b>	7  First Day of School	8	9	10	11

12	13	14	15	16	17	18
					In-Service, Collaboration Prof. Development <b>(No School for Students)</b>	
19	20	21	22	23	24	25
26	27	28	29	30		

2021 - **September**  
Character Trait of the Month: **Respect**





10	11	12	13	14	15	16
					In-Service, Collaboration Prof. Development <b>(No School for Students)</b>	
17	18	19	20	21	22	23
24	25	26	27	28	29	30
31						

2021 - **October**

Character Trait of the Month:

**Responsibility**





**Constellation Schools:**  
**Westside Community School of the Arts**

*"The Right Choice for Parents and a Real Chance for Children!"*

OCTOBER						
S	M	T	W	T	F	S
					1	2
3	4	5	6	7	8	9
10	11	12	13	14	15	16
17	18	19	20	21	22	23
24 <sup>24</sup> / <sub>31</sub>	25	26	27	28	29	30

DECEMBER						
S	M	T	W	T	F	S
			1	2	3	4
5	6	7	8	9	10	11
12	13	14	15	16	17	18
19	20	21	22	23	24	25
26	27	28	29	30	31	

# November 2021

Sunday      Monday      Tuesday      Wednesday      Thursday      Friday      Saturday

	1  In-Service, Collaboration Prof. Development <b>(No School for Students)</b>	2  In-Service, Collaboration Prof. Development <b>(No School for Students)</b>	3	4	5  First Quarter Ends	6
7	8	9	10	11	12  Building Work Day <b>(No School for Students)</b>	13

14	15	16	17	18	19	20
			Evening Parent/Teacher Conferences	Evening Parent/Teacher Conferences	<b>School Closed</b>	
21	22	23	24	25	26	27
	In-Service, Collaboration Prof. Development <b>(No School for Students)</b>	In-Service, Collaboration Prof. Development <b>(No School for Students)</b>	Thanksgiving Break <b>(No School for Students)</b>	Thanksgiving Break <b>(No School for Students)</b>	Thanksgiving Break <b>(No School for Students)</b>	
28	29	30				

2021 - **November**

Character Trait of the Month:

**Citizenship**





12	13	14	15	16	17	18
19	20 Winter Break (No School for Students)	21 Winter Break (No School for Students)	22 Winter Break (No School for Students)	23 Winter Break (No School for Students)	24 Winter Break (No School for Students)	25
26	27 Winter Break (No School for Students)	28 Winter Break (No School for Students)	29 Winter Break (No School for Students)	30 Winter Break (No School for Students)	31 Winter Break (No School for Students)	

2021 - **December**

Character Trait of the Month:

**Compassion**





**Constellation Schools:**  
**Westside Community School of the Arts**

*"The Right Choice for Parents and a Real Chance for Children!"*

DECEMBER						
S	M	T	W	T	F	S
			1	2	3	4
5	6	7	8	9	10	11
12	13	14	15	16	17	18
19	20	21	22	23	24	25
26	27	28	29	30	31	

FEBRUARY						
S	M	T	W	T	F	S
		1	2	3	4	5
6	7	8	9	10	11	12
13	14	15	16	17	18	19
20	21	22	23	24	25	26
27	28					

# January 2022

Sunday      Monday      Tuesday      Wednesday      Thursday      Friday      Saturday

						1
2	3	4	5	6	7	8
	In-Service, Collaboration Prof. Development <b>(No School for Students)</b>					

9	10	11	12	13	14	15
16	17 Martin Luther King Day <b>(School Closed)</b>	18	19	20	21 In-Service, Collaboration Prof. Development <b>(No School for Students)</b>	22
23	24	25	26	27	28	29
30	31		2nd Quarter Ends		Building Work Day <b>(No School for Students)</b>	

2022 - **January**

Character Trait of the Month:

**Fairness & Cooperation**





13	14	15	16	17	18	19
			Evening Parent/Teacher Conferences	Evening Parent/Teacher Conferences	<b>School Closed</b>	
20	21	22	23	24	25	26
	Presidents' Day <b>(School Closed)</b>					
27	28					

2022 - **February**  
 Character Trait of the Month: **Courage**





**Constellation Schools:**  
**Westside Community School of the Arts**

*"The Right Choice for Parents and a Real Chance for Children!"*

FEBRUARY						
S	M	T	W	T	F	S
		1	2	3	4	5
6	7	8	9	10	11	12
13	14	15	16	17	18	19
20	21	22	23	24	25	26
27	28					

APRIL						
S	M	T	W	T	F	S
					1	2
3	4	5	6	7	8	9
10	11	12	13	14	15	16
17	18	19	20	21	22	23
24	25	26	27	28	29	30

# March 2022

Sunday      Monday      Tuesday      Wednesday      Thursday      Friday      Saturday

		1	2	3	4	5
6	7	8	9	10	11	12
					In-Service, Collaboration Prof. Development <b>(No School for Students)</b>	

13	14	15	16	17	18	19
	Spring Break (No School for Students)	Spring Break (No School for Students)	Spring Break (No School for Students)	Spring Break (No School for Students)	Spring Break (No School for Students)	
20	21	22	23	24	25	26
27	28	29	30	31		

2022 - **March**

Character Trait of the Month:

**Honesty**





**Constellation Schools:**  
**Westside Community School of the Arts**

*"The Right Choice for Parents and a Real Chance for Children!"*

MARCH						
S	M	T	W	T	F	S
		1	2	3	4	5
6	7	8	9	10	11	12
13	14	15	16	17	18	19
20	21	22	23	24	25	26
27	28	29	30	31		

MAY						
S	M	T	W	T	F	S
1	2	3	4	5	6	7
8	9	10	11	12	13	14
15	16	17	18	19	20	21
22	23	24	25	26	27	28
29	30	31				

# April 2022

Sunday      Monday      Tuesday      Wednesday      Thursday      Friday      Saturday

					1	2
					3rd Quarter Ends	
3	4	5	6	7	8	9
	Building Work Day (No School for Students)					

10	11	12	13	14	15	16
17	18	19	20	21	22	23
24	25	26	27	28	29	30

Good Friday  
**(School Closed)**

**(School Closed)**

2022 - **April**

Character Trait of the Month:

**Perseverance**





**Constellation Schools:**  
**Westside Community School of the Arts**

*"The Right Choice for Parents and a Real Chance for Children!"*

APRIL						
S	M	T	W	T	F	S
					1	2
3	4	5	6	7	8	9
10	11	12	13	14	15	16
17	18	19	20	21	22	23
24	25	26	27	28	29	30

JUNE						
S	M	T	W	T	F	S
			1	2	3	4
5	6	7	8	9	10	11
12	13	14	15	16	17	18
19	20	21	22	23	24	25
26	27	28	29	30		

# May 2022

Sunday      Monday      Tuesday      Wednesday      Thursday      Friday      Saturday

1	2	3	4	5	6	7
8	9	10	11	12	13	14
					In-Service, Collaboration Prof. Development <b>(No School for Students)</b>	

15	16	17	18	19	20	21
22	23	24	25	26	27	28
29	30	31				

In-Service, Collaboration  
Prof. Development  
**(No School for Students)**

Memorial Day  
**(School Closed)**

2022 - **May**

Character Trait of the Month:

**Sportsmanship**





**Constellation Schools:**  
**Westside Community School of the Arts**

*"The Right Choice for Parents and a Real Chance for Children!"*

MAY						
S	M	T	W	T	F	S
1	2	3	4	5	6	7
8	9	10	11	12	13	14
15	16	17	18	19	20	21
22	23	24	25	26	27	28
29	30	31				

JULY						
S	M	T	W	T	F	S
					1	2
3	4	5	6	7	8	9
10	11	12	13	14	15	16
17	18	19	20	21	22	23
24 31	25	26	27	28	29	30

# June 2022

Sunday      Monday      Tuesday      Wednesday      Thursday      Friday      Saturday

			1	2	3	4
				Last Day of School for Students 4th Quarter Ends	Building Work Day	
5	6	7	8	9	10	11

12	13	14	15	16	17	18
19	20	21	22	23	24	25
26	27	28	29	30		

2022 - **June**

Character Trait of the Month:

**Loyalty**





**Constellation Schools:**  
**Westside Community School of the Arts**

*"The Right Choice for Parents and a Real Chance for Children!"*

JUNE						
S	M	T	W	T	F	S
			1	2	3	4
5	6	7	8	9	10	11
12	13	14	15	16	17	18
19	20	21	22	23	24	25
26	27	28	29	30		

AUGUST						
S	M	T	W	T	F	S
	1	2	3	4	5	6
7	8	9	10	11	12	13
14	15	16	17	18	19	20
21	22	23	24	25	26	27
28	29	30	31			

# July 2022

Sunday      Monday      Tuesday      Wednesday      Thursday      Friday      Saturday

					1	2
3	4 Independence Day	5	6	7	8	9

10	11	12	13	14	15	16
17	18	19	20	21	22	23
24	25	26	27	28	29	30
31						

2022 - **July**

Character Trait of the Month:

**Respect**





14	15	16	17	18	19	20
21	22	23	24	25	26	27
28	29	30	31			

2022 - **August**

Character Trait of the Month:

**Respect**





# Constellation Schools Westside Community School of the Arts Financial Report for Fiscal Year 2021

The Cash Basis Report of Revenues and Expenditures for the Year ended June 30, 2021 reflects the activities of Constellation Schools: Westside Community School of the Arts during the year. The information provided below refers to this report and the accompanying graphs.

- Highlights for the Year:**
- ✓ 13th annual audit issued for 2020 with an “unqualified opinion” (best opinion available)
  - ✓ In Fiscal Year 2021 the school continued the 1 to 1 computer program for grades 2 through 8.

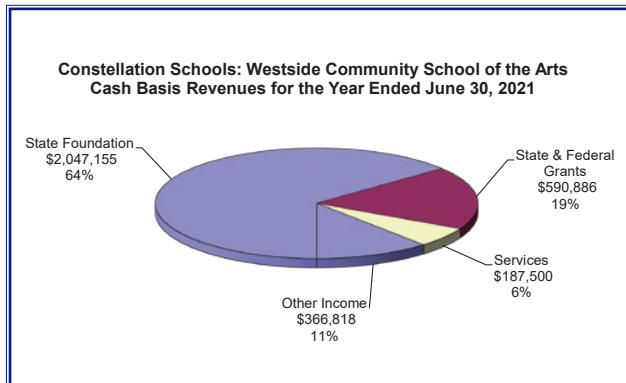
## Revenues

The largest source of operating revenue (64%) comes from the State of Ohio School Foundation Program. This funding is earned at a base rate of \$6,020 for each student enrolled during the year. Additional funds are provided for the special needs of students, the poverty level of the community in which each student resides, and other adjustments. Casino tax proceeds are also included in this category.

State and Federal Grants (19%) supplement school operations for specific purposes. The school received grants for Title I Intervention, ESSER, Professional Development, Special Education, Child Nutrition Services, and Electronic Communications.

Services (6%) were provided to various Constellation Schools for shared staff.

Other income (11%) includes interest earned on bank account activity, services provided to other Constellation Schools for space, field trip collections, student fees, contributions and other miscellaneous items.



Constellation Schools: <b>Westside Community School of the Arts</b> Cash Basis Statement of Revenues and Expenditures for the Year ended June 30, 2021 (Unaudited)	
<b>Beginning Cash - July 1, 2020</b>	<b>\$ 810,133</b>
<b>Revenues</b>	
State Foundation	\$ 2,047,155
State & Federal Grants	\$ 590,886
Services	\$ 187,500
Other Income	\$ 366,818
<b>Total Revenue</b>	<b>\$ 3,192,358</b>
<b>Expenditures</b>	
Personnel	\$ 1,452,977
Retirement & Benefits	\$ 501,924
Purchased Services	\$ 1,097,935
Supplies & Materials	\$ 183,624
Capital Outlay	\$ 197
Other	\$ 73,865
<b>Total Expenditures</b>	<b>\$ 3,310,522</b>
<b>Ending Cash - June 30, 2021</b>	<b>\$ 691,969</b>

## Additional Information

A more detailed set of financial statements may be obtained by calling (216)712-7600, writing to the Treasurer, Constellation Schools 5730 Broadview Road, Parma, Ohio 44134 or by e-mail at the following address: [zito.caroline@constellationschools.com](mailto:zito.caroline@constellationschools.com).

During the fall of 2021 an audit of the school's financial records for the year ended June 30, 2021 will be completed. The audit report should be available during the winter at the above address and on the Auditor of State's website: [www.auditor.state.oh.us](http://www.auditor.state.oh.us).

## Expenditures

Personnel services, combined with retirement and benefits, accounted for 59% of the expenditures for the year. These expenditures include principal, support staff, teachers, state retirement systems, employment taxes, and health insurances.

Purchased services (33%) include expenditures for student support services (speech, psychologist, health, physical therapy and occupational therapy), contracted substitutes, special education services, field trips, professional development, management services, sponsor services, test scoring, data reporting, facility operations, equipment leases, telephone, postage, travel, marketing, printing, food services, and other services.

Supplies and materials (6%) include instructional supplies, testing materials, office supplies, medical supplies, instructional software, online instruction, and maintenance supplies.

Capital Outlay (<1%) includes purchases of classroom technology, equipment and furniture and building improvements.

Other (2%) includes audit fees, debt service, insurances (property, liability, fidelity bond, directors & officers), dues and subscriptions, and other miscellaneous.

