



Constellation Schools:

Madison Community Elementary

"The Right Choice For Parents and a Real Chance for Children!"

2022-2023
School Calendar

Back to Basics

A YEAR TO GROW



2021-2022
Annual Report



Mission, Vision, Value Statements & Slogans

Constellation Schools Mission

Constellation Schools provides every child an opportunity to obtain an excellent education built on a foundation of character education for life long success.

Value

We believe all children deserve an exceptional education in a safe, caring, nurturing environment.

We will create a student focused community of global learners where children excel, are responsible, ethical world citizens, prepared for success in career, college and life.

Vision

Constellation Schools will create an exceptional learning community characterized by high expectations and academic excellence.

Our students will be actively engaged life-long global learners and be responsible, compassionate involved world citizens.

Our families will support their children and school as important, welcomed members of our diverse learning community.

Our teachers will be inspiring, compassionate and committed to the success of every student.

Our leaders will provide superior service, resources, and support to engage the community and ensure the success of every student.

Our Board of Directors will guide our school in creating a culture of excellence that ensures the success of every student.



ACCEL Schools Mission

Our mission is to provide quality education, anywhere in the world, in the modality that best meets the needs of each student.

At ACCEL Schools, we believe in creating successful schools one child at a time. Our focus on tailoring the learning experience to each individual makes us a different kind of K-12 education management organization. Our network of charter schools is proving that it's not where you start, it's where you're going that counts. Every ACCEL school is a unique reflection of its community and students, with its own identity and vision. All of our schools hold five common principles at their core to provide a strong foundation for learning. ACCEL schools are distinguished by:

Safe & Caring—We care about the well-being and development of each child. We are interested in each child's future. Secure and orderly learning environments are our top priority. We address every aspect of security, from building codes and safety procedures, to codes of conduct and character education.

Individualized Learning—We care about every student and are committed to preparing children for lifelong success. We know that each student has unique needs, and our educational approach ensures we provide an educational path that engages all students.

Academic Excellence—We bring great teachers, proven educational practices, and rigorous standards to every classroom. With a network of more than 25 schools, we share best practices in curriculum design, teacher training, and integrated technology to drive continuous gains in academic performance.

Community Partnership—those who live and work in a community know it best. ACCEL Schools honors your values and partners with your school, community, and government leaders to serve your community.

Accessible to All—Our driving principle is to bring great schools to communities everywhere. We foster a culture that is reflective of local values and interests, and are open to all students.



Constellation Schools & Its History

Constellation Schools: A Beginning

Constellation Schools evolved from the desire of a small group of individuals to open a Montessori school in Cleveland's Old Brooklyn neighborhood. After a lot of hard work and many community meetings held over the course of two years, a change in Ohio law establishing community schools (or "charter schools") lead to the creation of Old Brooklyn Montessori School (OBCE). OBCE opened in August of 1998 with three employees and 27 students.

The Purpose of Constellation Schools

Constellation Schools is an umbrella management organization, providing business, administrative, educational and financial support services to its managed schools. This structure allows these overhead expenses to be spread over all the schools, reducing the financial burden on individual schools. With Constellation performing most of the administrative functions, the building principals and teachers are freed up to do what they do best – educate children. Administrative centralization also eliminates duplicative services at each school. This type of efficiency is often used in business to increase efficiency. Within Constellation, it serves to improve performance and accountability. As the schools benefit from administrative centralization, more resources are available for students and teachers, resulting in more opportunities for students and better schools.

Success of the Organization

In twenty years, Constellation Schools has grown from one school, 27 students, and 3 employees to fifteen schools educating more than 4,800 students and over 550 employees. A total of eleven buildings are owned by the schools which occupy them evidencing their acceptance within their communities and their financial strength.

Conclusion

The founders of Constellation have established a community of schools that benefit from outstanding participation and support from staff, students and parents. Constellation has developed a reputation for its high standards and dedicated teachers, and for delivering a quality educational program in a safe and pleasant environment.

Constellation Schools admits students of any race, color, national or ethnic origin, and will not discriminate on the basis of race, religion, color, national origin, disability, age or gender in the administration of its educational policies, admissions policies, hiring, and employee retention policies, scholarships and loan programs, and athletic and other school administered programs.



Who We Are– ACCEL Schools

Founded in 2014, ACCEL Schools is a K-12 public charter school management organization (CMO) serving students across the United States in brick-and-mortar, virtual, and hybrid school settings. We focus on improving academic outcomes of students regardless of geographic location or socioeconomic factors.

Our founders are the early pioneers of online learning. The leadership team at ACCEL Schools has a combined 1000+ years of experience as global school management operators with expertise in curriculum research and design, assessment, student support services, and education consulting. Our entire team fundamentally believes that all children deserve a great education and students should be supported as they pursue a wide variety of post-secondary options. Our robust technology increases engagement, access to resources, efficiencies, and academic results helping our students become productive global citizens.

Better Schools for Students, Families and Communities Everywhere

ACCEL Schools transforms education and brings new opportunities to students and families of all backgrounds. We partner with communities across the country to create safe and supportive learning environments where all students can grow socially and academically. At ACCEL Schools, students benefit from a comprehensive set of proven educational practices personalized to their unique needs.

The ACCEL Difference

At ACCEL Schools, we believe in creating successful schools one child at a time. Our focus on tailoring the learning experience to each individual makes us a different kind of organization. Our network of schools is proving that it's not where you start, it's where you are going that counts. With some of the most successful schools in the country as a part of our network, and a wealth of academic and operational expertise, we can find the right solution for your child.



Chairman's Message

Top Ranked Schools in Ohio by U.S. News & World Report

By: Glen Justice | November 11, 2021



U.S. News & World Report released rankings for K-8 public schools in Ohio last month, showing the best public elementary and middle schools in the state. The rankings are part of a nationwide effort that ranked more than 61,000 schools across the U.S. using performance on state tests. The result is a set of comprehensive rankings for K-8 public schools that include information on school size, student-to-teacher ratios and other important data. The Ohio rankings are available for more than 2,400 public elementary and middle schools, including charter schools. To read the article on U.S. News & World Report and view the full list of top ranked Ohio schools, please click the following link: <https://www.usnews.com/education/k12/articles/top-ranked-elementary-and-middle-schools-in-ohio>

Here is the full list of our elementary and middle schools ranked by U.S. News & World Report.

Elementary Schools

Constellation: Westpark Community Elementary

#3 in Ohio Charter Elementary Schools

#37 in Ohio Elementary Schools

Constellation: Lorain Community Elementary

#9 in Ohio Charter Elementary Schools

#558 in Ohio Elementary Schools

Constellation: Puritas Community Elementary

#21 in Ohio Charter Elementary Schools

#738 in Ohio Elementary Schools

Constellation:

Westside Community School of the Arts

#27 in Ohio Charter Elementary Schools

#789 in Ohio Elementary Schools

Constellation: Old Brooklyn Community Elementary

#29 in Ohio Charter Elementary Schools

#794 in Ohio Elementary Schools

Constellation: Elyria Community

#44 in Ohio Charter Elementary Schools

#1015 in Ohio Elementary Schools

Elementary Schools

Constellation: Parma Community

#56 in Ohio Charter Elementary Schools

#1205 in Ohio Elementary Schools

Constellation: Eastside Arts Academy

#89 in Ohio Charter Elementary Schools

#1228-1637 in Ohio Elementary Schools

Constellation: Stockyard Community Elementary

#91 in Ohio Charter Elementary Schools

#1228-1637 in Ohio Elementary Schools

Constellation: Madison Community Elementary

#97 in Ohio Charter Elementary Schools

#1228-1637 in Ohio Elementary Schools

Middle Schools

Constellation: Elyria Community

#3 in Ohio Charter Middle Schools

#134 in Ohio Middle Schools

Constellation: Stockyard Community Middle

#9 in Ohio Charter Middle Schools

#346 in Ohio Middle Schools

Middle Schools

Constellation: Lorain Community Middle

#13 in Ohio Charter Middle Schools

#413 in Ohio Middle Schools

Constellation: Puritas Community Middle

#21 in Ohio Charter Middle Schools

#536 in Ohio Middle Schools

Constellation: Westpark Community Middle

#36 in Ohio Charter Middle Schools

#717 in Ohio Middle Schools

Constellation: Parma Community

#39 in Ohio Charter Middle Schools

#736 in Ohio Middle Schools

Constellation:

Westside Community School of the Arts

#40 in Ohio Charter Middle Schools

#742 in Ohio Middle Schools

Constellation: Old Brooklyn Community Middle

#48 in Ohio Charter Middle Schools

#746-994 in Ohio Middle Schools



Directors & Administrative Staff

Sarah O'Bryan
Superintendent

Chad Carr
Executive Director

Marybeth Oko
Executive Assistant & Compliance Coordinator

Dave Massa
Treasurer

Connie Britton
Katherine Pacheco
Accounts Payable Specialist

Cassandra Horwedel
Human Resource Manager

Aracelis Colon
Senior Payroll Administrator

Erica Medina
HR Coordinator

Brian Preseren
Business & Safety Manager

Garrick Lukich
Facilities Operations Manager

Jeff Morris
Lead Maintenance Technician

Justin Reffert
Ron Tomola
Patrick Tanner
Maintenance Technician

Leslie Wegling
Floor Maintenance Technician

Elizabeth Long
Receptionist

Jody Schenfield
HR Office Assistant

Laura Survance
Technology Coordinator

Lisa Geyer
Webmaster & Accounts Administrator

Benjamin Orr
Sr. Systems Administrator

David Colon
Education Technology Lead

Lisa Vinarcik
Manager of Marketing & Public Relations

Dominic Robinson
Assistant Manager of School Data, Records & Food Service Operations

Tiffany Miller
Administrative Assistant of School Data, Records & Food Service Operations

Deborah Piazza
Education Program Coordinator

Christine Garten
Curriculum & Instruction Program Coordinator

Kathryn Taylor
Intervention Data Coach

Deborah Heider
Title I Coach

Brittany Lester
Special Education Program Coordinator

Jillian Lukich
Support Services Program Coordinator

Julia Howerton
School Nurse Program Coordinator

FROM THE DESK OF OUR SUPERINTENDENT



Welcome to Constellation Schools, the premier charter school organization in Ohio! Entering our 24th year of excellence in education, our network of 15 community schools serves nearly 4,000 students in the communities of Cleveland, Lorain, Elyria, and Parma.

From the time we opened our first school we believed in establishing communities of learners where teachers and administrators, in partnership with our parents work together to ensure every child receives the high-quality education he or she deserves. In our technology-rich environments, our teachers and caring support staff are responsible for the success of our schools and the students they serve. We are proud of the collaborative work environments cultivated in our schools and believe the culture is a product of the commitment and dedication each staff member has made to our mission and vision. Our learning community is characterized by high expectations, academic excellence and as a result, is *"The Right Choice for Parents and a Real Chance for Children!"*



List of Schools

Constellation Schools Grades K-4 **Old Brooklyn Community Elementary**

(1998)
Cherie Kaiser, Principal
4430 State Road, Cleveland, Ohio 44109
216.661.7888 • 216.661.5975 fax

Westpark Community Elementary

(2001)
Jason Wilson, Principal
16210 Lorain, Cleveland, Ohio 44111
216.688.0272 • 216.688.0273 fax

Lorain Community Elementary

(2001)
Jordan McHugh, Principal
Courtney Cheers, Assistant Principal
1110 West 4th Street, Lorain, Ohio 44052
440.204.2130 • 440.204.2134 fax

Puritas Community Elementary

(2003)
Vicki Wasilewski, Principal
Angela Waggamen, Assistant Principal
17720 Puritas Avenue, Cleveland, Ohio 44135
216.688.0680 • 216.688.0609 fax

Constellation Schools Grades K-8 **Madison Community Elementary**

(2004)
Kevin Sheridan Principal
Tonya Antill, Assistant Principal
2015 West 95th Street, Cleveland, Ohio 44102
216.651.5212 • 216.651.9040 fax

Constellation Schools Grades K-6 **Stockyard Community Elementary**

(2004)
Stan Koterba, Principal
Matthew Black, Assistant Principal
3200 West 65th Street, Cleveland, Ohio 44102
216.651.5143 • 216.651.9515 fax

Eastside Arts Academy

(2011)
Katherine Rybak, Principal
6700 Lansing Avenue, Cleveland, Ohio 44105
216.441.9830 • 216.441.9834 fax

Constellation Schools Grades 7-8 **Stockyard Community Middle**

(2010)
Stan Koterba, Principal
Matthew Black, Assistant Principal
3200 West 65th Street, Cleveland, Ohio 44102
216.961.5052 • 216.961.9227 fax

Constellation Schools Grades K-8 **Elyria Community**

(2001)
Brian Belmont, Principal
Kristine Burns, Assistant Principal
Elementary 300 North Abbe Road, Elyria, Ohio 44035
440.366.5225 • 440.366.6280 fax
Middle 336 South Logan Street, Elyria, Ohio 44035
440.365.0390 • 440.365.0397 fax

Constellation Schools Grades 5-8 **Old Brooklyn Community Middle**

(2006)
Kristina Scott, Principal
4430 State Road, Cleveland, Ohio 44109
216.351.0280 • 216.661.5975 fax

Westpark Community Middle

(2006)
Deborah Rotolo, Principal
16210 Lorain, Cleveland, Ohio 44111
216.251.7200 • 216.251.0355 fax

Puritas Community Middle

(2006)
Vicki Wasilewski, Principal
Angela Waggamen, Assistant Principal
17720 Puritas Avenue, Cleveland, Ohio 44135
216.251.1596 • 216.251.3540 fax

Lorain Community Middle

(2006)
Jordan McHugh, Principal
Courtney Cheers, Assistant Principal
1110 West 4th Street, Lorain, Ohio 44052
440.242.2023 • 440.204.2134 fax

Constellation Schools Grades K-8 **Westside Community School of the Arts**

(2007)
Howard Waugaman, Principal
Anna Deitsche, Assistant Principal
3727 Bosworth, Cleveland, Ohio 44111
216.688.1900 • 216.688.1902 fax

Constellation Schools Grades K-12 **Parma Community**

(2000)
Bob Klinar, Principal

Ciara Gaspar, Assistant Principal
Parma Community Elementary–Day Drive
7667 Day Drive, Parma, Ohio 44129
440.888.5490 • 440.888.5890 fax

David Kassel Assistant Principal
Parma Community Pearl Road Elementary
6125 Pearl Road, Parma Heights, Ohio 44130
440.345.5960 • 440.882.6169 fax

William Bogan, Assistant Principal
Parma Community Intermediate
3421 Snow Road, Parma, Ohio 44134
440.340.4654 • 440.340.4668 fax

Todd Luecke, Assistant Principal
Jade Woodson, Assistant Principal
Eric Butler, Assistant Principal
Middle and High
5983 West 54th Street, Parma, Ohio 44129
440.845.2587 • 440.845.2834 fax



Parent Notification System



The Trusted Platform
for School Community Engagement

Parents and Guardians

You can take advantage of our Text Messaging Service

Our school utilizes the SchoolMessenger system to deliver text messages, straight to your mobile phone with important information about events, school closings, safety alerts and more.*

You can participate in this free service* just by sending a text message of "Y" or "Yes" to our school's short code number, **67587**.

You can also opt out of these messages at any time by simply replying to one of our messages with "Stop".

SchoolMessenger is compliant with the Student Privacy Pledge™, so you can rest assured that your information is safe and will never be given or sold to anyone.



Constellation Schools will be implementing a new notification system through SchoolMessenger. This system will have the ability to notify parents through voice calls, e-mail and SMS (text messaging). Please visit the school office to make sure your cell phone is on record before you opt-in to the SMS feature.

Look for more information to follow!

Thank you!

Opt-In from
your mobile
phone now!



Just send
"Y" or "Yes"
to 67587

i Information on SMS text messaging and Short Codes:

SMS stands for Short Message Service and is commonly referred to as a "text message". Most cell phones support this type of text messaging. Our notification provider, SchoolMessenger, uses a true SMS protocol developed by the telecommunications industry specifically for mass text messaging, referred to as "short code" texting. This method is fast, secure and highly reliable because it is strictly regulated by the wireless carriers and only allows access to approved providers. If you've ever sent a text vote for a TV show to a number like 46999, you have used short code texting.

*Terms and Conditions – Message frequency varies. Standard message and data rates may apply. Reply HELP for help. Text STOP to cancel. Mobile carriers are not liable for delayed or undelivered messages. See schoolmessenger.com/txt for more info.



©2016 West Corporation [10242016]. All rights reserved. May not be reproduced without expressed written permission.

If you have any questions or need further assistance, please e-mail or call Lisa Vinarcik, Manager of Marketing and PR at Vinarcik.lisa@constellationschools.com or 216-712-7600 extension 50107.



Educational Plans/Programs

Our curriculum is aligned with the Ohio Academic Content Standards and is designed to guide students toward their grade level goals. Content areas include: reading/language arts, math, science, social studies, art, music, physical education/health and technology. During the 2021/2022 academic year, all Constellation Schools utilized the Ohio Learning Standards to prepare our students for the Ohio State Assessments. Teachers made the necessary adjustments to our current curriculum in an effort to stay aligned with the state standards.

Title 1 services (small grouping with a reading/math teacher) and Special Education Services are implemented to assist students who qualify for special services. Numerous online programs are utilized as part of our Response to Intervention program in an effort to move children through the intervention pyramid.



Our 1:1 laptop program increases the use of technology to engage students and improve academic achievement. In addition to G Suites for Education (Google Apps), the use of our online curriculum and other educational apps provided our students with personalized and differentiated learning activities. From practicing basic keyboarding and mouse skills to learning to code and screencast, our students honed transferable technical skills necessary for future success. Our technology integration coaches provided support through lesson planning, co-teaching, and professional development sessions. As a team, teachers and coaches continue to strive for a balanced effective technology usage.

Teachers establish high academic measures for achievement and behavior in their classrooms. Through age appropriate teaching methods, all students will reach or exceed their maximum potential. The cornerstone of our academic program is emphasized through Character Education, which permeates throughout our curriculum. All of our classrooms and hallways have a variety of posters and bulletin boards that define acceptable character. Good behavior and appropriate manners from everyone is a constant expectation of our students and staff. Character education enhances our educational plan while securing a safe and nurturing learning environment for all of our students.

Afterschool clubs, activities and tutoring are offered in a variety of our schools addressing such interests as: drama, basketball, volleyball, creative writing, reading and the arts. All of these programs are organized and facilitated by staff who go above and beyond to provide our students with a well-rounded education rich with opportunities.





Professional Development

Professional Development

Constellation Schools are committed to improving student learning by providing professional development activities that are research-based and relevant to individual school's needs. The professional development will be sustained over time, and incorporate technology so that each participant will have the confidence and capabilities to provide rigorous instruction that challenges students' thinking. Through professional development we can ensure all students reach their full potential to contribute to a democratic society including maximizing each student's abilities and encouraging self-reflection and a lifelong love for learning.

Our Local Professional Development Committee (LPDC) follows all state requirements to renew teaching/principal certificates and licensures.

Several Professional development opportunities were provided before the start of the school year such as:

- PBIS
- Technology integration
- Special education procedures
- Curriculum
- Health training
- Classroom management
- Test taking strategies

Search for Children with Disabilities Underway-School districts across the state of Ohio are participating in an effort to identify, locate, and evaluate all children from birth through 21 years of age who may have disabilities. Disability, in this instance, means such conditions as hearing impairments, visual impairments, speech or language impairments, specific learning disabilities, emotionally disturbed, multiple disabilities, mental retardation, other health impairments, physical impairments, autism, and traumatic brain injury. Public schools have responded vigorously to federal and state mandates requiring the provision of a free appropriate public education regardless of a child's disability. But before school districts can serve children, they must be found. Many children with disabilities are preschoolers. Parents may not be aware their child has a disability or that there are programs and services available. All information collected will be held in strict confidence and released to others only with parent permission or as allowed by law. For example, the school district will send records on request to a school district or other educational agency in which a student intends to enroll. The parents may have a copy of those records upon request. The school district will keep a record of all persons who review confidential records with the exception of authorized school employees, or other educational agency personnel. The school will also maintain a list of those employees who may have access to records.

Coaches:

The Coach in the building provides a framework of support and professional development for all teachers. The coaches create an atmosphere for collaboration and teamwork in helping to achieve the goals of the school. The coaches provided various workshops to enhance academic and professional growth for the teachers and the schools. Several professional development opportunities included:

- Curriculum support
- Classroom management
- Data analysis
- Student motivation
- Writing across the curriculum
- Technology integration
- Improving reading and math instruction

Resident Educator Program:

The Ohio Resident Educator Program is a comprehensive, four-year initiative to assist beginning teachers with mentoring and professional development as they start their education careers. Ohio Revised Code 3319.223 and Ohio Administrative Code 3301-24-04 provide the basis for the Ohio Resident Educator Program and the requirement to successfully pass the Resident Educator Summative Assessment (RESA). When teachers successfully complete program requirements, including the RESA component, they become eligible for a professional teaching license. Teachers take the RESA in year 3 of the four-year program. A resident educator Mentor is provided to all teachers in the Resident Educator Program. Mentors and Resident Educators collaborate in the areas of instruction, assessment, lesson planning, and student achievement. Mentors offer onsite, individualized support to teachers in order to meet the needs of the teachers and their students.



Special Services

Constellation Schools has a commitment to provide a free and appropriate public education for children with disabilities in accordance with state and federal laws, rules, and regulations. In that endeavor, the Educational Support Services Department works to assist all of our schools in the following specialized areas: Special Education, Psychological Services, Speech and Language Services, School Health Services, Occupational Therapy Services, and Physical Therapy Services. Additionally, the Educational Support Services Department assists each of our schools in creating and maintaining their Response to Intervention Process, Grade Level Intervention Teams, writing Section 504 Plans and Title I support.

Psychological Services

Psychologists employed by Constellation Schools are Ohio Department of Education licensed and have specialized training in both psychology and education. They collaborate with parents and community agencies in order to coordinate services and interventions for students. They provide consultative services to educators and are members of the school-based intervention teams. School psychologists assist in assessment, eligibility, and program planning for students with disabilities as part of a range of special education services that Constellation Schools provides. Counseling may be delivered to special education students who demonstrate behavioral difficulties that impede their educational progress. Crisis intervention is also provided when necessary.

Speech & Language Services

Good communication skills are important for speaking, listening, reading, writing, and learning at school. Some students have communication difficulties that can interfere with their ability to understand and participate in classroom instruction and impair their relationships with teachers and other children. Students who are formally identified as having communication problems that adversely affect their education are eligible to receive speech and/or language services from a speech & language pathologist. Speech & language services can be provided in a variety of ways, depending on the student's needs. Collaboration with teachers is important to ensure the student's communication goals are integrated into the classroom.



School Health Services

Constellation Schools promotes health and wellness through a coordinated school health program. Our program focuses on collaboration between administrators, staff, families and the community to ensure that our students learn in a healthy school environment and obtain a state of health and wellness that will allow them to learn and achieve their maximum potential. School health services, one component of this coordinated school health program, is provided by professional school nurses. School nurses are committed to improving health outcomes, academic achievement,

And life-long achievement for all students at Constellation Schools. To that end, the school nurses of Constellation Schools follow the Standards of School Nursing Practice (National Association of School Nurses) and the state and federal laws that govern health services in schools.

Occupational Therapy Services

School-based occupational therapy is available for students who are eligible for special education services. The profession of occupational therapy is concerned with a person's ability to participate in meaningful and purposeful daily life activities or "occupations." In the school setting, the role of the occupational therapist is to help children perform important learning and school-related activities in order to fulfill their role as students. Occupational therapy services support a child's participation in occupations of daily living (dressing, eating, etc.), academic areas, play, leisure, and social interactions. As part of the educational team within a school setting, occupational therapists work closely with the student, parents, and educators to identify the skills of the student, the demands of the environment, and appropriate solutions for interventions based on each child's unique needs.



Technology

Using technology is an important part of life at Constellation Schools. We provide many technology tools to our students, to create a superior learning environment where they can explore new ways of working, delve into the practically unlimited encyclopedia of available knowledge, and understand the ways information is shared and problems are solved. Constellation recognizes the importance of learning in a safe environment, so we train our teachers to guide student learning, and back them up with a powerful set of filters and firewalls that keep our computer network focused on academic success.



We invest heavily into classroom technology, and are better equipped than most public schools. Nearly every classroom is outfitted with a large interactive board, where the teacher and students can view and manipulate information on a giant computer screen. Each interactive board can be used to share an internet web quest with the entire class, or allow individual students to physically interact with digital objects on screen, moving, changing, writing, and drawing to get the point of the lesson. They make a fantastic big screen for videos from Discovery Education too! This is a subscription to a wealth of videos and lesson materials from The Discovery Channel. We subscribe because we know children today are "digital natives" who respond better and engage more when multimedia is used for teaching.



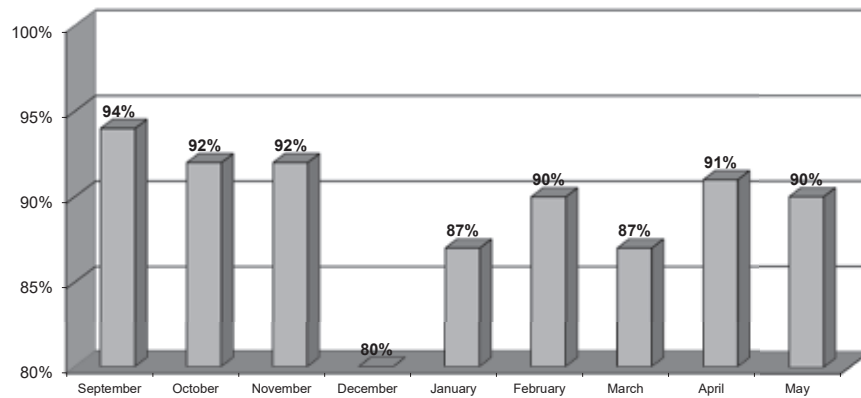
Our teachers receive significant technology training, from after school workshops to one-on-one sessions with technology integration coaches. Constellation provides training in Google Apps for Education and other web-based tools to support our 1:1 laptop initiative. Constellation students in grades 2-12 participate in our 1:1 laptop program. They receive a laptop to use in school, and after extensive lessons on digital citizenship, online safety and laptop care, they earn the privilege to take their laptops home in the provided laptop bag. To prepare our kindergarteners and 1st graders, our students have access to either desktops or laptop to begin typing and computer basics. Our teachers integrate technology in many innovative and creative ways at all grade levels.

From our Mission Statement to our individual students, we strive to ensure the success of every child in our advancing technological society. As technology is becoming more and more a tool for 21st Century Learning. Constellation Schools is committed to providing every student a technology rich learning environment.



Student Enrollment, Attendance & Demographics

2021-2022 Student Monthly Attendance Percentage



About Our Students

Students at Madison Community Elementary are enrolled on a first come, first served basis during the first two weeks of December. Those students who are currently enrolled are ensured a place for the following school year if they enroll during these two weeks. If more students apply than there are spots, a lottery is held and a waiting list is formed.

Student per Class/Teacher Ratio for 2021-2022

25 Students : 1 Teacher maximum

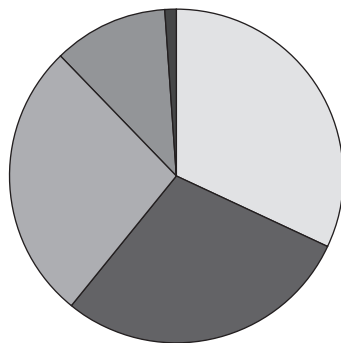
257 Students Enrolled

100% Eligible for Low Income

Demographics

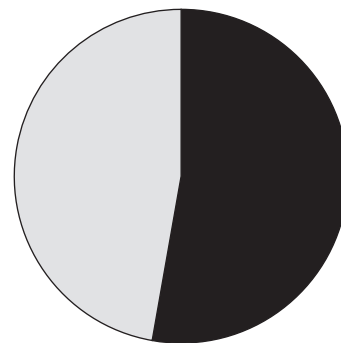
- 1% Asian
- 27% African American
- 32% Caucasian
- 29% Hispanic
- 11% Multiracial
- 0% Other

Student Demographics



- Asian 1%
- African American 27%
- Hispanic 29%
- Multiracial 11%
- Caucasian 32%
- Other 0%

Student Gender



- Male 53%
- Female 47%

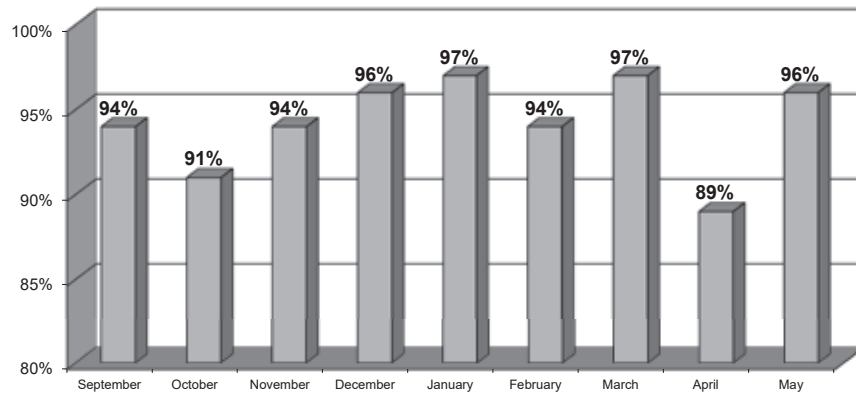
Home School Notification

The school is a public school and students enrolled in and attending the school are required to take achievement tests and other examinations prescribed by law. In addition, there may be other requirements for students at the school that are prescribed by law. Students who have been excused from the compulsory attendance law for the purpose of home education as defined by the Administrative code shall no longer be excused for that purpose upon their enrollment in a community school.

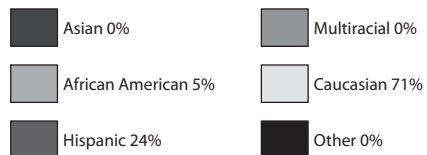
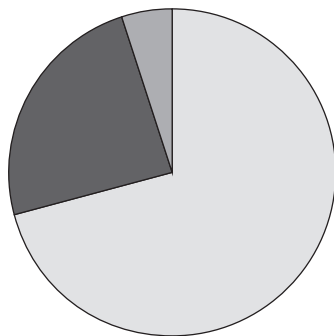


Madison Community Elementary Staff & Board

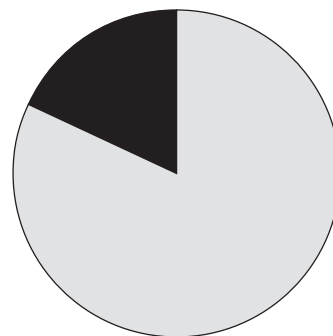
2021-2022 Staff Monthly Attendance Percentage



Staff Demographics



Staff Gender



Madison Community Elementary Staff

Principal
Kevin Sheridan

Assistant Principal
Tonya Antill

Admin. Assistants
Maria Kopchu
Linda Cox

Kindergarten
Nicole Dunn (1/2 yr.)
Elisa Avery (1/2 yr.)

1st Grade
Ashley Smith

2nd Grade
Ashley Lieu

3rd Grade
Angelique Tillis

4th Grade
Judy Godfray

5th Grade
Devon Klein

6th Grade
Kaye Prodan

7th Grade
Jennie Bremer

8th Grade
Stacey Ward-Estvander

Music
Kayla Thiemann

Title 1
Christina Kalessis
Steven Gaspar
Janet Simonovich

Aide
Norine Sanniti

Special Education
Lareesa Rice
Katerra Waldron

Counselor
Kinyatta Taylor

Instructional Coach
Erin Boron

Technology Coach
Jessica Duffield

Cleaner
Beverly Fluker

Food Service
Shelia Reyes

Madison Community Elementary Board

President
Charles Ledger

Members: Bogusia Chmielewski • Donna Stelter • Thomas Bonner
Rodney Spencer



NWEA Assessments

The NWEA assessments are: Measures of Academic Progress® (MAP®) – These computerized tests are adaptive and offered in Reading, Language Usage, and Mathematics. When taking a MAP® test, the difficulty of each question is based on how well a student answers all the previous questions.

~Percent Met Projection indicates the percent of students that met their individual student growth measure.

Language Arts: Reading

Grade (Spring 2022)	Total Number of Growth Events‡	Comparison Periods						Growth Evaluated Against								
		Fall 2021			Spring 2022			Growth		Grade-Level Norms			Student Norms			
		Mean RIT Score	Standard Deviation	Achievement Percentile	Mean RIT Score	Standard Deviation	Achievement Percentile	Observed Growth	Observed Growth SE	Projected School Growth	School Conditional Growth Index	School Conditional Growth Percentile	Number of Students With Growth Projections	Number of Students Who Met Their Growth Projection	Percentage of Students Who Met Growth Projection	Student Median Conditional Growth Percentile
K	22	135.1	6.0	53	148.7	10.7	13	14	1.5	19.9	-2.17	1	22	4	18	16
1	22	143.3	7.3	3	154.6	9.4	1	11	1.1	17.9	-2.14	2	22	1	5	17
2	21	159.2	8.4	4	175.1	8.9	6	16	1.8	15.9	0.01	50	21	9	43	45
3	20	171.8	14.2	3	183.4	16.6	2	12	2.0	13.6	-0.78	22	20	7	35	29
4	21	179.2	15.4	1	184.7	18.6	1	6	2.1	11.2	-2.27	1	21	4	19	29
5	30	190.5	13.3	4	189.3	16.2	1	-1	2.1	8.8	-4.21	1	30	2	7	13
6	31	191.7	12.2	1	194.3	14.2	1	3	1.6	7.7	-2.43	1	31	10	32	16
7	18	205.8	11.5	15	206.3	13.6	4	1	1.5	5.5	-2.37	1	18	4	22	29
8	21	203.1	16.7	4	205.1	17.9	2	2	1.5	5.4	-1.40	8	21	6	29	29

Math: Math K-12

Grade (Spring 2022)	Total Number of Growth Events‡	Comparison Periods						Growth Evaluated Against								
		Fall 2021			Spring 2022			Growth		Grade-Level Norms			Student Norms			
		Mean RIT Score	Standard Deviation	Achievement Percentile	Mean RIT Score	Standard Deviation	Achievement Percentile	Observed Growth	Observed Growth SE	Projected School Growth	School Conditional Growth Index	School Conditional Growth Percentile	Number of Students With Growth Projections	Number of Students Who Met Their Growth Projection	Percentage of Students Who Met Growth Projection	Student Median Conditional Growth Percentile
K	21	133.7	9.1	25	150.9	11.0	6	17	2.1	22.1	-1.84	3	21	7	33	35
1	22	145.3	8.3	2	162.9	9.5	1	18	1.3	20.6	-0.98	16	22	5	23	38
2	22	165.1	6.3	8	182.2	10.2	9	17	1.9	17.6	-0.17	43	22	10	45	39
3	20	170.9	13.0	1	186.5	13.4	1	16	2.3	14.7	0.36	64	20	10	50	50
4	21	180.0	15.6	1	185.7	17.3	1	6	1.5	12.1	-2.65	1	21	2	10	16
5	30	191.8	9.3	1	196.4	9.4	1	5	1.1	10.0	-1.90	3	30	2	7	15
6	31	195.8	9.7	1	198.9	9.5	1	3	1.0	8.8	-2.13	2	31	5	16	17
7	18	204.7	8.3	4	204.0	6.3	1	-1	1.7	7.3	-3.18	1	18	1	6	15
8	21	205.2	18.5	2	210.3	17.2	2	5	1.4	6.3	-0.42	34	21	5	24	34



State Report Card

STATE INDICATORS		PERCENTAGE OF STUDENTS AT AND ABOVE THE PROFICIENT LEVEL
		Constellation Schools: Madison Community Elementary
3rd Grade Achievement		
English Language Arts		16.7
Mathematics		16.7
4th Grade Achievement		
English Language Arts		10.5
Mathematics		10.5
5th Grade Achievement		
English Language Arts		16.0
Mathematics		0.0
Science		8.0
6th Grade Achievement		
English Language Arts		9.7
Mathematics		0.0
7th Grade Achievement		
English Language Arts		26.3
Mathematics		0.0
8th Grade Achievement		
English Language Arts		20.0
Mathematics		4.5
Science		18.2

Performance Index 43.5 The Performance Index measures the test results of every student, not just those who score proficient or higher. Schools and districts receive points on the index for every student who takes a test. The higher the performance level on the state tests, the more points awarded toward the index score. The index score is divided by the maximum possible score. Each year the maximum possible score is determined by the average of the highest 2% performance index scores in the state.

The Educational Service Center of Lake Erie West (ESCLEW) served as a sponsor for Constellation Schools: Madison Community Elementary during the 2021- 2022 school year. ESCLEW monitored the school's academic and fiscal performance, as well as organization and operation of the school, and determined that the school was overall compliant with all laws and rules.

As an Ohio community school sponsor, The ESC of Lake Erie West has a duty to monitor and provide oversight and technical assistance to all sponsored schools which includes an assessment of each sponsored school's academic performance on an annual basis. Due to a lack of academic data, ESCLEW was unable to complete its assessment of the academic performance of its sponsored schools for the 2020-2021 school year. Due to changes in the data and reporting on the Ohio School Report Card, ESCLEW was unable to complete its assessment of academic performance of its sponsored schools for the 2021-2022 school year.

Constellation Schools: Madison Community Elementary worked towards meeting Performance Accountability Framework goals (Contract Attachment 11.6) during the 2021-2022 school year. The school met the following 11.6 goals: Chronic Absenteeism, Specific Subgroups, Mission Specific, Parent Satisfaction, Organization & Operational Standard, and Financial Performance.



Constellation Schools:
Madison Community Elementary

"The Right Choice for Parents and a Real Chance for Children!"

AUGUST						
S	M	T	W	T	F	S
	1	2	3	4	5	6
7	8	9	10	11	12	13
14	15	16	17	18	19	20
21	22	23	24	25	26	27
28	29	30	31			

OCTOBER						
S	M	T	W	T	F	S
						1
2	3	4	5	6	7	8
9	10	11	12	13	14	15
16	17	18	19	20	21	22
23/30	24/31	25	26	27	28	29

September 2022

Sunday Monday Tuesday Wednesday Thursday Friday Saturday

				1 In-Service, Collaboration Prof. Development	2 Schools Closed	3
4	5 Labor Day (Schools Closed)	6 First Day of School	7	8	9	10

11	12	13	14	15	16	17
18	19	20	21	22	23	24
25	26	27	28	29	30	

2022 - **September**

Character Trait of the Month:

Respect



9	10	11	12	13	14	15
					In-Service, Collaboration Prof. Development (No School for Students)	
16	17	18	19	20	21	22
23	24	25	26	27	28	29
30	31					

2022- **October**

Character Trait of the Month:

Responsibility





Constellation Schools:
Madison Community Elementary

"The Right Choice for Parents and a Real Chance for Children!"

OCTOBER						
S	M	T	W	T	F	S
						1
2	3	4	5	6	7	8
9	10	11	12	13	14	15
16	17	18	19	20	21	22
23 ²³ / ₃₀	24 ²⁴ / ₃₁	25	26	27	28	29

DECEMBER						
S	M	T	W	T	F	S
				1	2	3
4	5	6	7	8	9	10
11	12	13	14	15	16	17
18	19	20	21	22	23	24
25	26	27	28	29	30	31

November 2022

Sunday Monday Tuesday Wednesday Thursday Friday Saturday

		1 First Quarter Ends	2	3	4	5
6	7 Building Work Day (No School for Students)	8 In-Service, Collaboration Prof. Development (No School for Students)	9	10	11	12

13	14	15	16	17	18	19
			Evening Parent/Teacher Conferences	Evening Parent/Teacher Conferences	Schools Closed	
20	21	22	23	24	25	26
	In-Service, Collaboration Prof. Development (No School for Students)	In-Service, Collaboration Prof. Development (No School for Students)	Thanksgiving Break (No School for Students)	Thanksgiving Break (No School for Students)	Thanksgiving Break (No School for Students)	
27	28	29	30			

2022 - **November**

Character Trait of the Month:

Citizenship





Constellation Schools:
Madison Community Elementary

"The Right Choice for Parents and a Real Chance for Children!"

NOVEMBER						
S	M	T	W	T	F	S
		1	2	3	4	5
6	7	8	9	10	11	12
13	14	15	16	17	18	19
20	21	22	23	24	25	26
27	28	29	30			

JANUARY						
S	M	T	W	T	F	S
1	2	3	4	5	6	7
8	9	10	11	12	13	14
15	16	17	18	19	20	21
22	23	24	25	26	27	28
29	30	31				

December 2022

Sunday Monday Tuesday Wednesday Thursday Friday Saturday

				1	2	3
4	5	6	7	8	9	10

11	12	13	14	15	16	17
18	19	20	21	22	23	24
			Winter Break (No School for Students)	Winter Break (No School for Students)	Winter Break (No School for Students)	
25	26	27	28	29	30	31
	Winter Break (No School for Students)	Winter Break (No School for Students)	Winter Break (No School for Students)	Winter Break (No School for Students)	Winter Break (No School for Students)	

2022 - **December**

Character Trait of the Month:

Compassion





Constellation Schools:
Madison Community Elementary

"The Right Choice for Parents and a Real Chance for Children!"

DECEMBER						
S	M	T	W	T	F	S
				1	2	3
4	5	6	7	8	9	10
11	12	13	14	15	16	17
18	19	20	21	22	23	24
25	26	27	28	29	30	31

FEBRUARY						
S	M	T	W	T	F	S
			1	2	3	4
5	6	7	8	9	10	11
12	13	14	15	16	17	18
19	20	21	22	23	24	25
26	27	28				

January 2023

Sunday Monday Tuesday Wednesday Thursday Friday Saturday

1	2 New Year's Holiday (Schools Closed)	3 In-Service, Collaboration Prof. Development (No School for Students)	4	5	6	7
8	9	10	11	12	13	14

15	16 Martin Luther King Day (Schools Closed)	17	18	19	20 2nd Quarter Ends	21
22	23 Building Work Day (No School for Students)	24	25	26	27	28
29	30	31				

2023 - **January**

Character Trait of the Month:

Fairness & Cooperation





Constellation Schools:
Madison Community Elementary

"The Right Choice for Parents and a Real Chance for Children!"

JANUARY						
S	M	T	W	T	F	S
1	2	3	4	5	6	7
8	9	10	11	12	13	14
15	16	17	18	19	20	21
22	23	24	25	26	27	28
29	30	31				

MARCH						
S	M	T	W	T	F	S
			1	2	3	4
5	6	7	8	9	10	11
12	13	14	15	16	17	18
19	20	21	22	23	24	25
26	27	28	29	30	31	

February 2023

Sunday Monday Tuesday Wednesday Thursday Friday Saturday

			1	2	3	4
5	6	7	8	9	10	11
			Evening Parent/Teacher Conferences	Evening Parent/Teacher Conferences	Schools Closed	

12	13	14	15	16	17	18
19	20 Presidents' Day (Schools Closed)	21 In-Service, Collaboration Prof. Development (No School for Students)	22	23	24	25
26	27	28				

2023 - **February**

Character Trait of the Month:

Courage



12	13	14	15	16	17	18
					Schools Closed	
19	20	21	22	23	24	25
				3rd Quarter Ends	Building Work Day (No School for Students)	
26	27	28	29	30	31	
	In-Service, Collaboration Prof. Development (No School for Students)					

2023 - **March**

Character Trait of the Month:

Honesty



9	10 (Schools Closed)	11	12	13	14	15
16	17	18	19	20	21	22
23	24	25	26	27	28	29
30					In-Service, Collaboration Prof. Development (No School for Students)	

2023 - **April**

Character Trait of the Month:

Perseverance





Constellation Schools:
Madison Community Elementary

"The Right Choice for Parents and a Real Chance for Children!"

APRIL						
S	M	T	W	T	F	S
						1
2	3	4	5	6	7	8
9	10	11	12	13	14	15
16	17	18	19	20	21	22
23 ³⁰	24	25	26	27	28	29

JUNE						
S	M	T	W	T	F	S
				1	2	3
4	5	6	7	8	9	10
11	12	13	14	15	16	17
18	19	20	21	22	23	24
25	26	27	28	29	30	

May 2023

Sunday Monday Tuesday Wednesday Thursday Friday Saturday

	1	2	3	4	5	6
7	8	9	10	11	12	13

14	15	16	17	18	19	20
					In-Service, Collaboration Prof. Development (No School for Students)	
21	22	23	24	25	26	27
					(Schools Closed)	
28	29	30	31			
	Memorial Day (School Closed)					

2023 - **May**

Character Trait of the Month:

Sportsmanship





Constellation Schools:
Madison Community Elementary

"The Right Choice for Parents and a Real Chance for Children!"

MAY						
S	M	T	W	T	F	S
	1	2	3	4	5	6
7	8	9	10	11	12	13
14	15	16	17	18	19	20
21	22	23	24	25	26	27
28	29	30	31			

JULY						
S	M	T	W	T	F	S
						1
2	3	4	5	6	7	8
9	10	11	12	13	14	15
16	17	18	19	20	21	22
23 ₃₀	24 ₃₁	25	26	27	28	29

June 2023

Sunday Monday Tuesday Wednesday Thursday Friday Saturday

				1	2	3
					Last Day of School for Students 4th Quarter Ends	
4	5	6	7	8	9	10
	Building Work Day	Building Work Day				

11	12	13	14	15	16	17
18	19	20	21	22	23	24
25	26	27	28	29	30	

2023 - **June**

Character Trait of the Month:

Loyalty





Constellation Schools:
Madison Community Elementary

"The Right Choice for Parents and a Real Chance for Children!"

JUNE						
S	M	T	W	T	F	S
				1	2	3
4	5	6	7	8	9	10
11	12	13	14	15	16	17
18	19	20	21	22	23	24
25	26	27	28	29	30	

AUGUST						
S	M	T	W	T	F	S
		1	2	3	4	5
6	7	8	9	10	11	12
13	14	15	16	17	18	19
20	21	22	23	24	25	26
27	28	29	30	31		

July 2023

Sunday Monday Tuesday Wednesday Thursday Friday Saturday

						1
2	3	4	5	6	7	8
		Independence Day				

9	10	11	12	13	14	15
16	17	18	19	20	21	22
23	24	25	26	27	28	29
30	31					

2023 - **July**

Character Trait of the Month:

Respect





Constellation Schools:
Madison Community Elementary

"The Right Choice for Parents and a Real Chance for Children!"

JULY						
S	M	T	W	T	F	S
						1
2	3	4	5	6	7	8
9	10	11	12	13	14	15
16	17	18	19	20	21	22
23 ²³ / ₃₀	24 ²⁴ / ₃₁	25	26	27	28	29

SEPTEMBER						
S	M	T	W	T	F	S
					1	2
3	4	5	6	7	8	9
10	11	12	13	14	15	16
17	18	19	20	21	22	23
24	25	26	27	28	29	30

August 2023

Sunday

Monday

Tuesday

Wednesday

Thursday

Friday

Saturday

		1	2	3	4	5
6	7	8	9	10	11	12

13	14	15	16	17	18	19
20	21	22	23	24	25	26
27	28	29	30	31		

2023 - **August**

Character Trait of the Month:

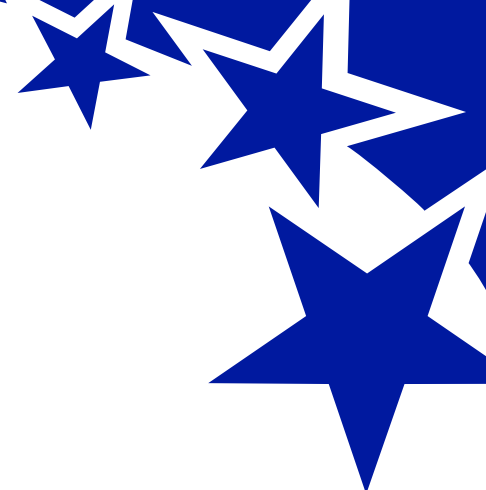
Respect





Constellation Schools Madison Community Elementary

Financial Report for Fiscal Year 2022



Constellation Schools: Madison Community Elementary Cash Basis Statement of Revenues and Expenditures Year Ending June 30, 2022	
REVENUES	
State Sources	\$2,290,004
Federal Sources	\$945,770
Local Sources	\$41,575
TOTAL REVENUES	\$3,277,349
EXPENSES	
Salaries & Wages	\$1,156,928
Employee Benefits	\$340,252
Purchased Services	\$785,082
Supplies & Materials	\$168,160
Capital Outlay	\$63,099
Other Expenses	\$239,868
TOTAL EXPENSES	\$2,753,389

At time of publication, 2022 fiscal year data was not available for the Ohio Auditor of State.
For updated information visit: www.auditor.state.oh.us

Keep up to date with important news,
reminders, events and photos!



Like Us on Facebook
facebook.com/ConstellationSchools

Follow Us on Instagram
instagram.com/constellationoh/



ACCEL