



# Mission, Vision, Value Statements & Slogans

## Mission

Constellation Schools provides every child an opportunity to obtain an excellent education to ensure life long success.



## Value

**We** believe all children deserve an exceptional education in a safe, caring, nurturing environment.

**We** will create a student focused community of learners where children excel, become responsible ethical citizens, and are prepared for success in career, college and life.

## Organization Slogan

*The Right Choice for Parents  
and a Real Chance for Children!*

## Vision

Constellation Schools will create an exceptional learning community characterized by high expectations and academic excellence.

**Our** students will be actively engaged life-long learners and become responsible involved citizens.

**Our** families will support their children and school as important, welcomed members of our learning community.

**Our** teachers will be inspiring, compassionate and committed to the success of every student.

**Our** leaders will provide superior service, resources, and support to ensure the success of every student.

**Our** Board of Directors will guide our school in creating a culture of excellence that ensures the success of every student.

## Character Education Slogan

*Remember  
We all have Choices.  
Choices have Consequences.  
Be Smart and Make the Right Choice!*

Constellation Schools admits students of any race, color, national or ethnic origin, and will not discriminate on the basis of race, religion, color, national origin, disability, age or gender in the administration of its educational policies, admissions policies, hiring, and employee retention policies, scholarships and loan programs, and athletic and other school administered programs.



# Constellation Schools & Its History

## **A Beginning**

Constellation Schools evolved from the desire of a small group of individuals to open a Montessori school in Cleveland's Old Brooklyn neighborhood. After a lot of hard work and many community meetings held over the course of two years, a change in Ohio law establishing community schools (or "charter schools") led to the creation of Old Brooklyn Montessori School (OBCE). OBCE opened in August of 1998 with three employees and 27 students.

## **Expanding and Creating a Universal Appeal**

The early successes of OBCE and the desire to improve public education, drove some of the original developers of OBCE to become more actively involved in Ohio's charter school movement. As a result, Richard Lukich, Gerald Preseren and Thomas Babb created Constellation Schools, a management organization, and worked together to develop proposals for additional community schools. Although they were pleased with the community support for OBCE and its Montessori curriculum, they recognized the challenges it presented in public education: difficulty finding quality Montessori trained and state certified teachers; the high cost of Montessori materials (about \$30,000 per classroom); and, the fact that a Montessori education does not appeal to everyone.

As a result, a more traditional curriculum utilizing a competency-based model was selected for OBCE and all new schools. To ensure the new schools stood out from existing public schools and the growing number of charter schools, a comprehensive character education (values) component was integrated throughout the curriculum, and small class sizes. The growth of the schools was tightly controlled, initially serving children in kindergarten through third grade and expanding to K-8 over a period of six years, to allow them to develop a sense of community. This slow growth also allows for a more selective process in hiring teachers, which ensures the development of a quality staff.

In 2000, Parma Community School became Constellation School's second school, and in 2001 three more schools opened: Westpark Community Elementary, Elyria Community Elementary and Lorain Community Elementary. Subsequent years brought additional growth with Puritas Community Elementary opening in 2003 and Madison Community Elementary and Stockyard Community Elementary in 2004.

In 2006, Old Brooklyn Community Middle, Westpark Community Middle, Lorain Community Middle, and Puritas Community Middle separated from their elementary school and became middle schools educating students in grades fifth through eighth. Outreach Academy for Children with Disabilities also opened in 2006 to serve students that are medically fragile. In 2007, Westside Community

School of the Arts, our first arts-based school, opened in Old Brooklyn, but a year later moved to the St. Philip & James school building in the Jefferson neighborhood in Cleveland. Since our middle school programs formed in 2006 the next school to emulate this program was Stockyard Community Middle educating students in grades seventh and eighth.

Constellation's growth is a steady progression that is determined by the community in which it is located. As a result, Elyria Community School expanded into a second building, the former Elyria City School - Eastgate building, to accommodate middle school students. Besides the expansion in Elyria, Collinwood Village Academy and Eastside Arts Academy opened for the 2011-2012 school year bringing Constellation's high quality education to Cleveland's east side for the first time. These two schools serve students in kindergarten through fifth grade and will follow Constellation's traditional growth model.

## **The Purpose of Constellation Schools**

Constellation Schools is an umbrella management organization, providing business, administrative, educational and financial support services to its managed schools. This structure allows these overhead expenses to be spread over all the schools, reducing the financial burden on individual schools. With Constellation performing most of the administrative functions, the building principals and teachers are freed up to do what they do best - educate children. Administrative centralization also eliminates duplicative services at each school. This type of efficiency is often used in business to increase efficiency. Within Constellation, it serves to improve performance and accountability. As the schools benefit from administrative centralization, more resources are available for students and teachers, resulting in more opportunities for students and better schools.

## **Success of the Organization**

In a little over fifteen years, Constellation Schools has grown from one school, 27 students, and 3 employees to seventeen schools educating more than 4,800 students and over 550 employees. A total of eleven buildings are owned by the schools which occupy them evidencing their acceptance within their communities and their financial strength.

## **Conclusion**

The founders of Constellation have established a community of schools that benefit from outstanding participation and support from staff, students and parents. Constellation has developed a reputation for its high standards and dedicated teachers, and for delivering a quality educational program in a safe and pleasant environment.



# Chairman's Message



The 2014/2015 school year was another exciting year for Constellation's schools in a number of areas including expanding facilities, increasing enrollment, and providing more extracurricular and outreach activities for students.

The groundbreaking for the middle school wing at Constellation Schools: Stockyard Community School was well attended and the new facility, when complete, will provide our middle school students with an enhanced learning environment and create a campus-like atmosphere with the elementary school. In addition to continued major renovations at our Constellation Schools: Parma Community High School building on West 54th Street in Parma, we completed the purchase of the St. Francis School building from the Catholic Diocese and will open our Intermediate School there during the 2015/2016 school year.

With enrollment at all of our schools continuing to grow, there has been a major push for our schools to partner with community resources. This not only maximizes resources available to our schools, but also enables our students to exercise many of the citizenship principles they are taught through the character education program. Our Elyria and Collinwood schools participated in programs with the Elyria City Public Library and the Little Free Library Organization, respectively, to ensure students had access to a variety of current and classic books. In addition, Elyria Middle School sponsored a "Dad's Literacy Night," where 150 fathers attended and engaged in literacy activities with their children. Similarly, Collinwood sponsored a "Father's Walk" where 50 fathers/brothers/grandfathers walked students to school and participated in literacy events.



Students at Constellation Schools: Westpark Elementary donated money to the Leukemia Foundation, and Madison students teamed up with the Elijah Jennings Nursing Home and visited with residents and provided cards and a musical program. The staff at Constellation Schools: Outreach continues to provide "Disability Awareness" programs for students of other Constellation schools that visit and participate in the "Holidays Around the World" program and the "Music and Art" show. The Stockyard schools participated in the Annual Community Clean Up Day and, cleaning up a three block area around the school and helping to collect nearly 10 tons of trash.

All of our schools continue to expand extracurricular activities. At Constellation Schools: Westpark Middle School students participated in several programs sponsored by NASA, including "Gain Traction on Mars," the "Rover Challenge," and the "Take Flight Challenge." The school also had student win the "Promising Young Talent Award" in the Power of the Pen competition, and had another student compete in the state-wide competition. Constellation Schools: Lorain Middle School initiated a student leadership program that not only offered students with a chance to expand their leadership skills but also resulted in expanded extracurricular opportunities.

Students at Constellation Schools: Westside Arts participated in a writing competition sponsored by one of our sponsors, Buckeye Community Hope Foundation, and won awards. They also created a character education-based video and won first place in the Constellation Spirit Video Competition. Students at Elyria took part in the Destination Imagination program and competed with thousands of other students throughout Northeast Ohio.

Our schools continue to provide a high quality education to our students and also continue to expand opportunities for students to participate in a variety of activities outside of academics. The Constellation basketball program continues to be a huge success again this year, with our Westpark Middle school winning the championship. In addition to expanding intramural sports, our schools also offered a variety of activities such as Student Council, and clubs, including: band, dance, fitness, spirit, art, choir, chess, Spanish, math, MineCraft, drama, cheerleading, photography, technology and literacy.



In addition to our focus on academics and individual student success, many of our schools are providing students with incredible opportunities to learn outside of the classrooms with field trips to Washington, D.C., as well as outdoor education classes.

Our dedicated, compassionate teachers and staff believe that every child deserves a high quality education, and that Constellation's community schools are:

The Right Choice for Parents and a Real Chance for Children.

~Richard A. Lukich, Chairman of Constellation Schools~



# Directors & Administrative Staff

**Rebecca Keeney**  
*Executive Director*

**Elizabeth Long**  
*Receptionist*

**Thomas Babb**  
*Chief Financial Officer*

**Jean Sandler**  
*Treasurer*

**Kathy Segatta**  
*Accounting Manager*

**Marjorie Wagner**  
*Budget Manager*

**Vicki Kerner**  
*Administrative Assistant-Finance*

**Susan Knurek**  
*Administrative Assistant-Finance p.t.*

**Marilyn Kehn**  
*Payroll p.t.*

**Rebecca Novak**  
*EMIS Manager*

**Kim Petonic**  
*Director of Human Resources*

**Amy Spears**  
*Administrative Assistant*

**Roy Zeman**  
*Coordinator of Educational Services*

**April Gunderman**  
*Manager of Special Education*

**Laura Horvath**  
*Special Education Coach*

**Rebecca Jordan**  
**Elizabeth Boham**  
**Heather Zeman**  
**Kevin Panek**  
**Jillian Lukich**  
*School Psychologists*

**Amanda Cell**  
**Angela Harwood**  
**Jillian McQuerry**  
**Marie Rowinski**  
**Jill Teresczuk**  
*Speech & Language Pathologists*

**Frances Horvath**  
**Karen Boose**  
*Occupational Therapists*

**Lee DiSante**  
**Kris Harvey**  
**Julia Howerton**  
**Amanda Mayle**  
**Malinda Miller**  
**Lisa Stern**  
**Hibah Ahmad**  
**Teresa Martin**  
*School Nurses*



**David Calco**  
*Technology Coordinator*  
**Lisa Geyer**  
**Lou Videc**  
**David Colon**  
*Technology Specialists*

**Brian Preseren**  
*Facilities Operations Manger*  
**John Allen**  
**Garrick Lukich**  
**Robert Koster**  
*Maintenance*

**Lisa Vinarcik**  
*Manager of Marketing & Public Relations*

**Sharon Morgan**  
*Coordinator of Staff & Professional Development*

**Marybeth Oko**  
*Administrative Assistant*

**Sheila Woidke**  
*Manager of Professional Development*

**Kelly Koehler**  
*Supervisor of Teacher Mentoring*

**Kimberly Jackson**  
**Erin Towne**  
*Professional Development Coach*



# List of Schools

## **Constellation Schools Grades K-4** **Old Brooklyn Community Elementary**

(1998)  
Cherie Kaiser, Principal  
4430 State Road, Cleveland, Ohio 44109  
216.661.7888 • 216.661.5975 fax

## **Westpark Community Elementary** (2001)

Sheila Delzani, Principal  
16210 Lorain, Cleveland, Ohio 44111  
216.688.0272 • 216.688.0273 fax

## **Lorain Community Elementary** (2001)

Melisa Shady, Principal  
1110 West 4th Street, Lorain, Ohio 44052  
440.204.2130 • 440.204.2134 fax

## **Puritas Community Elementary** (2003)

Meg Colwell, Principal  
15204 Puritas Avenue, Cleveland, Ohio  
44135  
216.688.0680 • 216.688.0609 fax

## **Constellation Schools Grades K-6** **Stockyard Community Elementary**

(2004)  
Amber Steele, Principal  
3200 West 65th Street, Cleveland, Ohio  
44102  
216.651.5143 • 216.651.9515 fax

## **Constellation Schools Grades K-5** **Collinwood Village Academy**

(2011)  
Bethany Scott, Principal  
716 East 156th Street, Cleveland, Ohio 44110  
216.451.4022 • 216.451.4040 fax

## **Eastside Arts Academy** (2011)

Katherine Rybak, Principal  
6700 Lansing Avenue, Cleveland, Ohio 44105  
216.441.9830 • 216.441.9834 fax

## **Constellation Schools Grades K-8** **Elyria Community**

(2001)  
Eric Fortuna, Principal  
Elementary 300 North Abbe Road, Elyria, Ohio  
44035  
440.366.5225 • 440.366.6280 fax

Thomas Flood, Building Administrator  
Middle 336 South Logan Street, Elyria, Ohio  
44035  
440.365.0390 • 440.365.0397 fax

## **Westside Community School of the Arts** (2007)

Deborah Rotolo, Principal  
3727 Bosworth, Cleveland, Ohio 44111  
216.688.1900 • 216.688.1902 fax

## **Madison Community Elementary** (2004)

Melissa Rice, Principal  
2015 West 95th Street, Cleveland, Ohio 44102  
216.651.5212 • 216.651.9040 fax

## **Constellation Schools Grades 5-8** **Old Brooklyn Community Middle**

(2006)  
Karil Stohlman, Principal  
4430 State Road, Cleveland, Ohio 44109  
216.351.0280 • 216.661.5975 fax

## **Westpark Community Middle** (2006)

Mindy Kidd, Principal  
16210 Lorain, Cleveland, Ohio 44111  
216.251.7200 • 216.251.0355 fax

## **Puritas Community Middle** (2006)

Meg Colwell, Principal  
15204 Puritas Avenue, Cleveland, Ohio  
44135  
216.251.1596 • 216.251.3540 fax

## **Lorain Community Middle** (2006)

Melisa Shady, Principal  
1110 West 4th Street, Lorain, Ohio 44052  
440.242.2023 • 440.204.2134 fax

## **Constellation Schools Grades 7-8** **Stockyard Community Middle**

(2010)  
Amber Steele, Principal  
3224 West 65th Street, Cleveland, Ohio  
44102  
216.961.5052 • 216.961.9227 fax

## **Constellation Schools Grades K-12** **Parma Community**

(2000)  
Linda Geyer, Principal  
Brian Belmont, Building Administrator  
Parma Community Elementary– Day Drive  
7667 Day Drive, Parma, Ohio 44129  
440.888.5490 • 440.888.5890 fax  
Gregory Cek, Building Administrator  
Parma Community Pearl Road Elementary  
6125 Pearl Road, Parma Heights, Ohio 44130  
440.345.5960 • 440.882.6169 fax

Middle and High  
5983 West 54th Street, Parma, Ohio 44129  
440.845.2587 • 440.845.2834 fax

**Outreach Academy**  
(2006)  
Mary Wideman, Principal  
9772 Diagonal Road, Mantua, Ohio 44255  
330.274.2272 • 330.732.2575 fax





# Parent Notification System

Constellation Schools knows how important it is to keep you up-to-date with school news and school happenings. We will be communicating to you through Ohio Alerts, a mass notification system. Please follow the directions below to sign up for this service. If you do not sign up, you will not be notified via email or text messaging. Please note if your email or cell phone number changes, you must update it through your Ohio Alert account.

All of Constellation Schools have implemented the Ohio Alerts notification system for parents.  
To subscribe to your school's alerts, please enter the following link: <http://www.ohioalerts.org>

Click on Cuyahoga County (Constellation Schools Administrative office is located in Cuyahoga, regardless if your school is located in Lorain or Mansfield)  
Click on Constellation Schools  
Click on Subscribe to Alerts  
Enter your full name  
Click on either text or email- you will have to sign up twice if you would like both

## **To subscribe for text alerts:**

- click on text
- enter your cell phone number with the area code
- click on your phone provider
- click on the school(s) you would like to receive text alerts from
- enter in the security code
- click the COPPA compliant
- click subscribe
- you will receive a text message from [Alerts@constellationschools.com](mailto:Alerts@constellationschools.com) stating you have subscribed to receive text alerts

## **To subscribe to email alerts:**

- click on email
- enter your email address  
*YOUR EMAIL MUST BE A HOTMAIL, GMAIL, SBCGLOBAL, MSN, ROADRUNNER, YAHOO AOL, OR ANY OTHER EMAIL, IT CAN NOT BE YOUR PHONE NUMBER @MMS.ATT.NET*  
**DO NOT ENTER YOUR PHONE NUMBER AS THE EMAIL ADDRESS BECAUSE YOU WILL NOT RECEIVE THE ALERTS.**
- click on the school(s) you would like to receive email alerts from
- enter in the security code
- click the COPPA compliant
- click subscribe
- you will receive an email message from [Alerts@constellationschools.com](mailto:Alerts@constellationschools.com) stating you have subscribed to receive email alerts

After you are done subscribing, the link below is to access your personal Ohio Alerts account.  
Please log in at: <http://www.ohioalerts.org/Login.aspx>

If you have any questions or need further assistance, please email or call Lisa Vinarcik, Manager of Marketing and PR at [Vinarcik.lisa@constellationschools.com](mailto:Vinarcik.lisa@constellationschools.com) or 216-712-7600 extension 50107.



# Educational Plans/Programs

Our curriculum is aligned with the Ohio Academic Content Standards and is designed to guide students toward their grade level goals. Content areas include: reading/language arts, math, science, social studies, art, music, physical education/health and computers. During the 2014-2015 academic year, all Constellation Schools utilized the Ohio Academic Content Standards to prepare our students for the Ohio Achievement Assessments in Grades 3-8 and the Ohio Graduation Test in Grade 10. With the state's adoption of the Common Core Standards in English language arts and math and newly revised science and social studies standards, teachers prepared students for the new PARCC and AIR assessments for grades 3-12. Teachers made the necessary adjustments to our current curriculum in an effort to stay aligned with the state standards.

Title 1 services (small grouping with a reading/math teacher) and Special Education Services are implemented to assist students who qualify for special services. Numerous online programs are utilized as part of our Response to Intervention program in an effort to move children through the intervention pyramid. Furthermore, classroom instruction is enhanced through the use of technology in our computer labs, integrating classroom projects with such programs as word processing, power point presentations and internet research. Most of our classrooms are utilizing Smart Board Education and all of our schools are utilizing the latest in technology innovations.



Teachers establish high academic measures for achievement and behavior in their classrooms. Through age appropriate teaching methods, all students will reach or exceed their maximum potential. The cornerstone of our academic program is our strong emphasis on Character Education. Character Education permeates throughout our curriculum. All of our classrooms and hallways have a variety of posters and bulletin boards that define acceptable character. Good behavior and appropriate manners from everyone is a constant expectation of our students and staff. Character Education enhances our educational plan while securing a safe and nurturing learning environment for all of our students.



Students were able to highlight their talents and skills with assorted programming throughout the year. The All Constellation Spelling Bee brought together the top spellers from each school in December. In January, the All Constellation Science Fair provides students with the opportunity to share various science projects. Thirty Three students continued their Science knowledge and participated in the CONSEF schools engineering and Science Fair, which included competition from 7 states. Many students from several of the Constellation Middle School participated in power of the Pen. This competition show cases the writing talents of our students. Finally, the All Constellation Band and Arts Festival in May provided our students studying instrumental music a chance to showcase their talents as well as the Art talent in several of our schools. Afterschool clubs are offered in a variety of our schools addressing such interests as: drama, basketball, comic books, reading and homework. All of these programs are organized and facilitated by staff who go above and beyond to provide our students with a well-rounded education rich with opportunities.



# Professional Development

Constellation Schools are committed to quality professional development. Our Local Professional Development Committee (LPDC) follows all state requirements to renew teaching/principal certificates and licensures. Our professional renewal process ensures a close connection between renewal activities of the educators and classroom practices. The continued development and improvement of relevant and applicable professional pedagogical skills and knowledge are essential to the education process. Through professional development we can ensure that all students reach their full potential to contribute to a democratic society including maximizing each student's abilities and encouraging self-reflection and a lifelong love of learning.

Several professional development opportunities before the start of the school year were provided such as:

- Classroom Management
- Ohio Teacher/Principal Evaluations (OTES/OPES)
- Differentiated Instruction
- Formative Instructional Practices (FIP)
- Progress Book
- Standards Based Report Card
- Special Education Procedures
- Technology in the Classroom
- Curriculum
- Technology
- Data Director



## **Professional Development Coaches**

The Professional Development Coach positions provide a framework of support, professional development, and standards based assessments and evaluations for all teachers. The coaches create an atmosphere for collaboration and teamwork in helping achieve the goals and objectives of each individual teacher.

Constellation Schools provided teachers with an opportunity to choose various professional development workshops to enhance their own professional growth. Such opportunities included:

- Grade Level / Subject Specific Content Standards
- Middle School Conferences
- Improving Reading and Math Instruction Workshops
- Smart Board Training
- Teacher Evaluation (OTES)
- Common Core Curriculum . Common Core Standards
- Formative Instructional Practices ( FIP)
- Data Director Training /Analyzing Data and Creating Assessments

## **Resident Educator Program**

A four-year Resident Educator program of support and mentoring for new teachers will provide educators just entering the profession with quality mentoring and guidance essential for a long and flourishing career. Successful completion of the residency program will be required to qualify for a five-year professional educator license.



A full year program was provided to all first-year teachers. This program offered monthly meetings, support, and information that enhanced the first-year teacher's experience. Teacher Development Coaches were added to schools to work with Resident Educators throughout the school year. The coaches were available to the Resident Educators to serve as mentors within the school day. The first full year experience with a mentor provided the support needed as well as provided for individual needs for every first and second year teacher. The program continues throughout the resident educators license.



# Special Services

Constellation Schools has a commitment to provide a free and appropriate public education for children with disabilities in accordance with state and federal laws, rules, and regulations. In that endeavor, the Educational Support Services Department works to assist all of our schools in the following specialized areas: Special Education, Psychological Services, Speech and Language Services, School Health Services, Occupational Therapy Services, and Physical Therapy Services. Additionally, the Educational Support Services Department assists each of our schools in creating and maintaining their Response to Intervention Process, Grade Level Intervention Teams, writing Section 504 Plans and Title I support.

## **Psychological Services**

Psychologists employed by Constellation Schools are Ohio Department of Education licensed and have specialized training in both psychology and education. They collaborate with parents and community agencies in order to coordinate services and interventions for students. They provide consultative services to educators and are members of the school-based intervention teams. School psychologists assist in assessment, eligibility, and program planning for students with disabilities as part of a range of special education services that Constellation Schools provides. Counseling may be delivered to special education students who demonstrate behavioral difficulties that impede their educational progress. Crisis intervention is also provided when necessary.

## **Speech & Language Services**

Good communication skills are important for speaking, listening, reading, writing, and learning at school. Some students have communication difficulties that can interfere with their ability to understand and participate in classroom instruction and impair their relationships with teachers and other children. Students who are formally identified as having communication problems that adversely affect their education are eligible to receive speech and/or language services from a speech & language pathologist. Speech & language services can be provided in a variety of ways, depending on the student's needs. Collaboration with teachers is important to ensure the student's communication goals are integrated into the classroom.

## **School Health Services**

Constellation Schools promotes health and wellness through a coordinated school health program. Our program focuses on collaboration between administrators, staff, families and the community to ensure that our students learn in a healthy school environment and obtain a state of health and wellness that will allow them to learn and achieve their maximum potential. School health services, one component of this coordinated school health program, is provided by professional school nurses. School nurses are committed to improving health outcomes, academic achievement, and life-long achievement for all students at Constellation Schools. To that end, the school nurses of Constellation Schools follow the Standards of School Nursing Practice (National Association of School Nurses) and the state and federal laws that govern health services in schools.



## **Occupational Therapy Services**

School-based occupational therapy is available for students who are eligible for special education services. The profession of occupational therapy is concerned with a person's ability to participate in meaningful and purposeful daily life activities or "occupations." In the school setting, the role of the occupational therapist is to help children perform important learning and school-related activities in order to fulfill their role as students. Occupational therapy services support a child's participation in occupations of daily living (dressing, eating, etc.), academic areas, play, leisure, and social interactions. As part of the educational team within a school setting, occupational therapists work closely with the student, parents, and educators to identify the skills of the student, the demands of the environment, and appropriate solutions for interventions based on each child's unique needs.



# Technology



Using technology is an important part of life at Constellation Schools. We provide many technology tools to our students, to create a superior learning environment where they can explore new ways of working, delve into the practically unlimited encyclopedia of available knowledge, and understand the ways information is shared and problems are solved. Constellation recognizes the importance of learning in a safe environment, so we train our teachers to guide student learning, and back them up with a powerful set of filters and firewalls that keep our computer network focused on academic success.

We invest heavily into classroom technology, and are better equipped than most public schools. Nearly every classroom is outfitted with a large interactive board, where the teacher and students can view and manipulate information on a giant computer screen. Each SMART Board can be used to share an internet web quest with the entire class,



or allow individual students to physically interact with digital objects on screen, moving, changing, writing, and drawing to get the point of the lesson. They make a fantastic big screen for videos from Discovery Streaming too! This is a subscription to a wealth of videos and lesson materials from The Discovery Channel. We subscribe because we know children today are "digital natives" who respond better and engage more when multimedia is used for teaching.

Constellation Schools are equipped with computer labs, either rooms or mobile laptop carts, where every child in class can participate in guided computer based instruction as a group. Some of our middle school classes are in a grant-funded 1-to-1 laptop program, where every student has their own laptop that can be used in any class as needed, and we are working to roll out 1-to-1 laptops for every student in 2nd through 12th grade.



Our teachers receive significant technology training, from after school workshops to big conferences. Constellation provides top quality training so our teachers are ready to use modern educational technology to its fullest advantage. Our teacher coaches are also tech savvy and assist other teachers with technology use in the classroom.

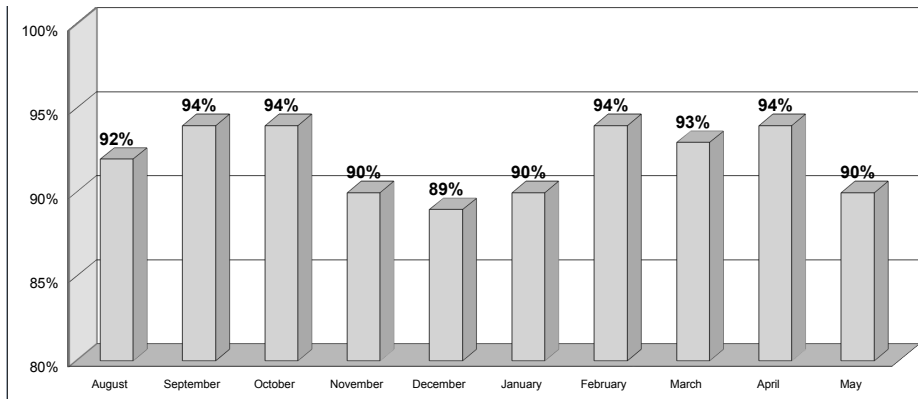
One thing we're sure about, technology isn't going away, it's becoming more complex all the time. From our Mission Statement to our individual students, we strive to ensure the success of every child in our advancing technological society.





# Student Enrollment, Attendance & Demographics

**2014-2015 Student Monthly Attendance Percentage**



## About Our Students

Students at Eastside Arts Academy are enrolled on a first come, first served basis during the first two weeks of December. Those students who are currently enrolled are ensured a place for the following school year if they enroll during these two weeks. If more students apply than there are spots, a lottery is held and a waiting list is formed.

### Student per Class/Teacher Ratio for the 2014-2015

24 Students : 1 Teacher maximum

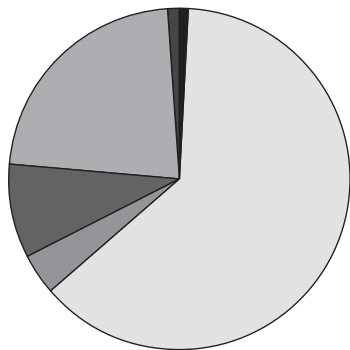
117 Students Enrolled

99% Eligible for Low Income

### Demographics

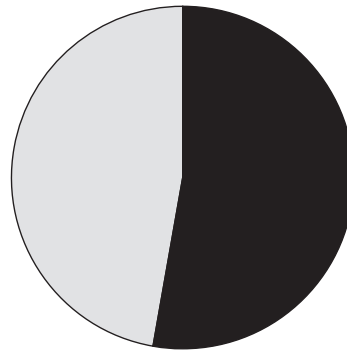
- 0 % Asian
- 64% African American
- 23% Caucasian
- 4 % Hispanic
- 9% Multiracial
- 0 % Other

## Student Demographics



- Asian 0%
- African American 64%
- Hispanic 4%
- Multiracial 9%
- Caucasian 23%
- Other 0%

## Student Gender



- Male 53%
- Female 47%

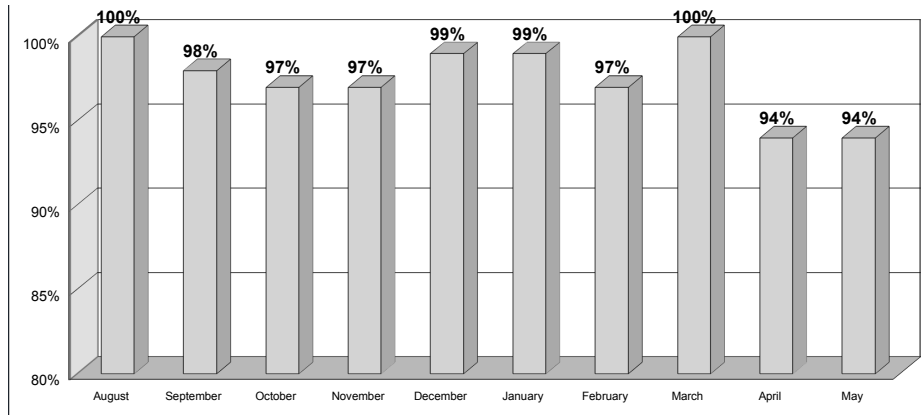
## Home School Notification

The school is a public school and students enrolled in and attending the school are required to take achievement tests and other examinations prescribed by law. In addition, there may be other requirements for students at the school that are prescribed by law. Students who have been excused from the compulsory attendance law for the purpose of home education as defined by the Administrative code shall no longer be excused for that purpose upon their enrollment in a community school.

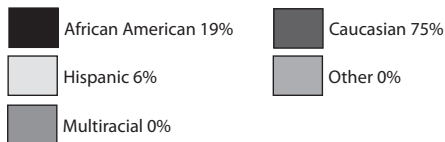
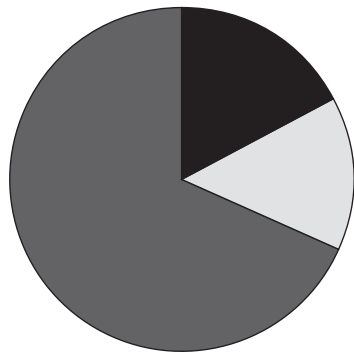


# Eastside Arts Academy Staff & Board

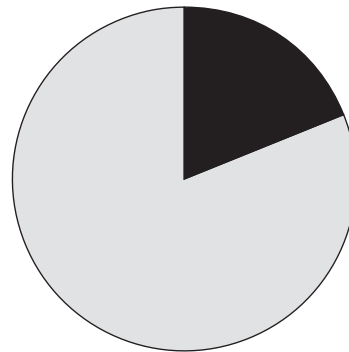
## 2014-2015 Staff Monthly Attendance Percentage



## Staff Demographics



## Staff Gender



## Eastside Arts Academy Staff

**Principal**  
Kate Rybak

**Administrative Assistant**  
Allison Blunk

**Kindergarten**  
Amanda Vitello

**1st Grade**  
Andrea Metz

**2nd Grade**  
Adam Peters

**3rd Grade**  
Kathy McCallister

**4th Grade**  
Lauren Merkle

**5th Grade**  
Katie Outrich

**Art**  
Jeremy Pytel

**Music**  
Jennifer Kowalski

**Special Education**  
Eileen Pompili

**Title I**  
Melissa Johnson  
Chrystal Abernathy

**Building Cleaner/Food Service**  
Lajacquez White

**Aide**  
Emily Fricker

## Eastside Arts Academy Board Members

**President**  
Deborah Callen

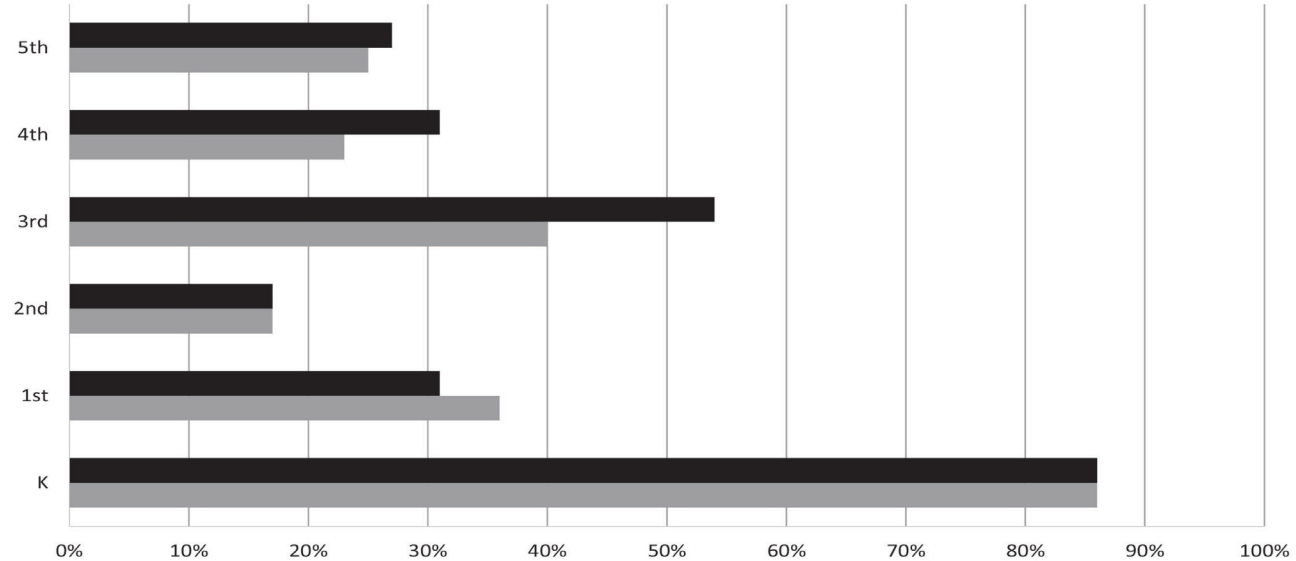
**Members:**  
Laura Trivison  
Rand Laycock  
Robert Anzalone  
James Tortelli



# Iowa Assessments

## Spring 2015 Iowa Assessments National Percentile Rank

The Iowa Assessments from Houghton Mifflin Harcourt – Riverside, the assessment division of HMMH, measures student achievement and growth across a continuum of next generation learning standards, including Common Core.



	K	1st	2nd	3rd	4th	5th
■ Mathematics	86%	31%	17%	54%	31%	27%
■ English Language Arts	86%	36%	17%	40%	23%	25%

The Ohio Department of Education will publish the 2015 School Report Card in January 2016.  
 Why the delay in publishing the 2015 Ohio School Report Card? Typically, the department issues the Ohio School Report Card in late August or early September for the previous school year. This is a one-time delay in communicating results due to the transition to new state tests in English language arts, mathematics, science and social studies. Ohio will resume its typical release schedule with the 2016 Ohio School Report Card for the 2015-2016 school year.  
 How does this impact my district or school? Recent changes in Ohio school law extend the time districts and schools have before they are accountable for all measures on the Ohio School Report Card.  
 There will not be an overall grade for a district or school until 2018.  
<http://education.ohio.gov/Topics/Data/News/State-Board-Sets-State-Percentages-for-2015-Ohio-S>

As the sponsor of the school, St. Aloysius is legally mandated to provide oversight, monitoring and technical assistance. St. Aloysius bases its assessments of school performance on each of the State required indicators. In addition, St. Aloysius is a regular participant in school board meetings which include review and discussion of the results of short cycle assessments of students' academic progress (as well as other financial and organizational issues). St. Aloysius also reviews the school's Ohio Improvement Process (OIP) focused plans and Implementation and Management/Monitoring (IMM) tools, which have significant impact on overall school performance. This school is substantially compliant with the rules and regulations governing community schools. Though the school is substantially compliant, the sponsor creates and/or monitors a number of reports relative to the schools performance in many areas besides overall compliance. All community school sponsors are required to submit a written report of the evaluation results of the school's academic, financial, and organizational performance as well as the school's legal compliance to the Ohio Department of Education and make the report available to parents of students enrolled in the community school by November 30th of each year [OAC 3301-102-05(A)(3)]. As such, an Annual Report regarding the performance of this school and other schools under the sponsorship of St. Aloysius will be posted on our website [www.charterschoolspec.com](http://www.charterschoolspec.com) no later than November 30, 2015. Parents are urged to review this report as well as other monitoring and evaluative reports available through the school or the sponsor for a full understanding of their school's performance.



# Constellation Schools Eastside Arts Academy Financial Report for Fiscal Year 2015

The Cash Basis Report of Revenues and Expenditures for the Year ended June 30, 2015 reflects the activities of Constellation Schools: Eastside Arts Academy during the year. The information provided below refers to this report and the accompanying graphs.

**Highlights for the Year:** ✓ 3rd annual audit issued for 2014 with an “unqualified opinion” (best opinion available)

## Revenues

The largest source of operating revenue (83%) comes from the State of Ohio School Foundation Program. This funding is earned at a base rate of \$5,800 for each student enrolled during the year. Additional funds are provided for the special needs of students, the poverty level of the community in which each student resides, and other adjustments.

State and Federal Grants (16%) supplement school operations for specific purposes. The school received grants for Title I Intervention, Professional Development, Special Education and Electronic Communications. Casino tax proceeds are also included in this category.

Other income (1%) includes materials fees collected from each student to provide consumable materials used during the year, food service collections and other miscellaneous items.

### Constellation Schools: Eastside Arts Academy Cash Basis Statement of Revenues and Expenditures for the Year ended June 30, 2015 (Unaudited)

<b>Beginning Cash - July 1, 2014</b>	<b>\$ 73,686</b>
<b>Revenues</b>	
State Foundation	\$ 982,924
State & Federal Grants	\$ 183,427
Other Income	\$ 13,874
<b>Total Revenue</b>	<b>\$ 1,180,135</b>
<b>Expenditures</b>	
Personnel	\$ 477,120
Retirement & Benefits	\$ 172,742
Purchased Services	\$ 380,303
Supplies & Materials	\$ 39,359
Capital Outlay	\$ 11,264
Other	\$ 23,455
<b>Total Expenditures</b>	<b>\$ 1,104,242</b>
<b>Ending Cash - June 30, 2015</b>	<b>\$ 149,578</b>

## Additional Information

A more detailed set of financial statements may be obtained by calling (216)712-7600, writing to the Treasurer, Constellation Schools 5730 Broadview Road, Parma, Ohio 44134 or by e-mail at the following address: [sandler.jean@constellation-schools.com](mailto:sandler.jean@constellation-schools.com).

During the fall of 2015 an audit of the school's financial records for the year ended June 30, 2015 will be completed. The audit report should be available during the winter at the above address and on the Auditor of State's website: [www.auditor.state.oh.us](http://www.auditor.state.oh.us).

## Expenditures

Personnel services, combined with retirement and benefits, accounted for 59% of the expenditures for the year. These expenditures include support staff, teachers, state retirement systems, employment taxes and health insurances.

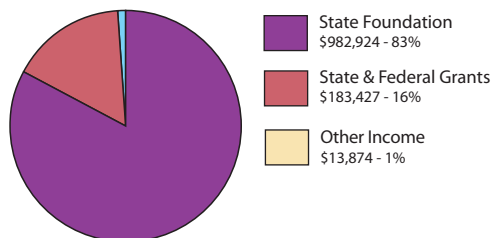
Purchased services (34%) include expenditures for student support services (speech, psychologist, health and physical therapy), contracted substitutes, field trips, professional development, management services, administrative support, sponsor services, test scoring, data reporting, facility operations, equipment leases, telephone, postage, travel, marketing, printing, food services and other services.

Supplies and materials (4%) include textbooks, instructional supplies, testing materials, office supplies, medical supplies, instructional software and maintenance supplies.

Capital Outlay (1%) includes purchases of equipment and furniture.

Other (2%) includes insurances (property, liability, fidelity bond, directors & officers), dues and subscriptions and other miscellaneous.

Constellation Schools: Eastside Arts Academy  
Cash Basis Revenues for the Year Ended June 30, 2015



Constellation Schools: Eastside Arts Academy  
Cash Basis Expenditures for the Year Ended June 30, 2015

