



Celebrating its 20th anniversary, Constellation Schools: Madison Community Elementary provides a well-rounded educational experience with small class sizes to allow for individualized instruction.

The award-winning K-8 school partners with parents and community organizations to support and extend learning beyond the classroom. The school sets high standards for both academics and behavior with character education and school citizenship programs. Students receive regular instruction in Art, Music, PE & Writing. Additionally, students benefit from numerous special activities, field trips, competitions, and extracurriculars including clubs and sports.

MISSION STATEMENT

To provide every child an opportunity to obtain an excellent education built on a foundation of character education for life long success.



GRADES SERVED

K - 8

STUDENTS SERVED

197

PRINCIPAL

Yolanda Rodriguez

REGIONAL VICE PRESIDENT

Sarah O'Bryan

SCHOOL YEAR OPENED

2004-05

MANAGED BY ACCEL

2021-22

AUTHORIZER

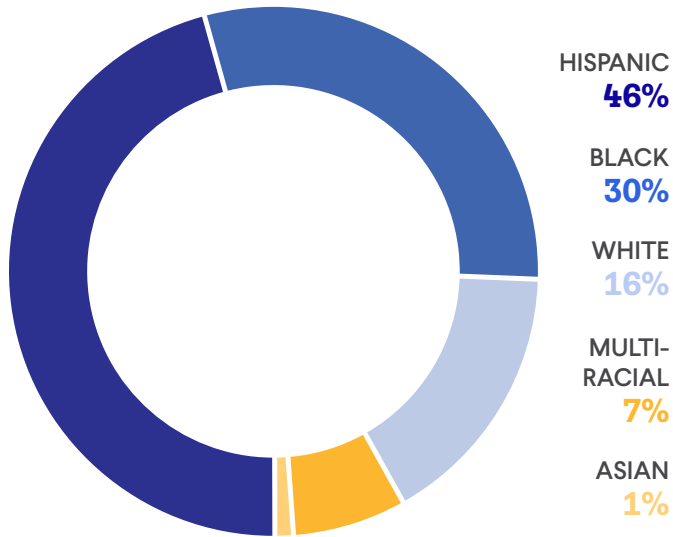
Educational Service

Center of Lake Erie West



2023-24
ANNUAL REPORT

STUDENT DEMOGRAPHICS



171

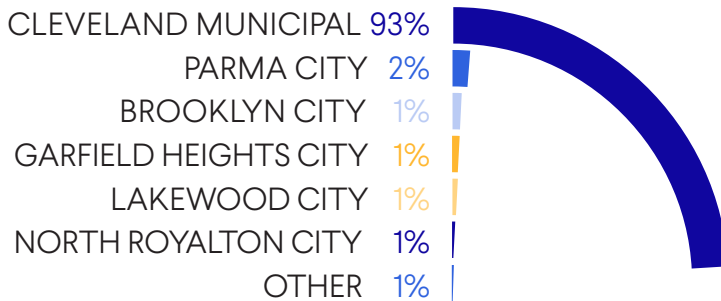
AVERAGE DAILY ENROLLMENT

89%

AVERAGE DAILY ATTENDANCE



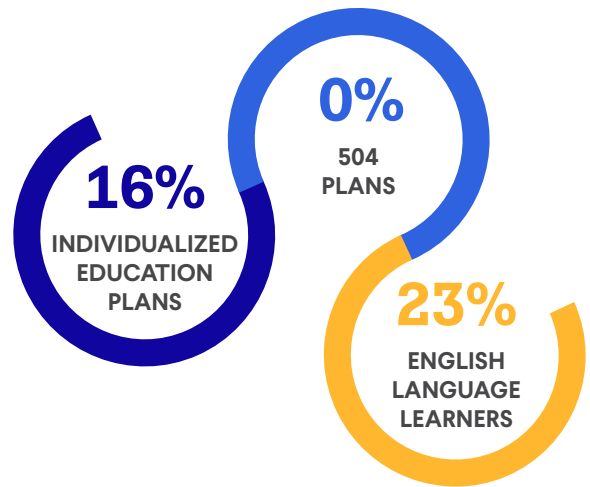
DISTRICTS OF RESIDENCE



INSTRUCTIONAL & SUPPORT STAFF



SPECIAL POPULATIONS



100% ECONOMICALLY DISADVANTAGED

16% STUDENT MOBILITY RATE

3% UNHOUSED

HIGHLIGHTS

- Provided over 1073 instruction hours, 17% more than the Ohio requirement for charter schools
- Rated 3 Stars in Progress for meeting state standards
- 92% of third graders met the requirements for promotion to fourth grade
- Honored teachers and students with monthly recognition program
- Hosted Nexlore Summer School Robotics STEM program
- Accredited by Cognia™

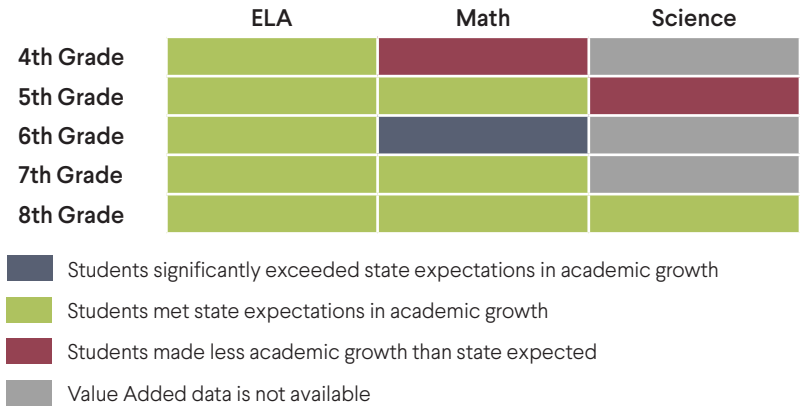
STATE REPORT CARD

PERFORMANCE INDEX SCORE 44.5	OVERALL RATING ★★
ACHIEVEMENT COMPONENT ★	EARLY LITERACY COMPONENT ★
PROGRESS COMPONENT ★★★	EARLY LITERACY COMPONENT 47.7%
GAP CLOSING COMPONENT ★	PROMOTION TO GRADE 4 92.3%

YOY PERFORMANCE INDEX SCORE



PROGRESS COMPONENT RATINGS BY SUBJECT & GRADE LEVEL



Constellation Schools: Madison Community met the following 11.6 goals set by Educational Service Center of Lake Erie West:

- Promotion component. 80% or more of students will be promoted to 4th grade: Met 92.3% of students were promoted to 4th grade.
- The percentage of students scoring at or above grade level in reading will increase by one grade level equivalency: Met 53% of students grew one grade level equivalency or more in Reading.
- The percentage of students scoring at or above grade level in Math will increase by one grade level equivalency: Met 53% of students grew one grade level equivalency or more in Reading. 54% of students grew one grade level equivalency or more in Math.
- The subgroup- Lowest 25% in academic performance will increase at least 2 standard errors of measure above the mean score: Met: 68% increased in ELA
- The school will show an overall decrease in out of school suspension from the previous year: Met 44% decrease from the prior year
- Increased academic performance from one star: Met Progress Component 3 stars.

MADISON COMMUNITY ELEMENTARY'S 2023-24 ACADEMIC GOALS USING THE I-READY ASSESSMENT:

GOAL	OUTCOME
Promotion component. 80% or more of students will be promoted to 4th grade	Met: 92.3% of students were promoted to 4th grade
The percentage of students scoring at or above grade level in reading will increase by one grade level equivalency	Met: 53% of students grew one grade level equivalency or more in Reading
The percentage of students scoring at or above grade level in Math will increase by one grade level equivalency	54% of students grew one grade level equivalency or more in Math
The subgroup- Lowest 25% in academic performance will increase at least 2 standard errors of measure above the mean score	Met: 68% increase in ELA
The school will show an overall decrease in out of school suspension from the previous year	Met: 44% decrease from the prior year
Increased academic performance from one star	Met: Progress Component 3 stars



Constellation Schools Madison Community

CHARLES LEDGER
SCHOOL BOARD PRESIDENT

BOGUSIA CHMIELEWSKI
BOARD VICE PRESIDENT

DONNA STELTER
BOARD SECRETARY

THOMAS BONNER
RODNEY SPENCER
BOARD MEMBERS

DAVE MASSA
TREASURER



AUTHORIZED BY

The Educational Service Center of Lake Erie West (ESCLEW) served as a sponsor for Constellation Schools: Madison Community Elementary during the 2023-2024 school year. ESCLEW monitored the school's academic and fiscal performance, as well as organization and operation of the school, and determined that the school was overall compliant with all laws and rules.



FINANCIAL DATA

State Sources	2,432,425.10
Federal Sources	2,258,048.66
Local Sources	235,165.27
TOTAL REVENUES	\$4,925,639.03

Salaries & Wages	251,902.33
Employee Benefits	147,556.14
Purchased Services	3,075,753.73
Supplies & Materials	89,760.62
Capital Outlay	0
Other Expenses	270,484.94
TOTAL EXPENSES	\$3,835,457.76

At time of publication, 2024 fiscal year data was not available from the Ohio Auditor of State. For updated information visit: www.auditor.state.oh.us

