



Serving the community for over 25 years, Constellation Schools: Old Brooklyn Community Elementary provides students with a well rounded educational program with small class sizes to allow for individualized instruction.

The award-winning elementary school partners with parents and community organizations to support and extend learning beyond the classroom. The school sets high standards for both academics and behavior with character education and school citizenship programs. Students benefit from numerous special activities, field trips, competitions, and clubs. Additionally, the school offers tutoring and afterschool care.

### **MISSION STATEMENT**

To provide every child an opportunity to obtain an excellent education built on a foundation of character education for life long success.



**GRADES SERVED**

**Early K - 4**

**STUDENTS SERVED**

**332**

**PRINCIPAL &  
EXECUTIVE PRINCIPAL**

**Cherie Kaiser**

**REGIONAL VICE PRESIDENT**

**Sarah O'Bryan**

**SCHOOL YEAR OPENED**

**1998-99**

**MANAGED BY ACCEL**

**2021-22**

**AUTHORIZER**

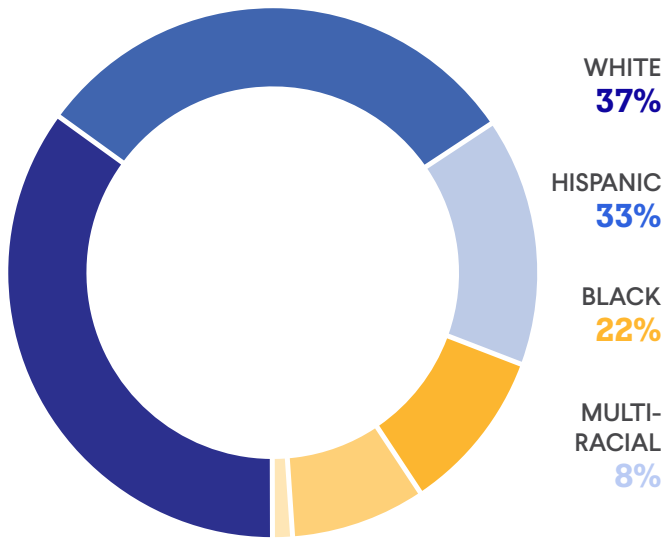
**Educational Service**

**Center of Lake Erie West**



**2023-24**  
**ANNUAL REPORT**

## STUDENT DEMOGRAPHICS



**305**

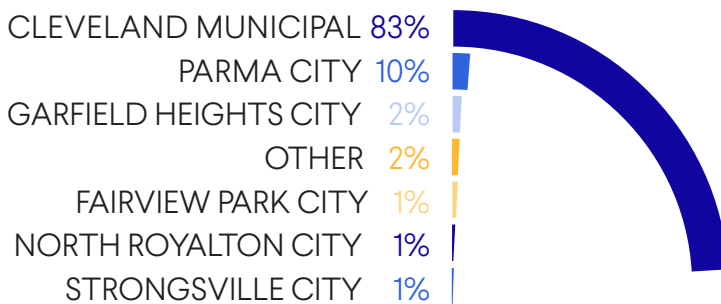
AVERAGE DAILY ENROLLMENT

**90%**

AVERAGE DAILY ATTENDANCE



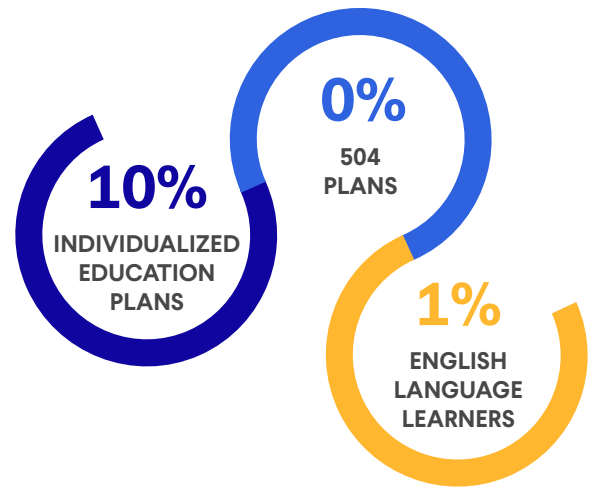
## DISTRICTS OF RESIDENCE



## INSTRUCTIONAL & SUPPORT STAFF



## SPECIAL POPULATIONS



**100% ECONOMICALLY DISADVANTAGED**

**14% STUDENT MOBILITY RATE**

**0% UNHOUSED**

## HIGHLIGHTS

- Provided over 1080 instruction hours, 17% more than the Ohio requirement for charter schools
- 100% of third graders met the requirements for promotion to fourth grade
- Received ACCEL Schools award for Outstanding Enrollment
- Decreased chronic absenteeism and met the attendance indicator
- Partnered with Disney Musicals in Schools & Cleveland Playhouse for Finding Nemo, Junior production
- Offering Wonders literacy program for the 2024-25 school year with research-based print and digital resources for building a strong literacy foundation
- Accredited by Cognia™

## STATE REPORT CARD

PERFORMANCE INDEX SCORE <b>58.3</b>	OVERALL RATING <b>★★</b>
ACHIEVEMENT COMPONENT <b>★★</b>	EARLY LITERACY COMPONENT <b>★</b>
PROGRESS COMPONENT <b>★★</b>	EARLY LITERACY COMPONENT <b>50.8%</b>
GAP CLOSING COMPONENT <b>★★</b>	PROMOTION TO GRADE 4 <b>100%</b>



## MET STANDARD

- Chronic Absenteeism
- PBIS implemented
- 49% at or above grade level on schools' locally administered norm-referenced assessment in ELA
- Met standard 50-79% for growing 1.0 or more grade equivalency from the beginning of the year to end of year in math
- School meets all debt requirements and is not delinquent on payments
- 100% of Board members attended at least on school visit or school-sponsored event
- Six meetings held per year
- 5 or more sponsor-approved board members for all meetings
- Timely Public notice for all meetings
- Completion of Open Meetings and Public Records for 100% of Board Members
- Overall member attendance is between 80%-90%
- School is compliant for 94%-99% of ORC/OAC required items-on time submission
- November and May forecasts approved and submitted on time
- School Annual report submitted and made available to parents by due date
- Emergency management plan approved and current
- 0 out of school suspension for K-3 students
- OSS is decreased from the previous school year

## APPROACHING STANDARD

- Overall Rating
- Achievement Component on Report Card
- Performance Index
- Progress Component on Report Card
- Approaching the standard in reading Growth for I ready 49% grew 1. Or more in grade equivalency
- Sponsor financial reporting between three to four reports submitted no more than 5 days late

## EXCEEDS STANDARD

- Promotion to fourth grade greater than 78%
- PI Index exceeds the PI of two area similar schools
- Current Ratio of Assets to Liabilities is greater than or equal to 1:1
- School has 60 days cash available
- Schools most recent audit contains zero findings and management letter comments
- Final FTE in greater than 95% of beginning FTE
- The % of eligible students remaining enrolled from one year to the next is at least 90%
- School is 100% compliant of ORC/OAC Accuracy of submission
- School shows evidence of exceeding mission-specific goal of: By the end of the current academic year, OBCE will implement character education programs in all grade levels, resulting in an increase in students demonstrating improved character traits and ethical behavior as assessed through a 5% decline in Swiss referrals from the previous school year. This will contribute to our mission of providing every child with an excellent education and fostering lifelong success.

## BELOW STANDARD

- Early Literacy Component
- Proficiency in third-grade reading less than 58%
- Improving K-3 Literacy Less than 58%
- Less than 30% at or above grade level on locally administered norm-referenced assessments in Math



**Constellation Schools**  
Old Brooklyn Community Elementary

**JOHN NOGA**  
SCHOOL BOARD PRESIDENT

**JERRY BEDNAR**  
VICE PRESIDENT

**BERT BUTTS**  
SECRETARY

**LEO TISCHER**  
**MICHELE NORMAN**  
BOARD MEMBERS

**DAVE MASSA**  
TREASURER



**AUTHORIZED BY**

The Educational Service Center of Lake Erie West (ESCLEW) served as a sponsor for Constellation Schools: Old Brooklyn Community Elementary during the 2023-2024 school year. ESCLEW monitored the school’s academic and fiscal performance, as well as organization and operation of the school, and determined that the school was overall compliant with all laws and rules.



**FINANCIAL DATA**

State Sources	3,683,722.48
Federal Sources	996,589.76
Local Sources	563,221.27
<b>TOTAL REVENUES</b>	<b>\$5,243,533.51</b>

Salaries & Wages	1,244,323.36
Employee Benefits	377,103.23
Purchased Services	1,925,288.27
Supplies & Materials	124,525.96
Capital Outlay	0
Other Expenses	616,491.44
<b>TOTAL EXPENSES</b>	<b>\$4,287,732.26</b>

*At time of publication, 2024 fiscal year data was not available from the Ohio Auditor of State. For updated information visit: [www.auditor.state.oh.us](http://www.auditor.state.oh.us)*

