



Constellation Schools: Parma Community scores in top 20% of Ohio charter schools and provides a well-rounded educational program with small class sizes to allow for individualized instruction.

The award-winning K-12 school partners with parents and community organizations to support and extend learning beyond the classroom. The

school sets high standards for both academics and behavior with character education and school citizenship programs. Specialty teachers provide regular instruction in PE, Art, and Performing Arts. Students benefit from numerous special activities, field trips, competitions, and extracurriculars including clubs and sports. Additionally, the school supports students and their families with tutoring and afterschool care.

MISSION STATEMENT

To provide every child an opportunity to obtain an excellent education built on a foundation of character education for life long success.

GRADES SERVED

K - 12

STUDENTS SERVED

1272

SCHOOL LEADERSHIP

- Ciara Gaspar** (Day Drive)
- Martin Beckman** (Pearl Road)
- David Kassel** (Intermediate)
- Tina Scott** (7-8)
- Eric Butler** (9-10)
- Todd Luceke** (11-12)

EXECUTIVE PRINCIPAL

Bob Klinar

REGIONAL VICE PRESIDENT

Sarah O'Bryan

SCHOOL YEAR OPENED

2000-01

MANAGED BY ACCEL

2021-22

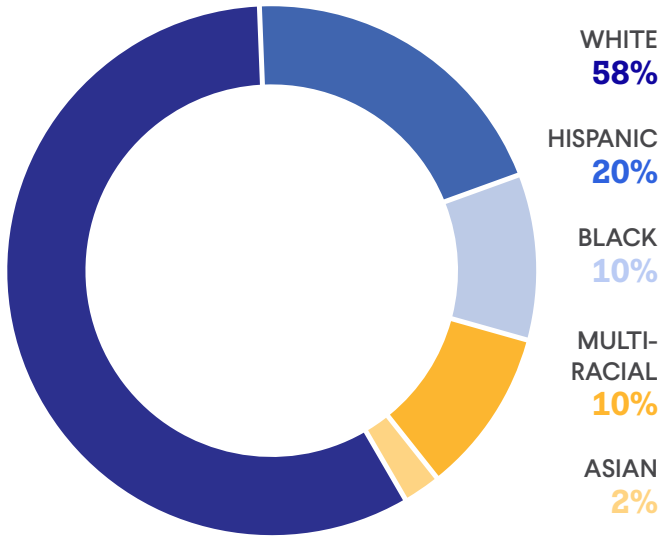
AUTHORIZER

**Educational Service
Center of Lake Erie West**



**2023-24
ANNUAL REPORT**

STUDENT DEMOGRAPHICS

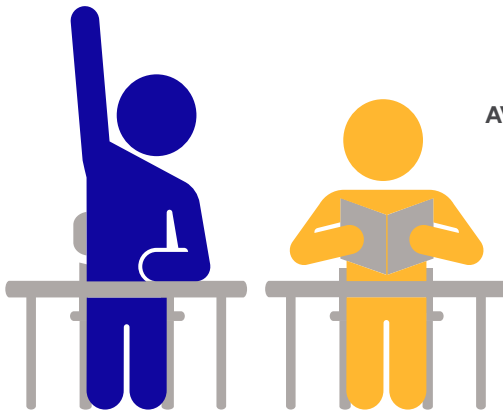


1127

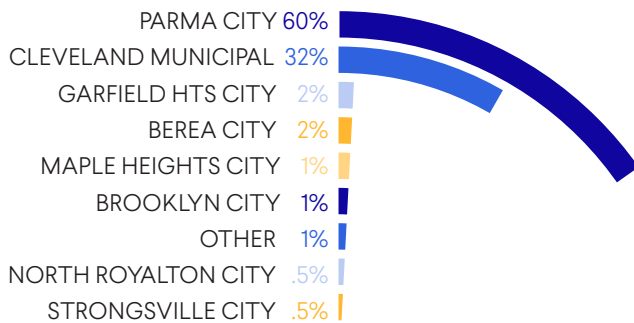
AVERAGE DAILY ENROLLMENT

91%

AVERAGE DAILY ATTENDANCE



DISTRICTS OF RESIDENCE

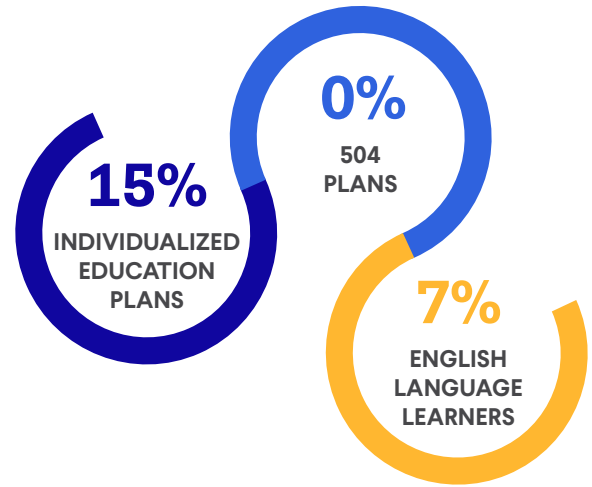


INSTRUCTIONAL & SUPPORT STAFF

AVERAGE CLASS SIZE 23

STUDENT TO STAFF RATIO 11:1

SPECIAL POPULATIONS



68% ECONOMICALLY DISADVANTAGED

13% STUDENT MOBILITY RATE

0% UNHOUSED

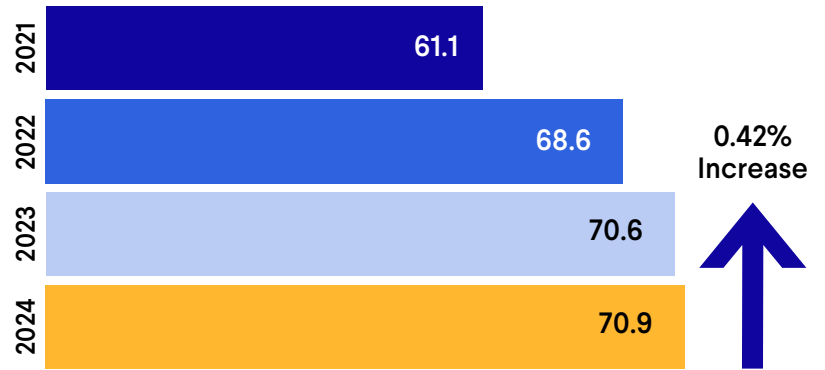
HIGHLIGHTS

- Provided over 1086 instruction hours, 18% more than the Ohio requirement for charter schools
- Rated 3 Stars Overall for meeting state student growth expectations
- Rated 4 Stars in Progress for exceeding state standards
- 100% of third graders met the requirements for promotion to fourth grade
- Recognized by ACCEL Schools as Gold School for strong enrollment & academic excellence; Outstanding Teacher Retention
- Campus improvements include new bicycle racks; new weapons detection system (grant funded)
- Middle School extracurriculars: Volleyball, Basketball (2023-2024 Champions), Game Club, Student Council, Junior NHS & more (35% participation)
- High School extracurriculars: Basketball, Art, Game Club, Drama, Student Council, National Honor Society, Creative Writing & more (30% participation)
- Hosted Summer Algebra I Bootcamp (28 students participated) & Middle School Summer ELA/Math program (45 students participated)
- Graduated 71 seniors—4 seniors earned Academic Honors Diploma; 2 graduates completed their Associate Degree
- Offered High School CTE programming (Automotive Service Technology, Auto Collision, Cosmetology, Culinary Arts, Digital Media & Creative Arts, Technology) 13 graduates participated in 2-year program
- Accredited by Cognia™

STATE REPORT CARD

PERFORMANCE INDEX SCORE 70.9	OVERALL RATING ★★★
ACHIEVEMENT COMPONENT ★★	EARLY LITERACY COMPONENT ★★
PROGRESS COMPONENT ★★★★★	EARLY LITERACY COMPONENT 64.5%
GAP CLOSING COMPONENT ★★	PROMOTION TO GRADE 4 100%

YOY PERFORMANCE INDEX SCORE



PROGRESS COMPONENT RATINGS BY SUBJECT & GRADE LEVEL

	ELA	Math	Science
4th Grade	Green	Yellow	Grey
5th Grade	Light Blue	Dark Blue	Dark Blue
6th Grade	Red	Dark Blue	Grey
7th Grade	Green	Green	Grey
8th Grade	Green	Green	Green

- Dark Blue: Students significantly exceeded state expectations in academic growth
- Light Blue: Students exceeded state expectations in academic growth
- Green: Students met state expectations in academic growth
- Yellow: Students made less academic growth than state expected
- Red: Students made significantly less academic growth than state expected
- Grey: Value Added data is not available



Constellation Schools: Parma Community met the following 11.6 goals set by Educational Service Center of Lake Erie West:

- Mission, Parent Satisfaction, Governing Board Performance, Financial Performance
- Achievement: Performance Index
- Graduation Rate: 4-Year Graduation Rate, 5-Year Graduation Rate
- Early Literacy: Early Literacy Component
- Comparative Schools Data: Similar School #1
- Other Academics Measures: Subgroup, Reading, Math, Improving K-3 Literacy
- Student Discipline: Grades 4-12
- Organizational & Operational: Exceeds- On-Time Rate, Accuracy Percentages

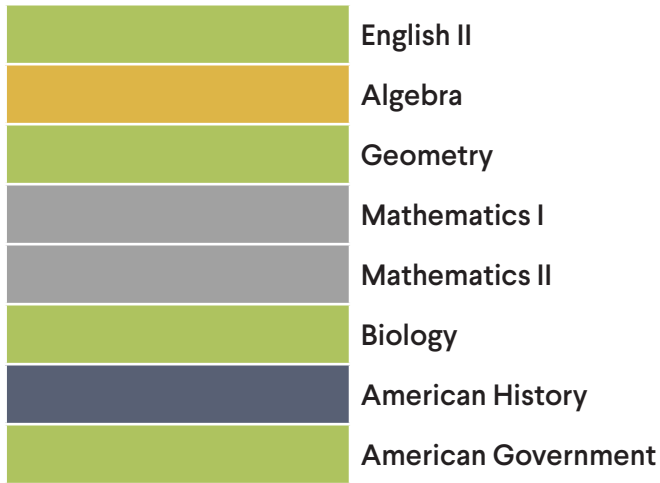
PARMA COMMUNITY

CLASS OF 2024



97% of Constellation School's Class of 2024 graduated on-time and gained acceptance to over 13 colleges & universities.

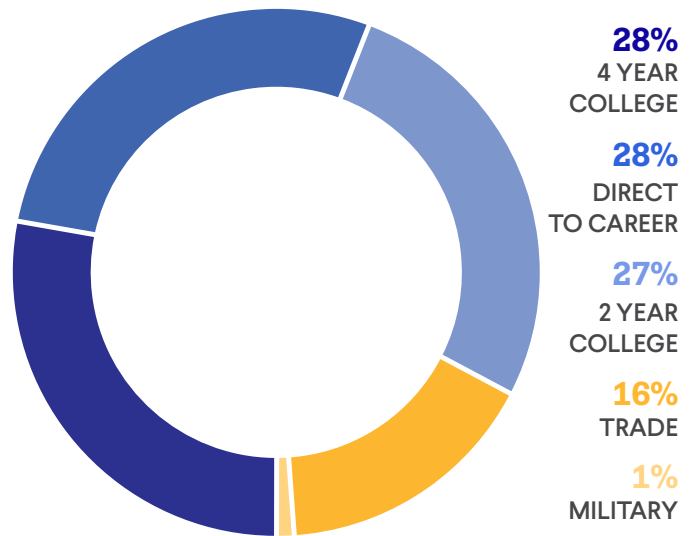
HIGH SCHOOL PROGRESS COMPONENT RATINGS BY SUBJECT



- Students significantly exceeded state expectations in academic growth
- Students met state expectations in academic growth
- Students made less academic growth than state expected
- Value Added data is not available

NUMBER OF SENIORS 73	GRADUATION RATE 97%
GRADUATION COMPONENT ★★	COLLEGE, CAREER, WORKFORCE & MILITARY READINESS COMPONENT 0.385

POST GRADUATION PLANS



PARMA SENIORS WERE ACCEPTED INTO THE FOLLOWING COLLEGES & UNIVERSITIES:

Cuyahoga Community College District
University of Akron Main Campus
St Petersburg College
Lake Superior State University
Cleveland State University
Cleveland Institute of Art
Baldwin Wallace University

Kent State University at Kent
Bowling Green State University-Main Campus
Abilene Christian University
Tri-County Community College
Lorain County Community College
Fairleigh Dickinson University-Metropolitan Campus





Constellation Schools Parma Community

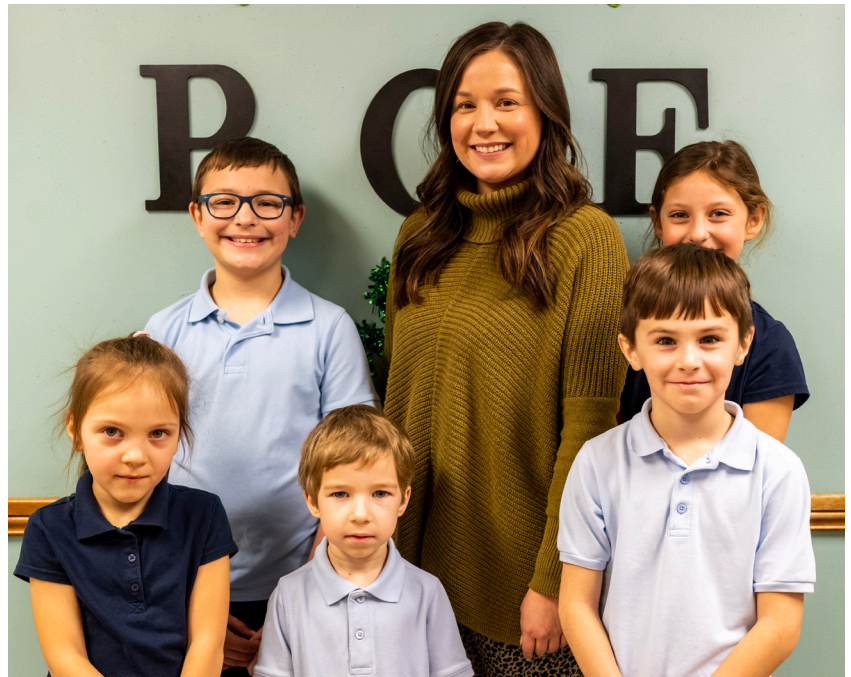
JOHN NOGA
SCHOOL BOARD PRESIDENT

JERRY BEDNAR
VICE PRESIDENT

BERT BUTTS
SECRETARY

MICHELE NORMAN
LEO TISCHER
BOARD MEMBERS

DAVE MASSA
TREASURER



AUTHORIZED BY

The Educational Service Center of Lake Erie West (ESCLEW) served as a sponsor for Constellation Schools: Parma Community during the 2023-2024 school year. ESCLEW monitored the school's academic and fiscal performance, as well as organization and operation of the school, and determined that the school was overall compliant with all laws and rules.



FINANCIAL DATA

State Sources	13,165,365.99
Federal Sources	1,233,321.61
Local Sources	383,694.73
TOTAL REVENUES	\$14,782,382.33

Salaries & Wages	5,938,890.16
Employee Benefits	1,703,889.00
Purchased Services	4,631,218.32
Supplies & Materials	663,336.74
Capital Outlay	58,873.92
Other Expenses	887,967.20
TOTAL EXPENSES	\$13,884,175.34

At time of publication, 2024 fiscal year data was not available from the Ohio Auditor of State. For updated information visit:
www.auditor.state.oh.us

