



Serving students and families since 2006, Constellation Schools: Westpark Community School offers a well-rounded curriculum enriched with regular instruction in technology, the arts, physical education, health, and character education.

The school culture promotes high expectations for both academics

and behavior with programs to support social and emotional growth. Students experience small class sizes and have a range of sports, clubs, and extracurricular activities including Game Club, Art Club, Ukulele Club, Yearbook, Student Council and more. Students attend field trips each year to various educational venues including an annual eighth grade trip to Washington, DC. Additionally, families benefit from after-school care and free tutoring.

The award-winning school partners with parents and community organizations to support and extend learning beyond the classroom.

### MISSION STATEMENT

To provide every child an opportunity to obtain an excellent education built on a foundation of character education for life long success.



GRADES SERVED

5-8

STUDENTS SERVED

143

PRINCIPAL &  
EXECUTIVE PRINCIPAL

**Deborah Rotolo**

REGIONAL VICE PRESIDENT

**Sarah O'Bryan**

SCHOOL YEAR OPENED

2006-07

MANAGED BY ACCEL

2021-22

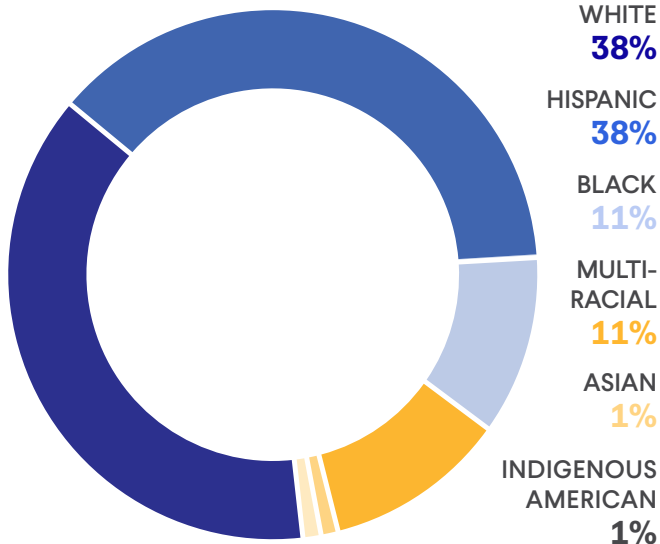
AUTHORIZER

**Buckeye Community  
Hope Foundation**



**2023-24**  
ANNUAL REPORT

## STUDENT DEMOGRAPHICS



**128**

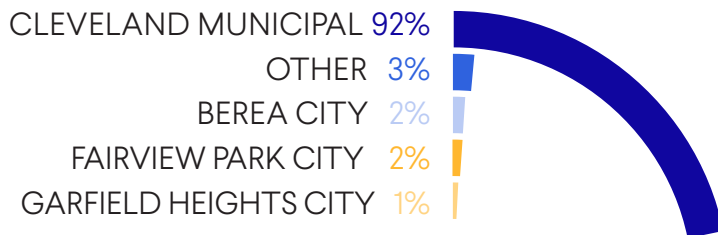
AVERAGE DAILY ENROLLMENT



**90%**

AVERAGE DAILY ATTENDANCE

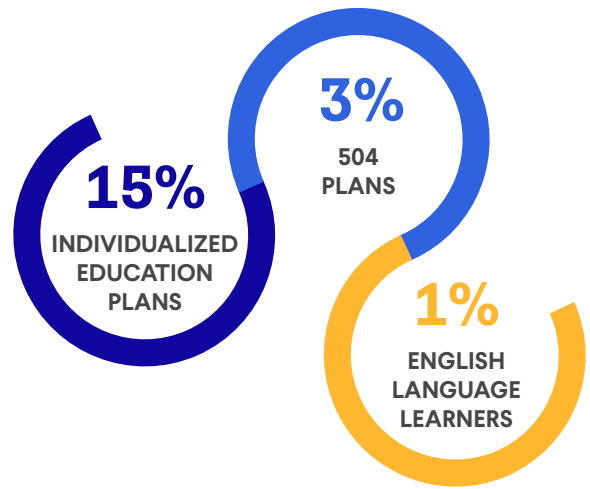
## DISTRICTS OF RESIDENCE



## INSTRUCTIONAL & SUPPORT STAFF



## SPECIAL POPULATIONS



**31% ECONOMICALLY DISADVANTAGED**

**17% STUDENT MOBILITY RATE**

**1% UNHOUSED**

## HIGHLIGHTS

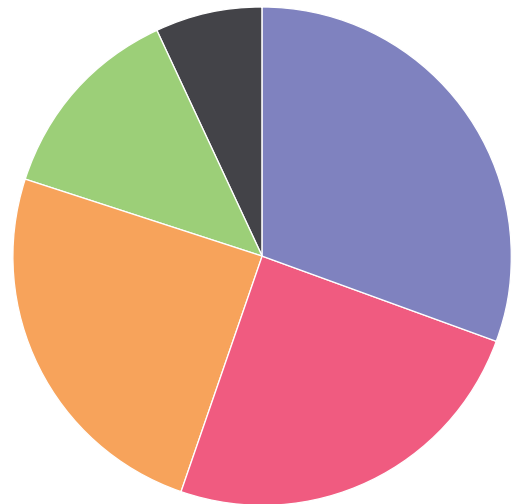
- Rated in the Top 20% of Ohio Charter Schools
- Recognized by ACCEL Schools as Gold School for strong enrollment & academic excellence
- Received ACCEL Schools awards for Highest Score in ELA & Math
- Campus improvements include parking lot resurfacing, playground resurfacing, new PA system, security updates including new security vestibule & panic alert system
- Hosted Horizon Aftercare program; 25 students participated
- Accredited by Cognia™

## STATE REPORT CARD

PERFORMANCE INDEX SCORE <b>70.9</b>	OVERALL RATING ★★★☆
ACHIEVEMENT COMPONENT ★★★	PROGRESS COMPONENT ★★★
GAP CLOSING COMPONENT ★★★	

## ACHIEVEMENT BY PERFORMANCE LEVEL

LIMITED  
**31%**  
 BASIC  
**25%**  
 PROFICIENT  
**25%**  
 ACCOMPLISHED  
**13%**  
 ADVANCED  
**7%**



## PROGRESS COMPONENT RATINGS BY SUBJECT & GRADE LEVEL

	ELA	Math	Science
5th Grade	Students made less academic growth than state expected	Students made less academic growth than state expected	Students made less academic growth than state expected
6th Grade	Students met state expectations in academic growth	Value Added data is not available	Value Added data is not available
7th Grade	Students significantly exceeded state expectations in academic growth	Students significantly exceeded state expectations in academic growth	Value Added data is not available
8th Grade	Students met state expectations in academic growth	Students met state expectations in academic growth	Students met state expectations in academic growth

Students significantly exceeded state expectations in academic growth  
 Students met state expectations in academic growth  
 Students made less academic growth than state expected  
 Value Added data is not available





**Constellation Schools**  
Westpark Community Middle

**JAMES TORTELLI**  
SCHOOL BOARD PRESIDENT

**GREG KOZARIK**  
VICE PRESIDENT

**DEBORAH CALLEN**  
SECRETARY

**DAVE MASSA**  
TREASURER

**LAURENE PERKINS**  
**JOSEPH SGRO**  
BOARD MEMBERS



**AUTHORIZED BY**

Buckeye Community Hope Foundation (BCHF) relies on multiple sources of data to evaluate the community school’s performance including academic performance on national normed tests and academic scores published by the Department of Education & Workforce on the Local Report Card. In addition, BCHF conducts multiple onsite visits to the school throughout the year to ensure compliance with all Rule and Law, as well as the sponsorship contract. Performance results for the school will be available for the 2023-2024 school year on the BCHF website ([www.bchf.org](http://www.bchf.org)) after November 30.



**FINANCIAL DATA**

State Sources	1,749,167.16
Federal Sources	977,113.79
Local Sources	155,193.08
<b>TOTAL REVENUES</b>	<b>\$2,881,474.03</b>

Salaries & Wages	581,990.27
Employee Benefits	181,548.54
Purchased Services	1,637,589.63
Supplies & Materials	74,047.86
Capital Outlay	21,381.21
Other Expenses	47,063.34
<b>TOTAL EXPENSES</b>	<b>\$2,543,620.85</b>

*At time of publication, 2024 fiscal year data was not available from the Ohio Auditor of State. For updated information visit: [www.auditor.state.oh.us](http://www.auditor.state.oh.us)*

