



Serving students and families since 2001, Constellation Schools: Westpark Community Elementary is one of the top-performing schools in Cleveland. The school offers a well-rounded curriculum enriched with regular instruction in technology, the arts, physical education, health, and character education.

The school culture promotes high expectations for both academics and behavior with programs to support social and emotional growth. Students experience small class sizes and have a range of sports, clubs, and extracurricular activities. Students attend field trips each year to various educational venues such as the Natural History Museum, Cleveland Art Museum, Cleveland Metroparks Zoo, Swings & Things, and Playhouse Square. Additionally, families benefit from before and afterschool care and free tutoring. The award-winning school partners with parents and community organizations to support and extend learning beyond the classroom.

MISSION STATEMENT

To provide every child an opportunity to obtain an excellent education built on a foundation of character education for life long success.



GRADES SERVED

K - 4

STUDENTS SERVED

232

PRINCIPAL

Jean Rizi

EXECUTIVE PRINCIPAL

Deborah Rotolo

REGIONAL VICE PRESIDENT

Sarah O'Bryan

SCHOOL YEAR OPENED

2001-02

MANAGED BY ACCEL

2021-22

AUTHORIZER

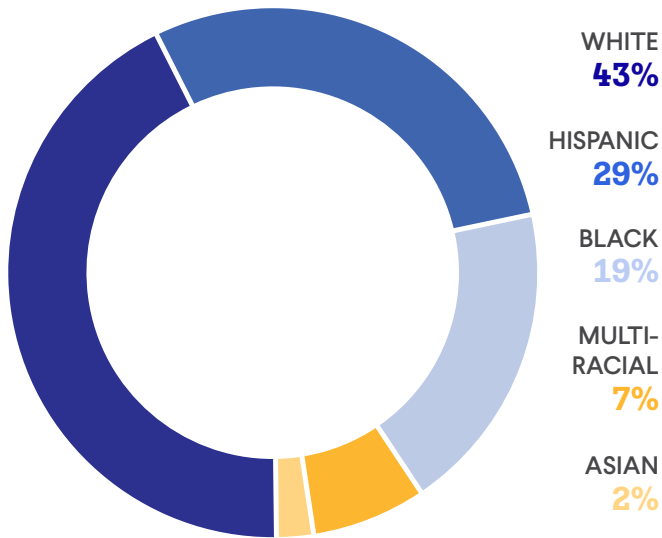
Educational Service

Center of Lake Erie West



2023-24
ANNUAL REPORT

STUDENT DEMOGRAPHICS



213

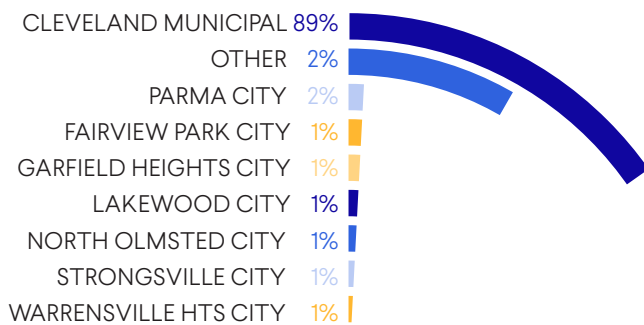
AVERAGE DAILY ENROLLMENT

91%

AVERAGE DAILY ATTENDANCE



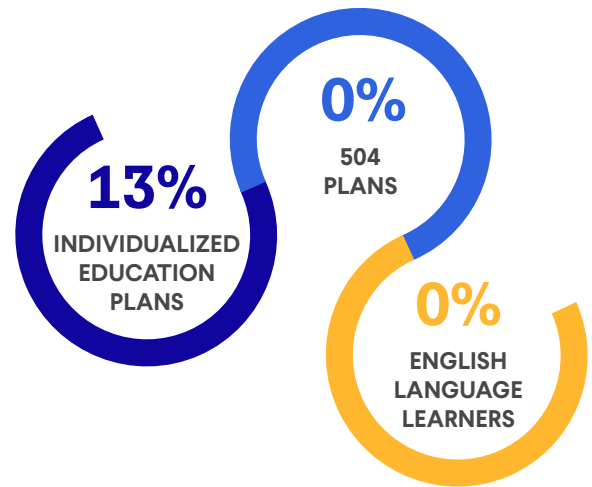
DISTRICTS OF RESIDENCE



INSTRUCTIONAL & SUPPORT STAFF



SPECIAL POPULATIONS



100% ECONOMICALLY DISADVANTAGED

11% STUDENT MOBILITY RATE

0% UNHOUSED

HIGHLIGHTS

- Rated in the Top 3% of Ohio Charter Schools
- Provided over 1080 instruction hours, 17% more than the Ohio requirement for charter schools
- Rated 4.5 Stars Overall for exceeding state student growth expectations
- Rated 4 Stars in Achievement for exceeding state standards in academic achievement
- Rated 5 Stars in Progress for exceeding state standards on academic progress
- Rated 5 Stars in Gap Closing for exceeding state standards in closing educational gaps
- Recognized by ACCEL Schools as Gold School for strong enrollment & academic excellence
- Received ACCEL Schools awards for Highest Score in ELA & Math
- Accredited by Cognia™

STATE REPORT CARD

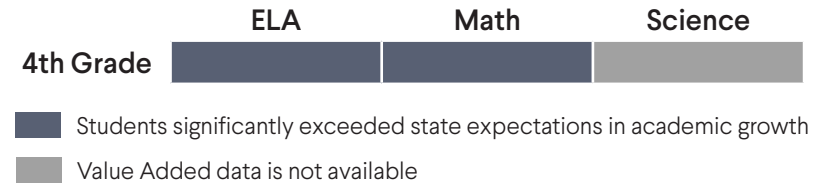
PERFORMANCE INDEX SCORE 88.8	OVERALL RATING ★★★★★
ACHIEVEMENT COMPONENT ★★★★★	EARLY LITERACY COMPONENT ★★
PROGRESS COMPONENT ★★★★★	EARLY LITERACY COMPONENT 66.5%
GAP CLOSING COMPONENT ★★★★★	PROMOTION TO GRADE 4 100%



YOY PERFORMANCE INDEX SCORE



PROGRESS COMPONENT RATINGS BY SUBJECT & GRADE LEVEL



Constellation Schools: Westpark Community Elementary met the following 11.6 goals set by Educational Service Center of Lake Erie West:

- 2023-2024 School Academic Performance on the Traditional Ohio School Report Card: Overall Rating, Achievement Component, Performance Index, Progress Component, Gap Closing, Chronic Absenteeism, Promotion to 4th Grade
- Achievement: Reading, Math
- Growth: Math, Subgroup on Reading
- School Fiscal Performance, School Governance, and Legal Compliance

WESTPARK COMMUNITY ELEMENTARY'S 2023-24 ACADEMIC GOALS USING THE I-READY ASSESSMENT:

GOAL	OUTCOME
Promotion component. 80% of more of students will be promoted to 4th grade	Met: 100% of students promoted to 4th grade
Achievement. 50% of students scoring at or above grade level on i-Ready Diagnostic Reading	Met: 52% of students scored at or above grade level on the i-Ready Diagnostic Reading at the end of the year.
Achievement. 41-49% of students scoring at or above grade level on i-Ready Diagnostic Math	Met: 43% of students scored at or above grade level on the i-Ready Diagnostic Reading at the end of the year.
Growth. Students who are Hispanic will grow 1.0 or more in grade equivalency from the beginning of the to end of the year on the i-Ready Diagnostic Reading	Met. 50% of students who are Hispanic grew 1.0 or more in grade equivalency from the beginning of the year to end of the year administration in on the i-Ready Diagnostic.
The school will show an overall decrease in out-of-school suspensions (OSS) from the previous school year.	Met: Out of school suspensions dropped from 4 in 2022-2023, to 0 school suspensions in 2023-2024
Increased Achievement rating performance on Ohio School Report Card	Met: Achievement rating performance increased from 3 stars to 4 stars.



Constellation Schools
Westpark Community Elementary

- CHARLES LEDGER**
SCHOOL BOARD PRESIDENT
- BOGUSIA CHMIELEWSKI**
VICE PRESIDENT
- DONNA STELTER**
SECRETARY
- THOMAS BONNER**
RODNEY SPENCER
BOARD MEMBERS
- DAVE MASSA**
TREASURER



AUTHORIZED BY

The Educational Service Center of Lake Erie West (ESCLEW) served as a sponsor for Constellation Schools: Westpark Community Elementary during the 2023-2024 school year. ESCLEW monitored the school’s academic and fiscal performance, as well as organization and operation of the school, and determined that the school was overall compliant with all laws and rules.



FINANCIAL DATA

State Sources	3,334,506.06
Federal Sources	910,121.14
Local Sources	478,830.26
TOTAL REVENUES	\$4,723,457.46

Salaries & Wages	1,077,527.92
Employee Benefits	394,946.32
Purchased Services	1,324,111.84
Supplies & Materials	95,882.23
Capital Outlay	0
Other Expenses	505,109.28
TOTAL EXPENSES	\$3,397,577.59

At time of publication, 2024 fiscal year data was not available from the Ohio Auditor of State. For updated information visit: www.auditor.state.oh.us

